

15

**U.S. PUBLIC LAND CORNER
MAINTENANCE**

Corner ID : E1/4, Sec. 6, T18N-R4W

21804062000

<u>DATE</u>	<u>CREW</u>	<u>MONUMENT TYPE</u> -----
March 22, 2017	Zachariah P. Dechant Gary L. Dechant	Existing Harrison, intact, 31' south of Dakota Ave 1' west of Hwy r/w sign

<u>References:</u>	<u>Bearing</u>	<u>Distance</u>
1) Set 3/4"x24" hex iron bar, down 6", 4' west of 8" Red Oak	S85E	29.60'
2) Set 3/4"x24" hex iron bar, down 6", 4' NW of 8" White Pine	S35E	26.37'
3) Set 3/4"x24" hex iron bar, down 6", 3' west of 14" Red Oak with wire south	S5W	28.23'
4) Set 3/4"x 24" hex iron bar, down 6", 4' NE of 14" White Pine	S72W	34.48'



I, Garold A. Sime, do hereby certify that on the 12th day of October 1994, I found ~~evidence~~ (no evidence) of the E 1/4 corner of Section 6, T 18 N, R 4W Fourth Principal Meridian, and I re-established said corner according to the Wisconsin Statutes as shown and described hereon.

Dated this 12th day of Oct. 1994.

Garold A. Sime
 Monroe County Surveyor
 Title

History of corner establishment since Original Government Survey

Holden was here in April, 1906 and April, 1908

**See Reverse Side
 For Maintenance**

Description of corner evidence found:

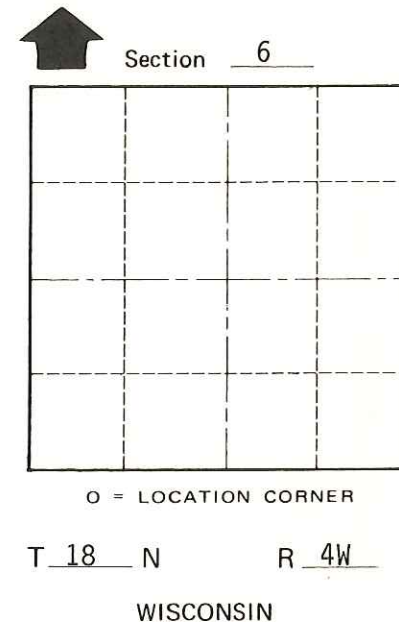
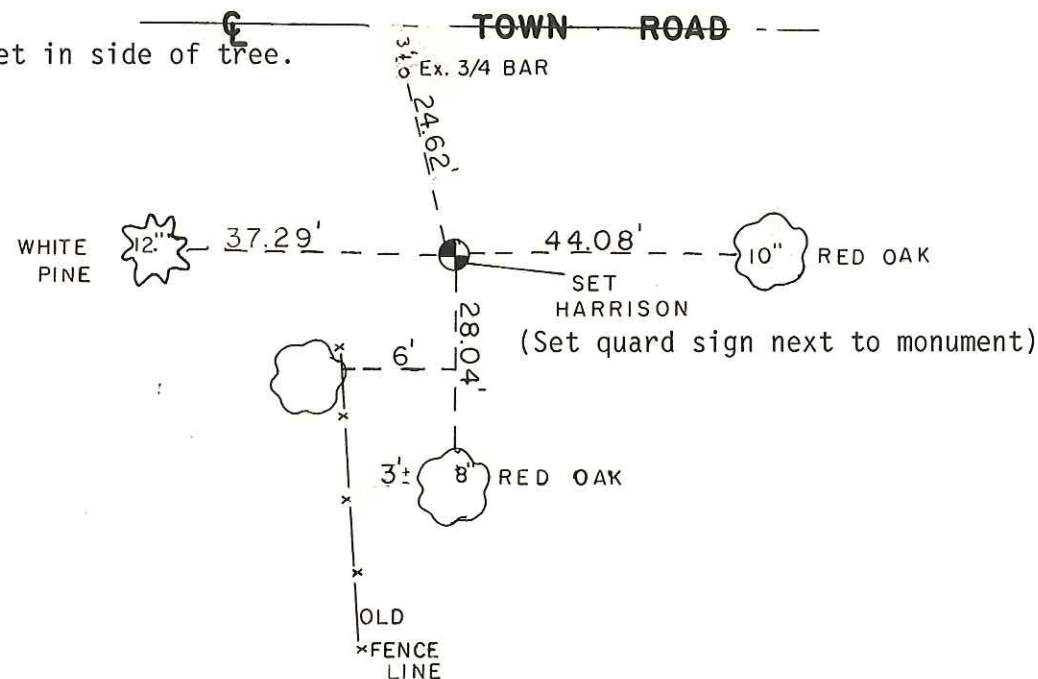
Set corner on line with NE corner of Section 6 & Northeast corner of SE 1/4-NE 1/4, as previously monumented, at the prorated distance from said Northeast corner of SE 1/4-NE 1/4 to the Southeast corner of Section 6

Description of corner and witness monuments, references and accessories used to perpetuate the original or re-established location of this corner:

Set Harrison Monument at corner. Trees are double blazed and distances shown are to a nail set in side of tree.

Witnesses to corner location:

Garold A. Sime, R.L.S.
Harold Haberlin



SURVEY CONTROL ORDER

Horizontal	_____
Vertical	_____

WISCONSIN COORDINATE SYSTEM

Corner	East (X)	North (Y)	Elevation (Z)	Zone
Control Sta. Name				

~~City, Village~~ or Town of Little Falls
 County of Monroe

COUNTY SURVEYOR FORM NO. 1