

CERTIFICATE

CERTIFIED LAND CORNER

No. 31

21804060000

I, Mark R. Heidecke, do hereby certify that on the 5th day of December 1979, I found ~~existence~~ (no evidence) of the Northwest corner of Section 8, T18 N, R 4 W Fourth Principal Meridian, and I re-established said corner according to the Wisconsin Statutes as shown and described hereon.

Dated this 9th day of January 1980.

Mark R. Heidecke

Registered Land Surveyor

Title

History of corner establishment since Original Government Survey

An iron bar was set at this corner by Fred Holden, County Surveyor, in the early 1900's.

Description of corner evidence found:

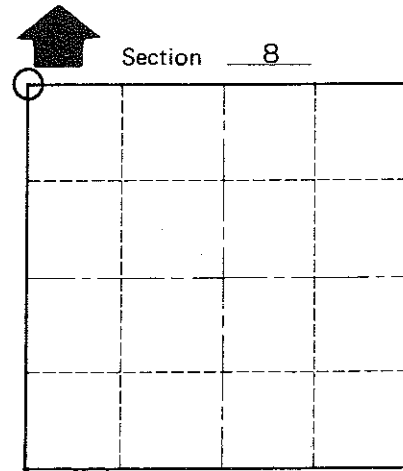
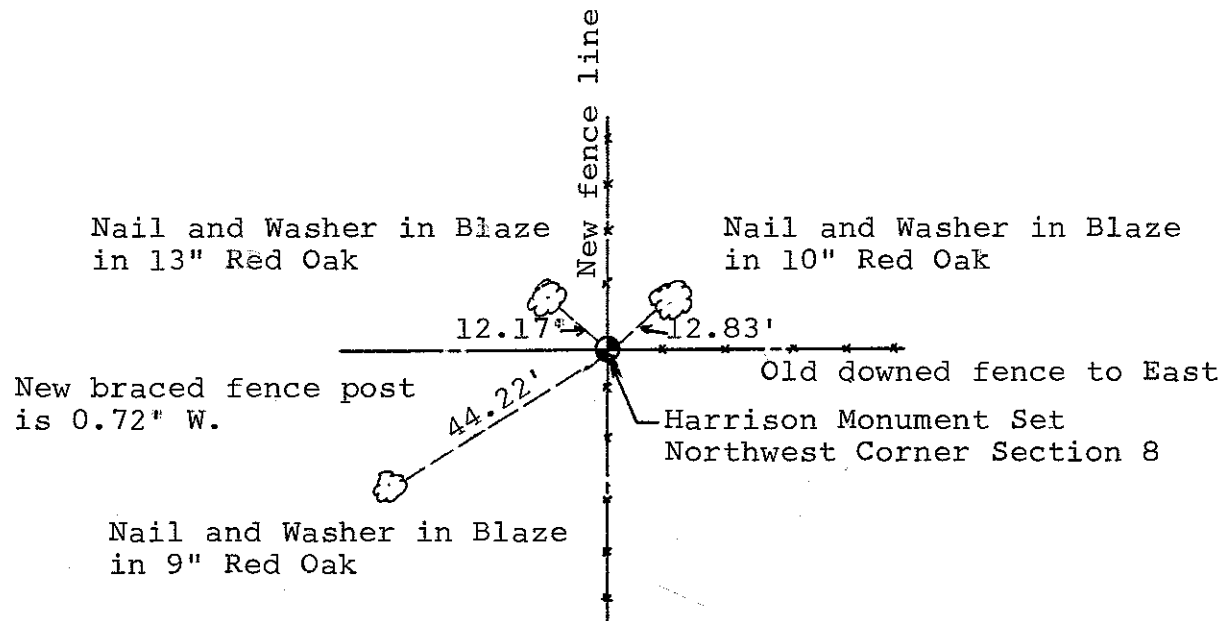
After a thorough search of the area, a Harrison Monument was set at this corner in the location of an old rotten fence corner post. This location is compatible with the interior occupation in Section 8.

Description of corner and witness monuments, references and accessories used to perpetuate the original or re-established location of this corner:

Witnesses to corner location:

Mark Heidecke

Lawrence Feddersen



O = LOCATION CORNER

T 18 N R 4 W

WISCONSIN

COUNTY SURVEYOR FORM NO. 1

SURVEY CONTROL ORDER

Horizontal	
Vertical	

WISCONSIN COORDINATE SYSTEM

Corner	East (X)	North (Y)	Elevation (Z)	Zone
Control Sta. Name				

~~City, Village or Town~~ of Little Falls

County of Monroe