

21804050020

I, Mark R. Heidecke, do hereby certify that on the 5th day of December 19 79, I found ~~(evidence)~~ (no evidence) of the North 1/4 corner of Section 8, T 18 N, R 4 W Fourth Principal Meridian, and I re-established said corner according to the Wisconsin Statutes as shown and described hereon.

Dated this 9th day of January 1980.

Mark R Heidecke

Registered Land Surveyor
Title

History of corner establishment since Original Government Survey

No subsequent history of monument perpetuation since the Original U.S. Government Survey in Monroe County.

Description of corner evidence found:

A Harrison monument was set at this corner in a North and South fence line and on a straight line between the Northwest and Northeast Section Corners of Section 8. This location is compatible with interior occupation in both Section 8 and Section 55.

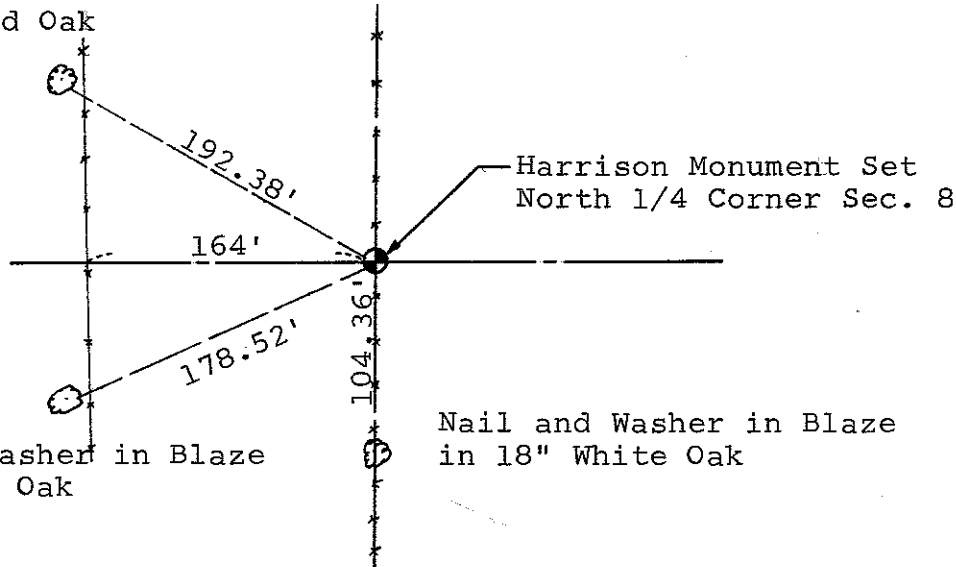
Description of corner and witness monuments, references and accessories used to perpetuate the original or re-established location of this corner:

Witnesses to corner location:

Mark R. Heidecke

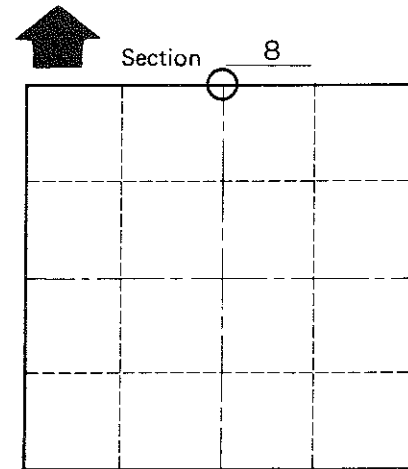
Lawrence Feddersen

Nail and Washer in Blaze in 7" Red Oak



Nail and Washer in Blaze in 12" Red Oak

Nail and Washer in Blaze in 18" White Oak



T 18 N R 4 W
WISCONSIN

COUNTY SURVEYOR FORM NO. 1

SURVEY CONTROL ORDER

Horizontal	_____
Vertical	_____

WISCONSIN COORDINATE SYSTEM

Corner	East (X)	North (Y)	Elevation (Z)	Zone
Control Sta. Name				

~~XXXXXX~~ Town of Little Falls
County of Monroe