

21804050000

I, Mark R. Heidecke, do hereby certify that on the 5th day of December 19 79, I found ~~evidence~~ (no evidence) of the Northeast corner of Section 8, T 18 N, R 4 W Fourth Principal Meridian, and I re-established said corner according to the Wisconsin Statutes as shown and described hereon.

Dated this 9th day of January 1980.

Mark R Heidecke

Registered Land Surveyor

Title

History of corner establishment since Original Government Survey
No subsequent history of monument perpetuation since the Original U.S. Government Survey in Monroe County.

Description of corner evidence found:

A Harrison monument was set at this corner in line of an old fence to the North and on a straight line between the East Quarter Corner of Section 8 and the East Quarter Corner of Section 5 and by doubling the distance North the distance between the East Quarter Corner of Section 8 and an old fence corner at the East 1/16 Corner of the Northeast Quarter of Section 8. This location is compatible with the occupation within Sections 5 and 8.

Description of corner and witness monuments, references and accessories used to perpetuate the original or re-established location of this corner:

Nail and Washer in Blaze in 10" White Oak

Nail and Washer in Blaze in 18" Hickory

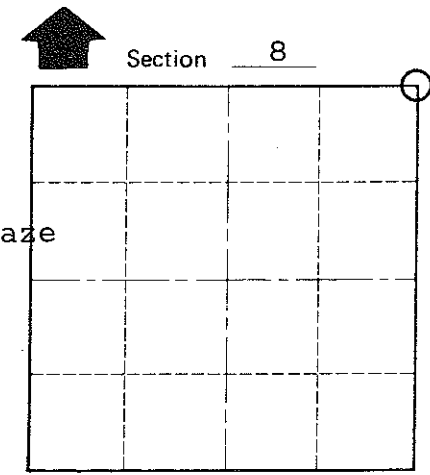
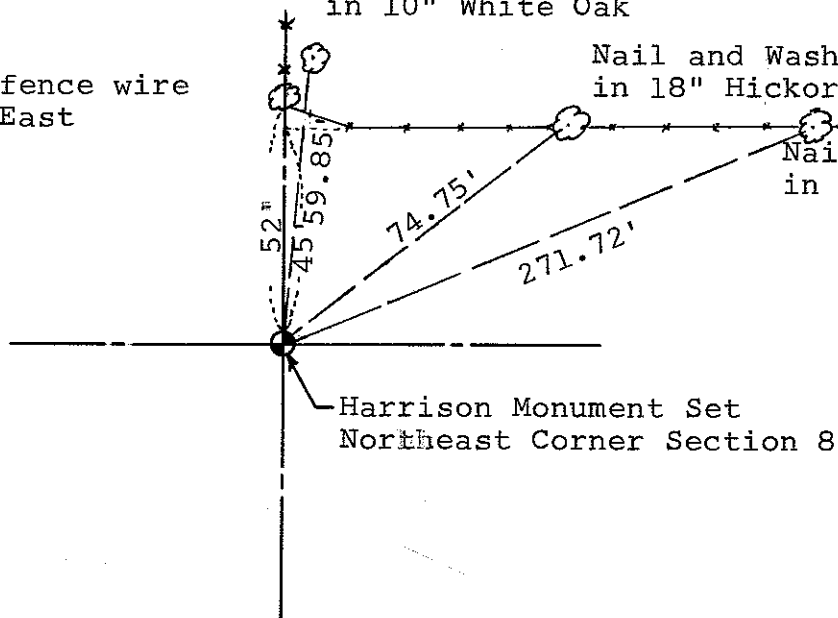
Nail and Washer in Blaze in 16" Red Oak

Old Oak with fence wire to North and East

Witnesses to corner location:

Mark Heidecke

Lawrence Feddersen



T 18 N R 4 W
WISCONSIN

COUNTY SURVEYOR FORM NO. 1

SURVEY CONTROL ORDER

Horizontal	_____
Vertical	_____

WISCONSIN COORDINATE SYSTEM

Corner	East (X)	North (Y)	Elevation (Z)	Zone
Control Sta. Name				

~~City of Little Falls~~ Town of Little Falls
County of Monroe