

21804042020

I, Garold A. Sime, do hereby certify that on the 24th day of March 1978, I found ~~(evidence)~~ (no evidence) of the Center 1/4 corner of Section 4, T 18 N, R 4 W, Fourth Principal Meridian, and I re-established said corner according to the Wisconsin Statutes as shown and described hereon.

History of original corner establishment:

No History of corner

Description of corner evidence found:

Set as per law

UPDATE

On March 28, 1989, Bryan Meyer and Brian Forsythe got additional ties for this corner due to road construction to be done on S.T.H. "27". The 1 1/4" iron bar was left in place. On August 11, 1989, Bryan Meyer and John Kenworthy measured off the ties and got a metal detector indication under new pavement. They set a railroad spike at the corner from the ties shown below. The railroad spike is believed to be directly over the 1 1/4" iron bar.

Dated this 13th day of April 1978.

Garold A. Sime

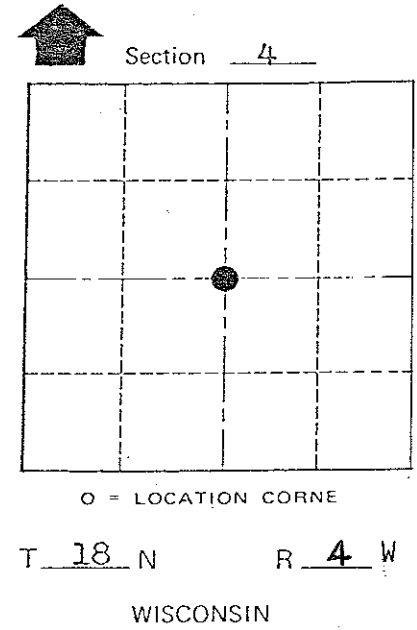
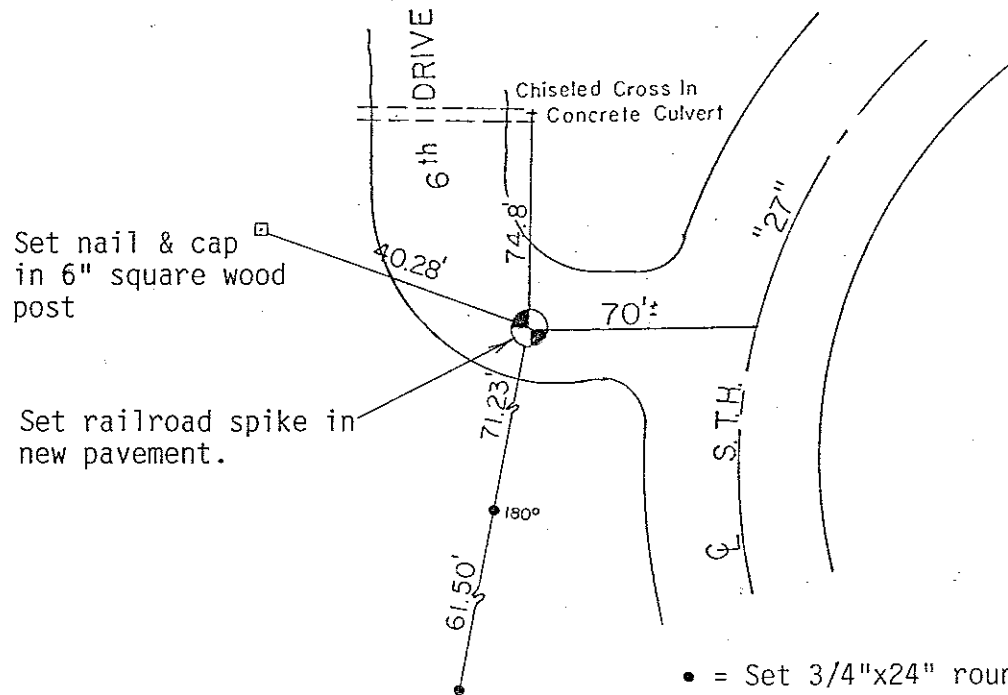
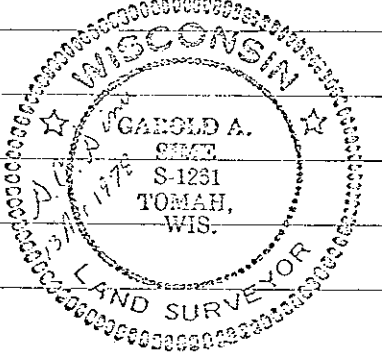
Garold A. Sime, Co. Surveyors Office
Title

Description of corner and witness monuments, references and accessories used to perpetuate the original or re-established location of this corner:

Set 1 1/4" Iron Bar at corner

Witnesses to corner location:

Sime
Pietz
Dechant



COUNTY SURVEYOR FORM NO. 1

SURVEY CONTROL ORDER

Horizontal	_____
Vertical	_____

WISCONSIN COORDINATE SYSTEM

Corner	East (X)	North (Y)	Elevation (Z)	Zone
Control Sta. Name				

City, Village or Town Little Falls

County of Monroe

I, Garold A. Sime, do hereby certify that on the 24th day of March 19 78, I found ~~(evidence)~~ (no evidence) of the Center 1/4 corner of Section 4, T 18 N, R 4 W, Fourth Principal Meridian, and I re-established said corner according to the Wisconsin Statutes as shown and described hereon.

History of original corner establishment:

No History of corner

Description of corner evidence found:

Set as per law

Dated this 13th day of April 19 78.

Garold A. Sime

Garold A. Sime, Co. Surveyors Office
Title

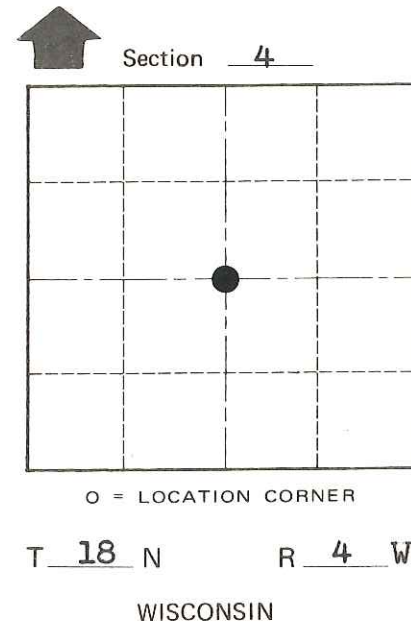
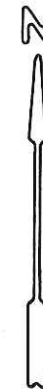
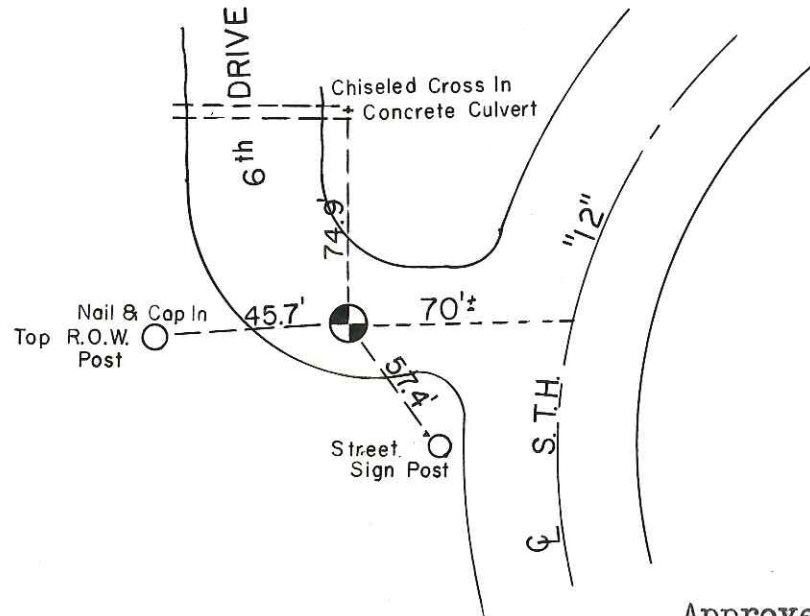
COUNTY SURVEYOR FORM NO. 1

Description of corner and witness monuments, references and accessories used to perpetuate the original or re-established location of this corner:

Set 1 1/4" Iron Bar at corner

Witnesses to corner location:

Sime
Pietz
Dechant



Approved by H.A.Sime, Monroe Co. Surveyor

SURVEY CONTROL ORDER

Horizontal	_____
Vertical	_____

WISCONSIN COORDINATE SYSTEM

Corner	East (X)	North (Y)	Elevation (Z)	Zone
Control Sta. Name				

City, Village or Town Little Falls

County of Monroe