

CERTIFICATE

CERTIFIED LAND CORNER

No. 17

21804042000

I, Gary L. Dechant, do hereby certify that on the 23rd day of February 2005, I found (evidence) (no evidence) of the NW corner of Section 3, T. 18 N, R. 4 W Fourth Principal Meridian, and I re-established said corner according to the Wisconsin Statutes as shown and described hereon.

Dated this 23 day of Feb 2005. Gary L. Dechant RLS 1744 Title

History of corner establishment since Original Government Survey

G.A. Sime shows a computed point at this corner on section summary dated March 1978.

Description of corner evidence found:

Found unrecorded 3/4" iron bar at the SW corner of the NW-SW, doubled the distance between said corner and the SW corner of Section 3 and on line, to set W corner Section 3,

Fits G.A. Sime's computed point within a foot +/-.

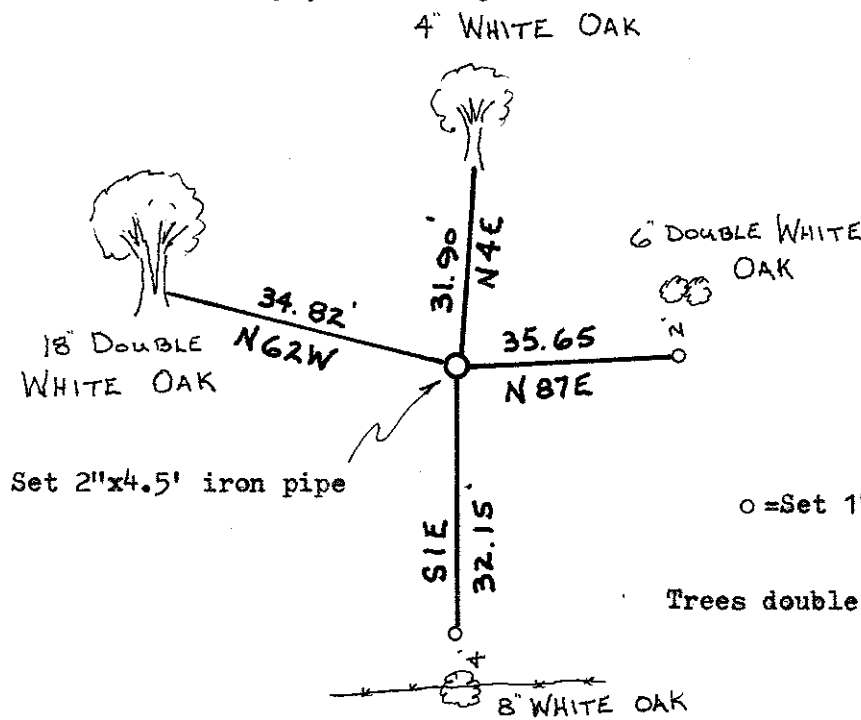
COUNTY SURVEYOR FORM NO. 1

Description of corner and witness monuments, references and accessories used to perpetuate the original or re-established location of this corner:

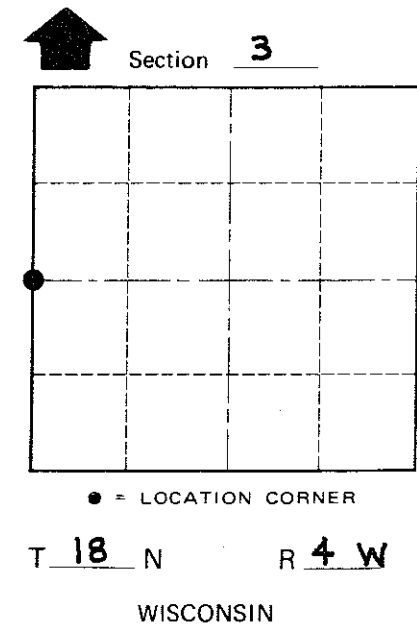
Witnesses to corner location:

Zachariah P. Dechant

Gary L. Dechant



Surveyor's seal for Gary L. Dechant, Wisconsin Land Surveyor S-1744, Camp Douglas, WI, dated February 23, 2005.



SURVEY CONTROL ORDER

Table with 2 columns: Control type (Horizontal, Vertical) and a blank space for order.

WISCONSIN COORDINATE SYSTEM

Table with 5 columns: Corner, Control Sta. Name, East (X), North (Y), Elevation (Z), Zone.

City, Village or Town LITTLE FALLS County of MONROE