

# U.S. PUBLIC LAND SURVEY MONUMENT RECORD

I, Eric A. Roeser, do hereby certify that on the 28th day of November of 2012, I re-established the South 1/4 Corner of Section 4, Township 18 North, Range 4 West, Fourth Principal Meridian, as described hereon; and set a new monument and accessories as described hereon to perpetuate the location of this corner; and that this U.S. Public Land Survey Monument Record is correct to the best of my knowledge and belief.

### Description of original monument and accessories subsequent to restorations:

1846: Original Corner (post) established by J. Dunn with the following accessories:

- 10-inch Bur Oak at N52°E, 44 lks.
- 10-inch Bur Oak at S15°E, 110 lks.

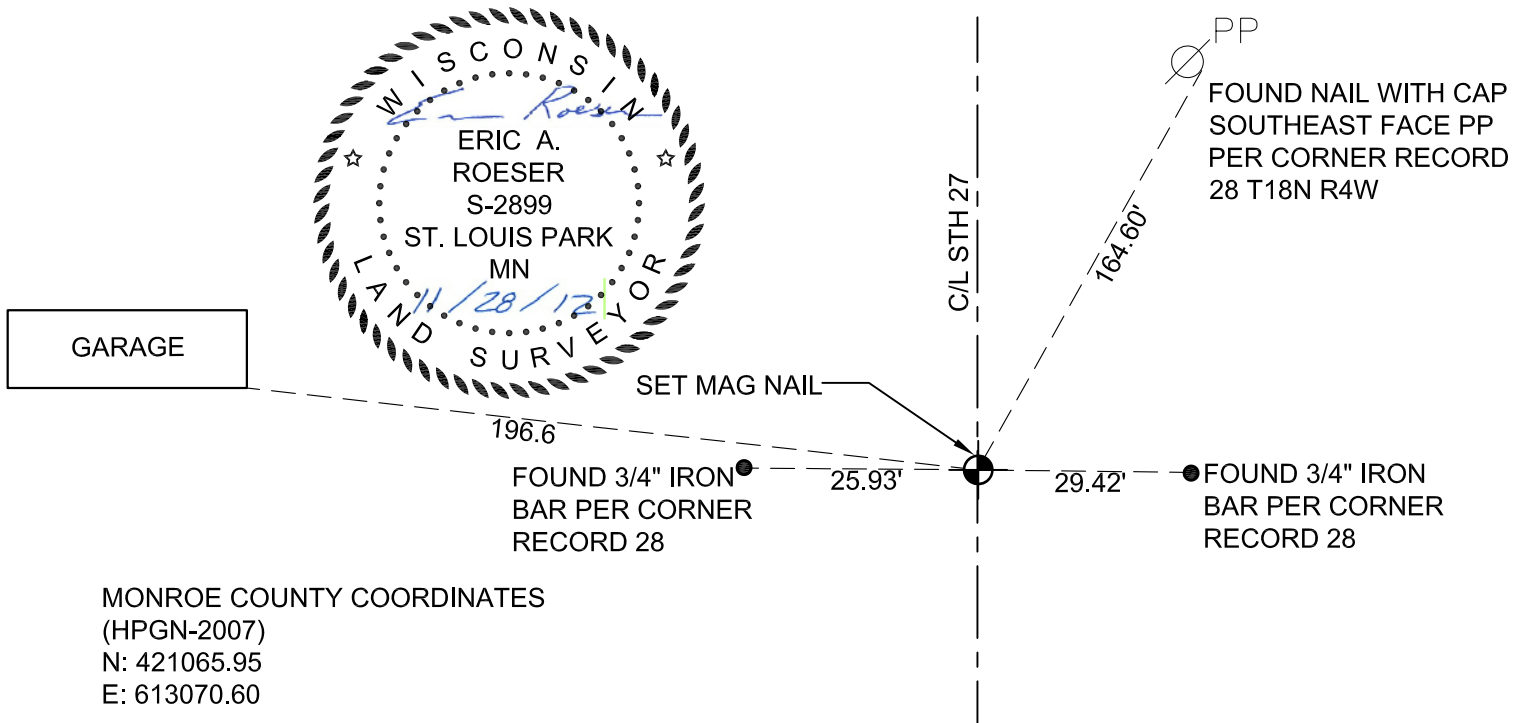
1978: Garold A. Sime (S-1251) recovered a nail and accepted the location as the best available evidence of the corner location. In 1987, the nail was replaced with a 3/4-inch iron bar. In 1989, a railroad spike was placed in the pavement above the iron bar in order to perpetuate the corner location at the surface of the road. The following accessories were referenced during the different vintages of the corner:

- Nail in power pole, 164.6 feet
- Corner of house, 110.85 feet
- Corner of garage, 196.6 feet
- 3/4 x 24 inch Iron bar, 29.42 feet
- 3/4 x 24 inch Iron bar, 25.93 feet

\*See corner record 28 for more information.

### Evidence found and justification for locating corner as shown:

In April 2012, I searched for but did not recover the monument of record. It has most likely been destroyed by recent construction along Highway 27. I did, however, recover all of the recorded ties, and set a mag nail at the corner location using the record distances from the ties.



MONROE COUNTY COORDINATES  
(HPGN-2007)  
N: 421065.95  
E: 613070.60

### T18N R4W

	<b>Section</b>	<b>4</b>	

Dated at St. Paul, Minnesota, this 28th day of November, 2012

Signature Eric Roeser

WI Registration No. 2899-8

Office of County Surveyor in Monroe County  
I hereby certify that the within instrument was filed in this office for record on the \_\_\_\_\_ day of \_\_\_\_\_, 2012

Signature \_\_\_\_\_  
Title: Monroe County Surveyor

21804040020

I, Garold A. Sime, do hereby certify that on the 24th day of March 1978, I found (evidence) (~~no evidence~~) of the South 1/4 corner of Section 4, T 18 N, R 4 W, Fourth Principal Meridian, and I re-established said corner according to the Wisconsin Statutes as shown and described hereon.

Dated this 13th day of April 1978.

Garold A. Sime

Garold A. Sime, Co. Surveyors Office  
Title

History of original corner establishment:

No recorded history since the Original Government Survey.

UPDATE: Gary Dechant was here in August of 1987 and replaced the nail of record with a 1 1/2" round iron bar.

Description of corner evidence found:

Found ex. Nail, accepted as best available evidence

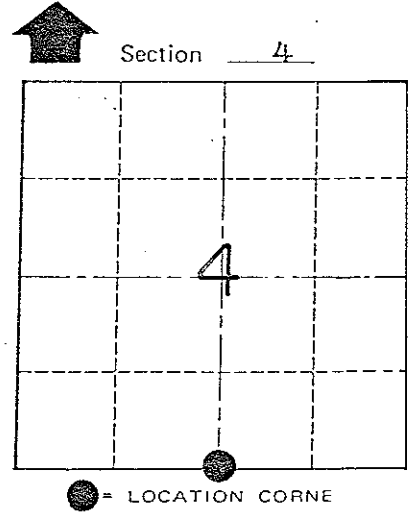
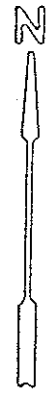
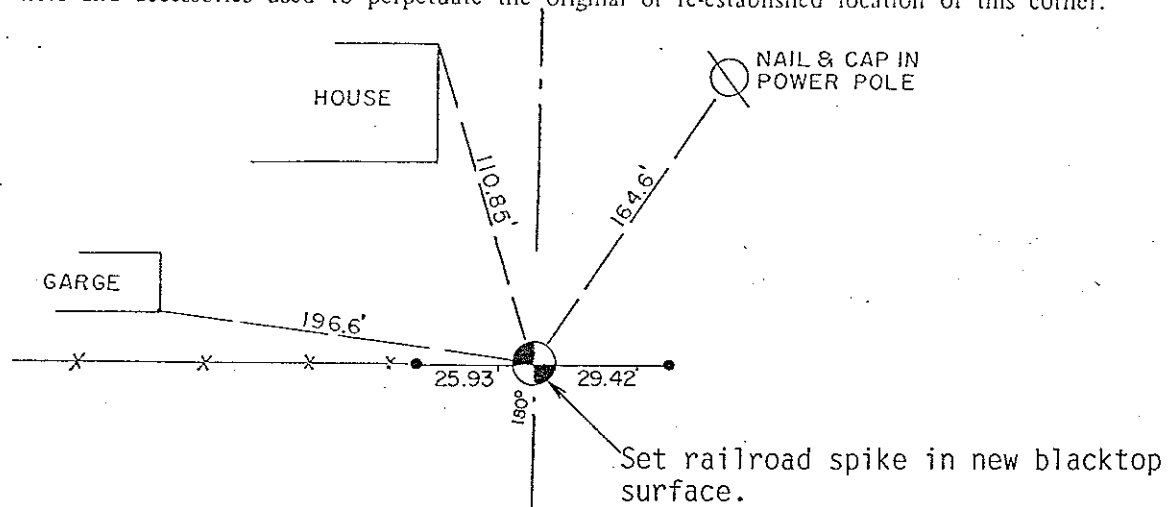
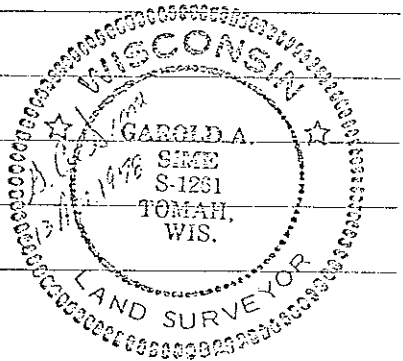
UPDATE: Nail has been replaced by 1 1/2" iron bar (See updated history). On March 28, 1989 Bryan Meyer and Brian Forsythe got additional ties for the corner (3/4" iron bars East and West of the corner). On August 11, 1989 Bryan Meyer and John Kenworthy measured off the ties and got a metal detector indication under new blacktop surface. They set a railroad spike at the corner from the ties. The railroad spike is believed to be directly over the 1 1/2" round iron bar.

Description of corner and witness monuments, references and accessories used to perpetuate the original or re-established location of this corner:

Existing Nail Down 3"

Witnesses to corner location:

Sime  
Pietz  
Dechant



• = Set 3/4"x24" round iron bar

T 18 N R 4 W

WISCONSIN

COUNTY SURVEYOR FORM NO. 1

SURVEY CONTROL ORDER

Horizontal	_____
Vertical	_____

WISCONSIN COORDINATE SYSTEM

Corner	East (X)	North (Y)	Elevation (Z)	Zone
Control Sta. Name				

City, Village or Town Little Falls

County of Monroe

I, Garold A. Sime, do hereby certify that on the 24<sup>th</sup> day of March 1978, I found (evidence) (~~no evidence~~) of the South 1/4 corner of Section 4, T 18 N, R 4 W, Fourth Principal Meridian, and I re-established said corner according to the Wisconsin Statutes as shown and described hereon.

Dated this 13<sup>th</sup> day of April 1978.

Garold A. Sime

Garold A. Sime, Co. Surveyors Office  
Title

History of original corner establishment:

No History of corner since Original Government Survey

Description of corner evidence found:

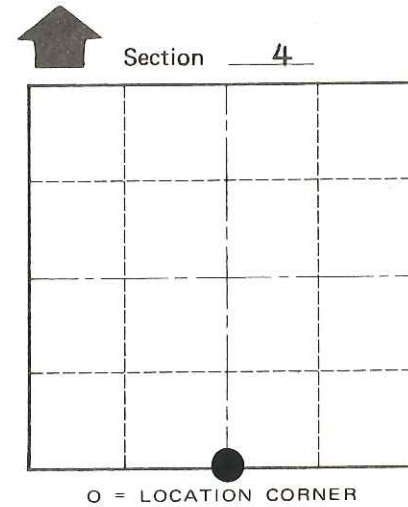
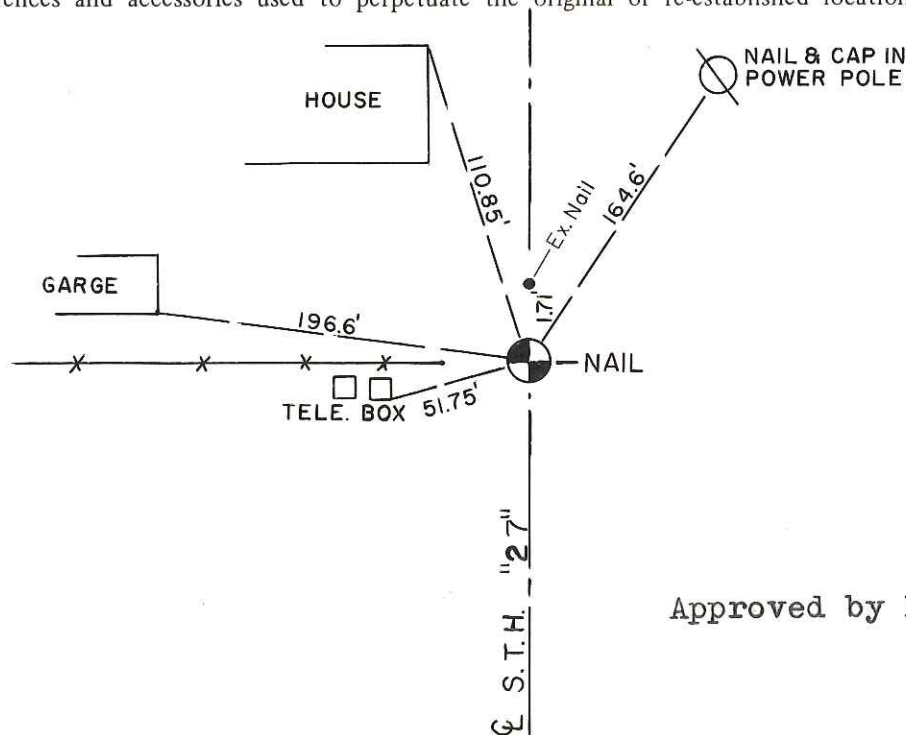
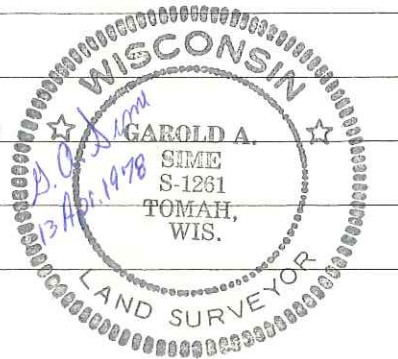
Found ex. Nail, accepted as best available evidence

Description of corner and witness monuments, references and accessories used to perpetuate the original or re-established location of this corner:

Existing Nail Down 3"

Witnesses to corner location:

Sime  
Pietz  
Dechant



T 18 N R 4 W

WISCONSIN

Approved by H.A.Sime, Monroe Co. Surveyor

COUNTY SURVEYOR FORM NO. 1

SURVEY CONTROL ORDER

Horizontal	_____
Vertical	_____

WISCONSIN COORDINATE SYSTEM

Corner	East (X)	North (Y)	Elevation (Z)	Zone
Control Sta. Name				

City, Village or Town Little Falls

County of Monroe