

21804030020

I, William C. Jung, do hereby certify that on the 26th day of October 1985, I found (evidence) ~~(no evidence)~~ of the North 1/4 corner of Section 10, T 18 N, R 4 W, Fourth Principal Meridian, and I re-established said corner according to the Wisconsin Statutes as shown and described hereon.

Dated this 16th day of Nov. 1985.

William C. Jung

Registered Land Surveyor 1323

Title

History of corner establishment since Original Government Survey

No known recorded history since the original government survey.

Description of corner evidence found:

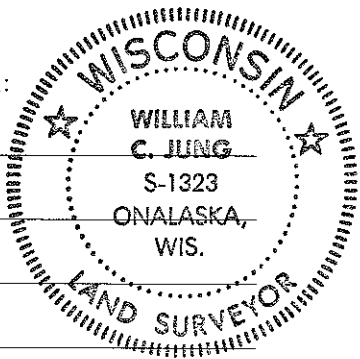
I accepted the occupied corner as the best available evidence of the original government corner and monumented it with a Harrison marker.

Description of corner and witness monuments, references and accessories used to perpetuate the original or re-established location of this corner:

Witnesses to corner location:

William C. Jung

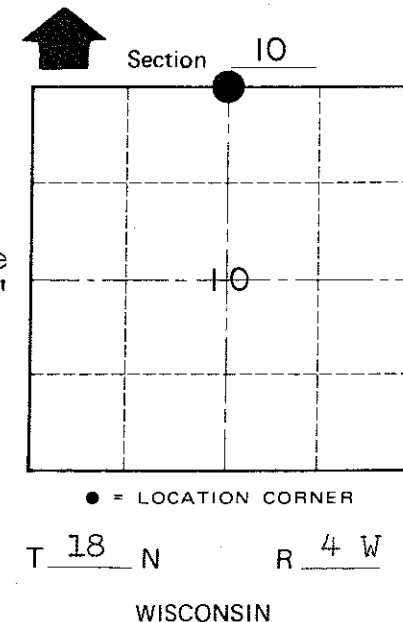
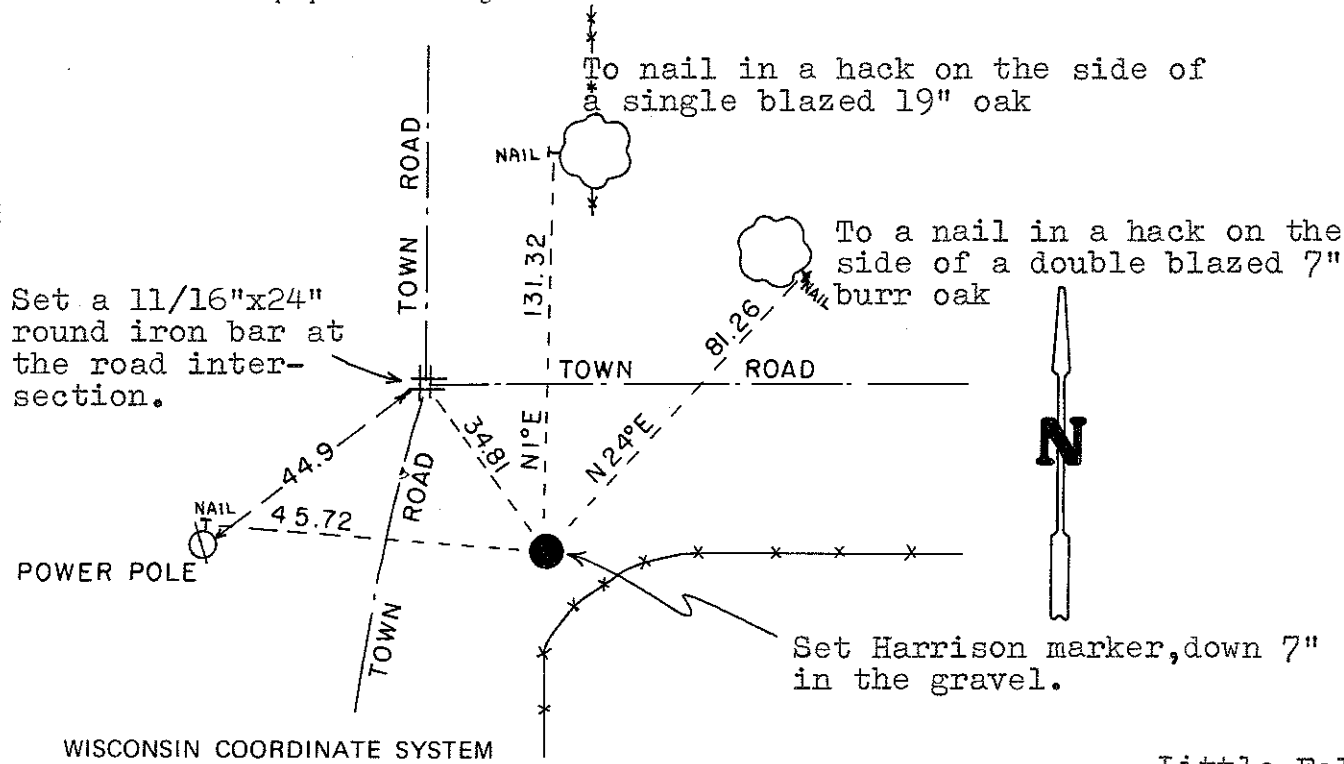
Bryan Meyer



Approved: Harley Sime
County Surveyor

SURVEY CONTROL ORDER

Horizontal	_____
Vertical	_____



WISCONSIN COORDINATE SYSTEM

Corner	East (X)	North (Y)	Elevation (Z)	Zone
Control Sta. Name				

City, Village or Town Little Falls
County of Monroe
Wisconsin

COUNTY SURVEYOR FORM NO. 1