

# 19

**U.S. PUBLIC LAND CORNER  
MAINTENANCE**

**Corner ID : E1/4 Sec. 2, T18N-R4W**

**21804022000**

<u>DATE</u>	<u>CREW</u>	<u>MONUMENT TYPE</u> -----
November 4, 2015	Zachariah P.Dechant Gary L. Dechant	Existing Harrison intact, down 3", in center Dellview Road, 19' north of driveway FN 7375/7377

References:

	<u>Bearing</u>	<u>Distance</u>
1) Set 3/4"x24" iron bar, down 6" in lawn	N33E	49.42'
2) Set 3/4"x24" iron bar, down 6" in lawn, 6' NW of 12" Cedar, 23' north of driveway Fire No. 7454	S54E	33.47'
3) Set 3/4"x24" iron bar, down 6" in lawn, south of driveway, 8' south of 14" Double Red Pine	S33W	56.80'
4) Set 3/4"x24" iron bar, down 6"	N54W	56.53'

**Harrison & reference markers set on straight lines**



I, William C. Jung, do hereby certify that on the 19<sup>th</sup> day of November 19 79, I found (evidence) ~~(no evidence)~~ of the West 1/4 corner of Section 1, T 18 N, R 4 W, Fourth Principal Meridian, and I re-established said corner according to the Wisconsin Statutes as shown and described hereon.

Dated this 4<sup>th</sup> day of Feb. 19 81.

William C. Jung

William C. Jung, R.L.S. 1323

Approved: <sup>Title</sup> **HARLEY A. SIME**

**MONROE CO, SURVEYOR**

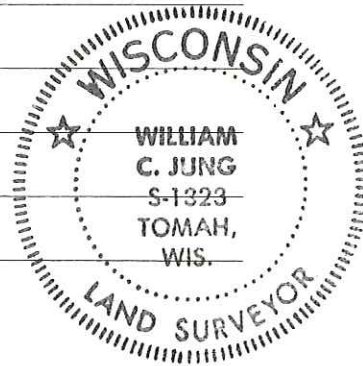
Description of corner and witness monuments, references and accessories used to perpetuate the original or re-established location of this corner:

Witnesses to corner location:

Jung

Pietz

Tormoen



COUNTY SURVEYOR FORM NO. 1

History of original corner establishment:

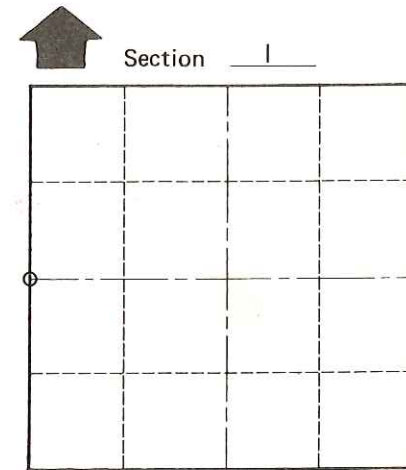
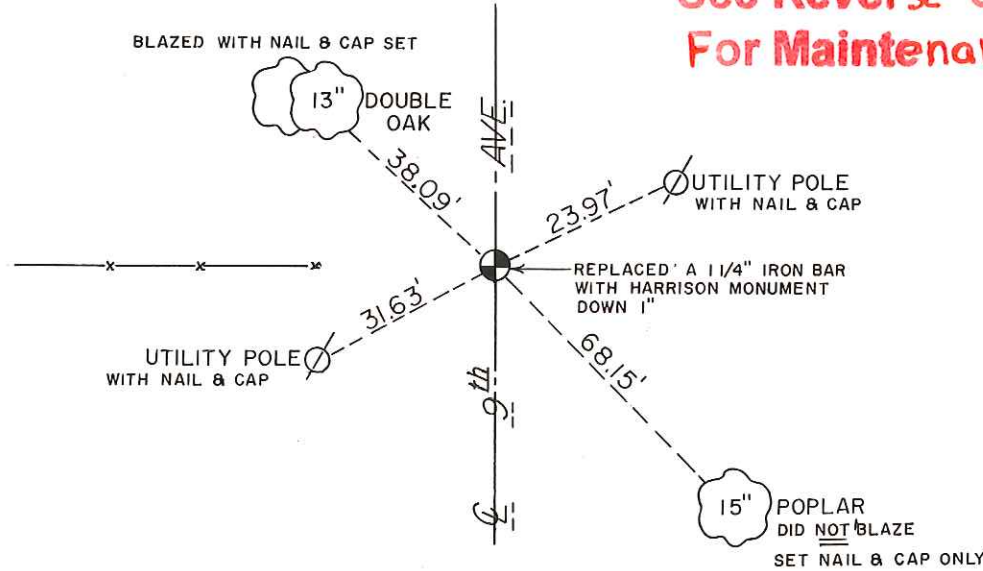
Duane Marten set an iron bar at this corner in July of 1974. Larry Feddersen used this corner in July of 1976 when he did a survey in Section 2.

Description of corner evidence found:

Found the corner of record, removed the iron bar and replaced it with a Harrison marker.

See Reverse Side For Maintenance

See Reverse Side For Maintenance



O = LOCATION CORNER  
T 18 N R 4 W  
WISCONSIN

SURVEY CONTROL ORDER

Horizontal	_____
Vertical	_____

WISCONSIN COORDINATE SYSTEM

Corner	East (X)	North (Y)	Elevation (Z)	Zone
Control Sta. Name				

\_\_\_\_\_ or Town Little Falls

County of Monroe