

**U.S. PUBLIC LAND CORNER
MAINTENANCE**

Corner ID : SE Sec. 1, T18N-R4W

21804010000

<u>FIELD DATE</u>	<u>CREW</u>	<u>MONUMENT TYPE -----</u>
September 27, 2017	Zachariah P. Dechant Gary L. Dechant	Existing Harrison intact, Set sign 1' south, 100' south of fence

<u>References:</u>	<u>Bearing</u>	<u>Distance</u>
1) Set 3/4" x 24" round iron bar, down 6", 5' west of 14" Maple	N2E	20.30'
2) Set 3/4"x24" round iron bar, down 6", 6' south of 16" Maple	S55E	13.07'
3) Set 3/4" x24" round iron bar, down 6", 5' SE of 16" double Burr Oak	S78W	19.49'
4) Set 3/4"x24" round iron bar, down 6"	N36W	21.97'



=====

I, William C. Jung, do hereby certify that on the 6th day of November 19 78, I found ~~(evidence)~~ (no evidence) of the NW corner of Section 7, T 18 N, R 3 W Fourth Principal Meridian, and I re-established said corner according to the Wisconsin Statutes as shown and described hereon.

Dated this 4th day of Jan. 19 79.

William C. Jung, R.L.S.

County Surveyor's Office

History of original corner establishment:

Holden was at this corner in Jan. of 1908.

Description of corner evidence found:

Set the corner on line and proportionately between the SW corner of Section 7 and the NW corner of Section 6.

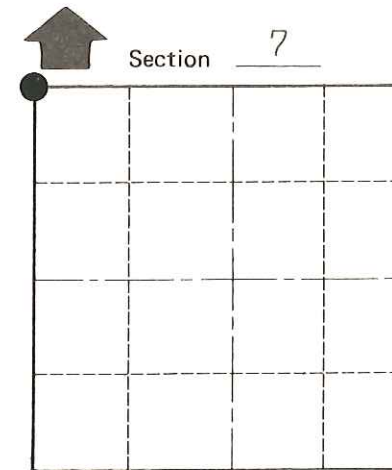
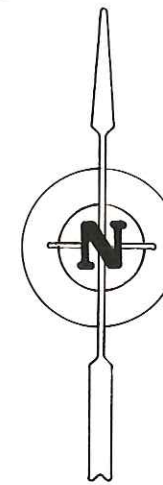
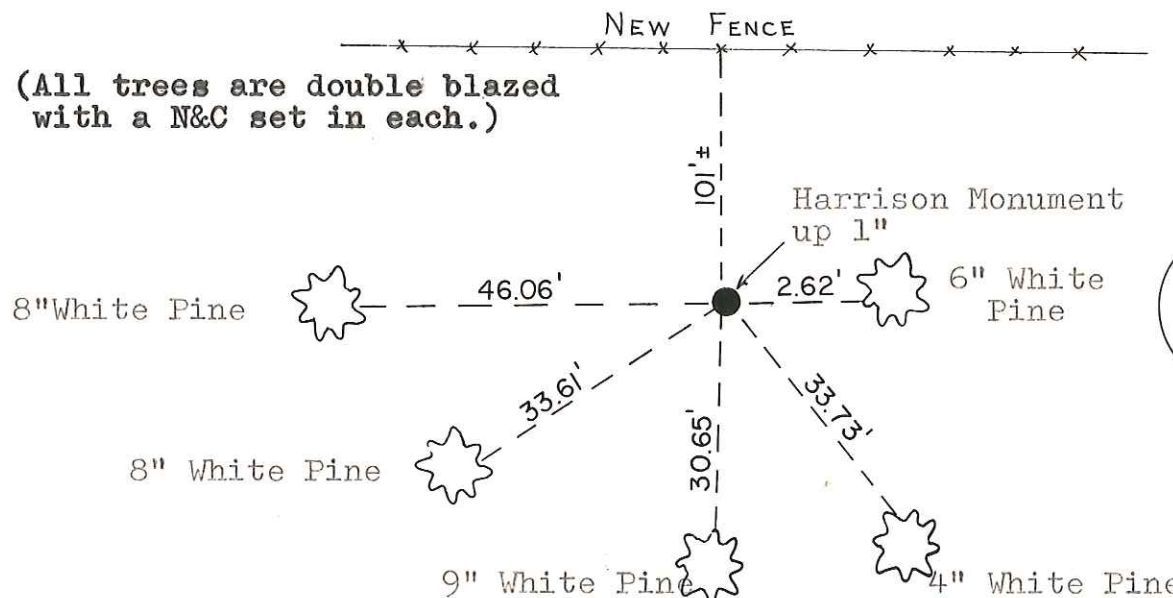
See Reverse Side For Maintenance

Description of corner and witness monuments, references and accessories used to perpetuate the original or re-established location of this corner:

Witnesses to corner location:

G. Dechant

L. Lakowske



● = LOCATION CORNER
T 18 N R 3 W
WISCONSIN

Approved by: Harley A. Sime
County Surveyor

SURVEY CONTROL ORDER

Horizontal	_____
Vertical	_____

WISCONSIN COORDINATE SYSTEM

Corner	East (X)	North (Y)	Elevation (Z)	Zone
Control Sta. Name				

City, Village or Town Lafayette

County of Monroe

COUNTY SURVEYOR FORM NO. 1