

21804082000

I, William C. Jung, do hereby certify that on the 29th day of November 1979, I found (evidence) (~~marked~~) of the East 1/4 corner of Section 8, T18 N, R 4 W, Fourth Principal Meridian, and I re-established said corner according to the Wisconsin Statutes as shown and described hereon.

History of original corner establishment:

Schroeder (?) reestablished this corner in May of 1886. Harley Sime set a pipe at this corner in June of 1965. Heidecke used this pipe in his November, 1979 survey for Benzing.

Description of corner evidence found:

Found the corner of record used in previous surveys, removed the pipe and replaced it with a Harrison marker.

Dated this 3rd day of Feb. 1981.

William C. Jung

William C. Jung, R.L.S. 1323

Approved: **HARLEY A. SIME**  
**MONROE CO. SURVEYOR**

Description of corner and witness monuments, references and accessories used to perpetuate the original or re-established location of this corner:

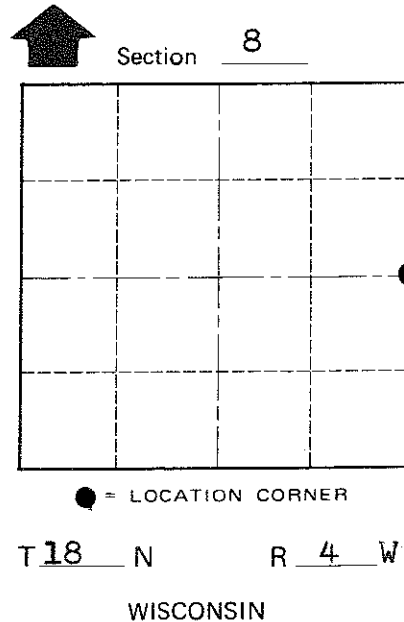
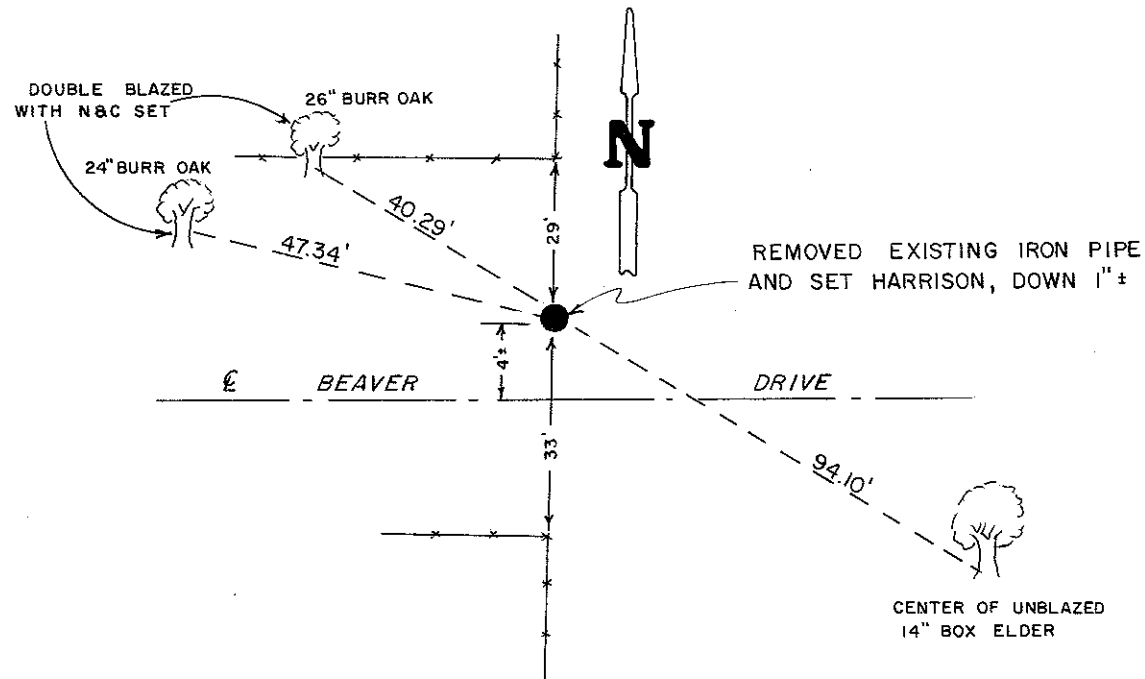
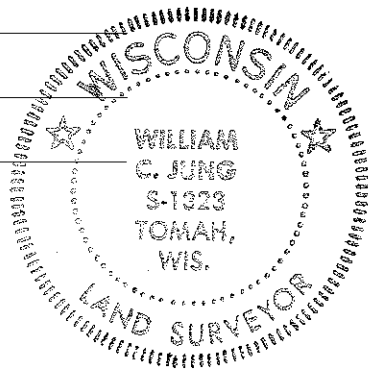
COUNTY SURVEYOR FORM

Witnesses to corner location:

W. Jung

R. Hayden

G. Dechant



SURVEY CONTROL ORDER

Horizontal	_____
Vertical	_____

WISCONSIN COORDINATE SYSTEM

Corner	East (X)	North (Y)	Elevation (Z)	Zone
Control Sta. Name				

~~City, Village~~ or Town Little Falls  
County of Monroe