

21804080020

I, Mark R. Heidecke, do hereby certify that on the 6th day of December 19 79, I found (evidence) ~~XXXXXXXX~~ of the South 1/4 corner of Section 8, T 18 N, R 4 W Fourth Principal Meridian, and I re-established said corner according to the Wisconsin Statutes as shown and described hereon.

Dated this 9th day of January 1980.

Mark R. Heidecke

Registered Land Surveyor
Title

History of corner establishment since Original Government Survey

No subsequent history of monument perpetuation since the Original U.S. Government Survey in Monroe County.

Description of corner evidence found:

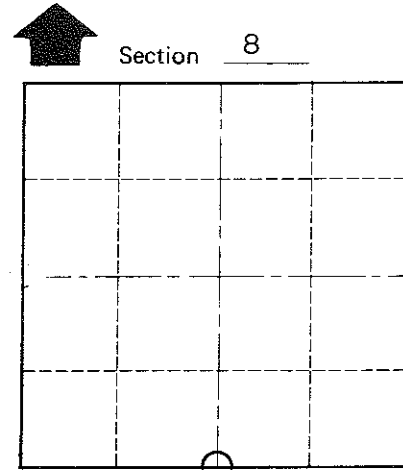
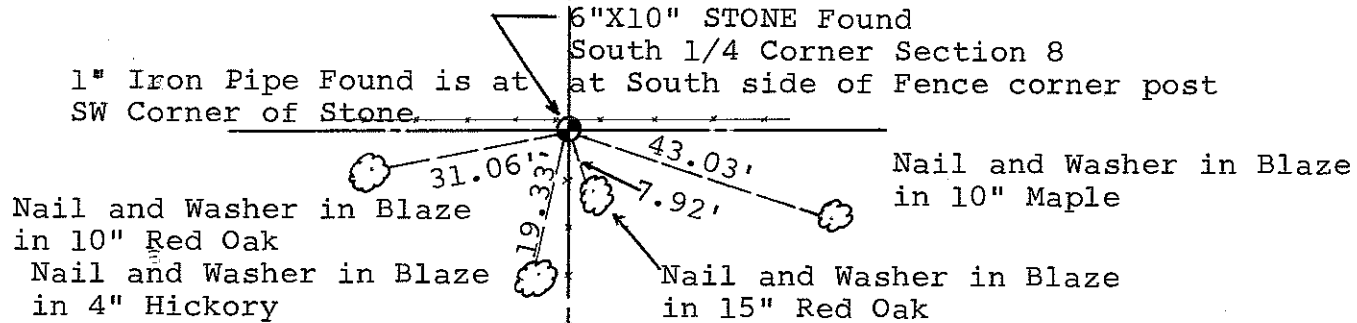
A 6"X10" Stone monument was found at a fence corner at this location. This monument is compatible with the interior occupation within Section 8.

Description of corner and witness monuments, references and accessories used to perpetuate the original or re-established location of this corner:

Witnesses to corner location:

Mark Heidecke

Lawrence Feddersen



T 18 N R 4 W
WISCONSIN

COUNTY SURVEYOR FORM NO. 1

SURVEY CONTROL ORDER

Horizontal	_____
Vertical	_____

WISCONSIN COORDINATE SYSTEM

Corner	East (X)	North (Y)	Elevation (Z)	Zone
Control Sta. Name				

~~XXXXXXXX~~ Town of Little Falls
County of Monroe