

# 77

**U.S. PUBLIC LAND CORNER  
MAINTENANCE**

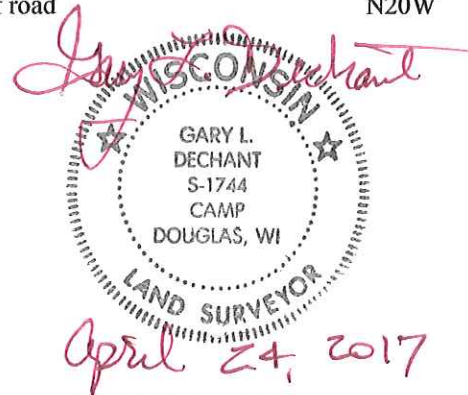
**Corner ID : E1/4 Sec.21, T18N-R1E**

**41801212000**

<u>DATE</u>	<u>CREW</u>	<u>MONUMENT TYPE</u> -----
November 12, 2016	Zachariah P.Dechant Gary L. Dechant	Railroad spike over Harrison in center line of Excelsior Ave

References:

	<u>Bearing</u>	<u>Distance</u>
1) Set 3/4"x24" iron bar, down 12", 46' north of road	N48E	60.37'
2) Set 3/4"x24" iron bar, down 8", 67' south of road	S40E	89.25'
3) Set 3/4"x24" iron bar, down 8", 10' east of fence, 12' north of 12" Pine	S10E	48.85'
4) Set 3/4"x24" iron bar, down 12", 46' north of road	N20W	49.28'



I, William C. Jung, do hereby certify that on the thirty-first day of July 1980 I found (evidence) ~~no evidence~~ of the East 1/4 corner of Section 21, T 18 N, R 1 E Fourth Principal Meridian, and I re-established said corner according to the Wisconsin Statutes as shown and described hereon.

Dated this 23rd day of Feb. 19 81.

William C. Jung  
 William C. Jung-R.L.S. 1323  
 Title

**History of corner establishment since Original Government Survey**  
 Schroeder (?) reset this corner in December of 1889.  
 Ray Hurlburt found a bolt at this corner in October of 1940 and set another bolt next to the existing one. Mulock found a bolt at this corner in his surveys of June and August, 1967.  
 Feddersen set a 1 1/4" iron bar on top of an existing bolt in May of 1976. Malliet used Description of corner evidence found: this corner in his September 1977 survey.

Removed a 1 1/4" x 30" iron bar and replaced it with a Harrison monument, set down 6"±. Harrison is set over a large metal object.

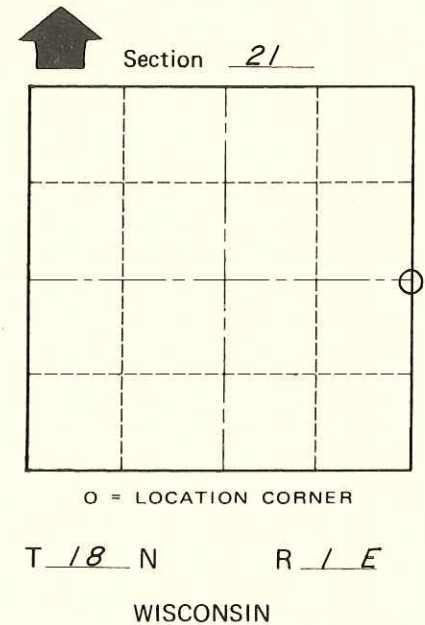
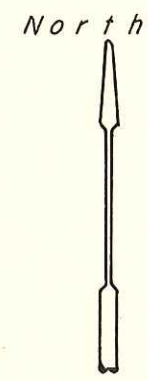
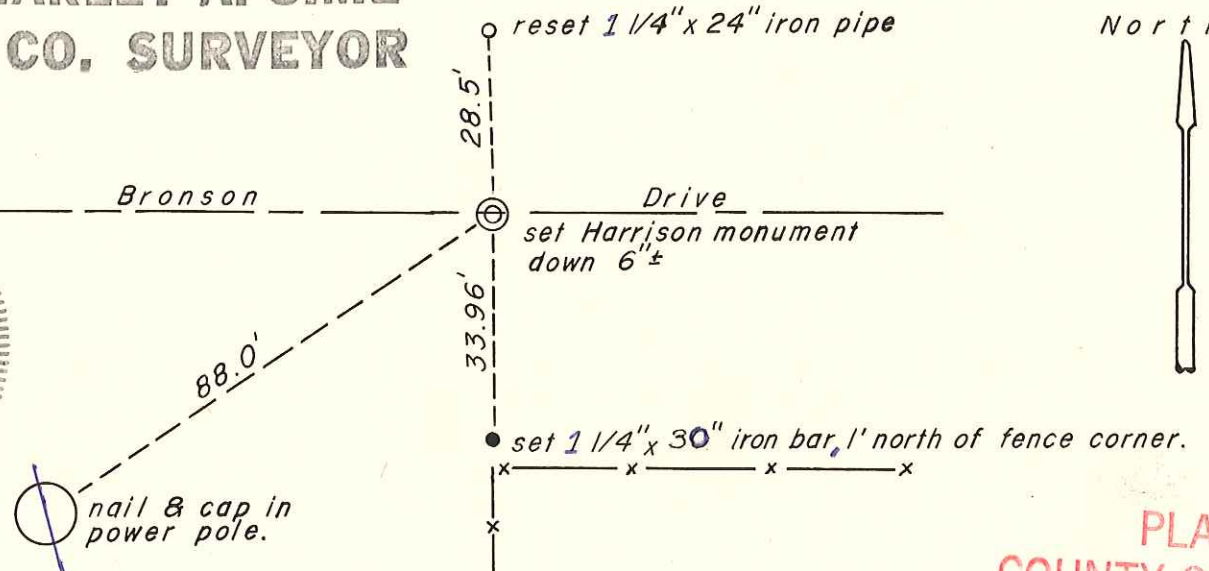
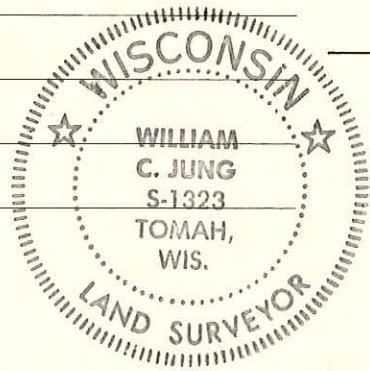
**See Reverse Side For Maintenance**

COUNTY SURVEYOR FORM NO. 1

Description of corner and witness monuments, references and accessories used to perpetuate the original or re-established location of this corner:

Approved: **HARLEY A. SIME**  
**MONROE CO. SURVEYOR**

Witnesses to corner location:  
William C. Jung  
Carl R. Pietz



SURVEY CONTROL ORDER

Horizontal	_____
Vertical	_____

WISCONSIN COORDINATE SYSTEM

Corner	East (X)	North (Y)	Elevation (Z)	Zone
Control Sta. Name				

**PLACED COUNTY SURVEYOR'S SIGN 6/12/87**

~~City, Village of~~ Town of Byron  
 County of Monroe  
Wisconsin