

# 88

**U.S. PUBLIC LAND CORNER  
MAINTENANCE**

**Corner ID : S1/4 Sec. 21 T18N-R1E**

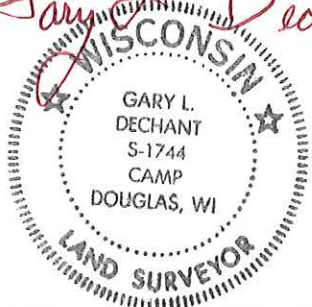
**41801210020**

<u>DATE</u>	<u>CREW</u>	<u>MONUMENT TYPE -----</u>
August 25, 2016	Zachariah P.Dechant Gary L. Dechant	Existing Harrison intact, down 6". On line with fence north. 5' south of center line Franklin Ave.

References:

	<u>Bearing</u>	<u>Distance</u>
1) Set 3/4"x24" round iron bar, down 3", 14' SW of 26" White Pine SW of sand trap	N53E	81.45'
2) Set 3/4"x24 round iron bar, down 4" in shallow pit, west of large mound	S24E	46.80'
3) Existing 3/4" iron pipe	South	33.22'
4) Set 3/4"x24" round iron bar, down 10", 12' west of entrance	S53W	53.31
5) Set 3/4"x24" round iron bar, down 10"	N24W	51.15'

Harrison & reference markers set on straight lines.

*Gary L. Dechant*  
  
*November 29, 2016*

I, William C. Jung do hereby certify that on the thirty-first day of July 1980, I found (evidence) ~~the evidence~~ of the North 1/4 corner of Section 28, T 18 N, R 1 E Fourth Principal Meridian, and I re-established said corner according to the Wisconsin Statutes as shown and described hereon.

Dated this 23rd day of Feb. 19 81.

William C. Jung  
 Title  
William C. Jung - R.L.S. 1323

**History of corner establishment since Original Government Survey**

Mulock set an iron pipe at this corner in August of 1967. He found a downed fence about 300'± South of the corner. The corner was set on line with the existing monuments he found along the North line of the NE¼ of Section 28.

**Description of corner evidence found:**

Found a 1¼" x 30" iron bar. Removed the iron bar and replaced it with a Harrison monument, down 5". It appears that Heidecke, in 1979, set this iron bar at Mulock's old corner.

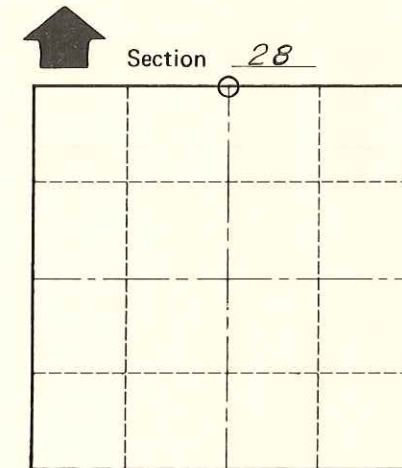
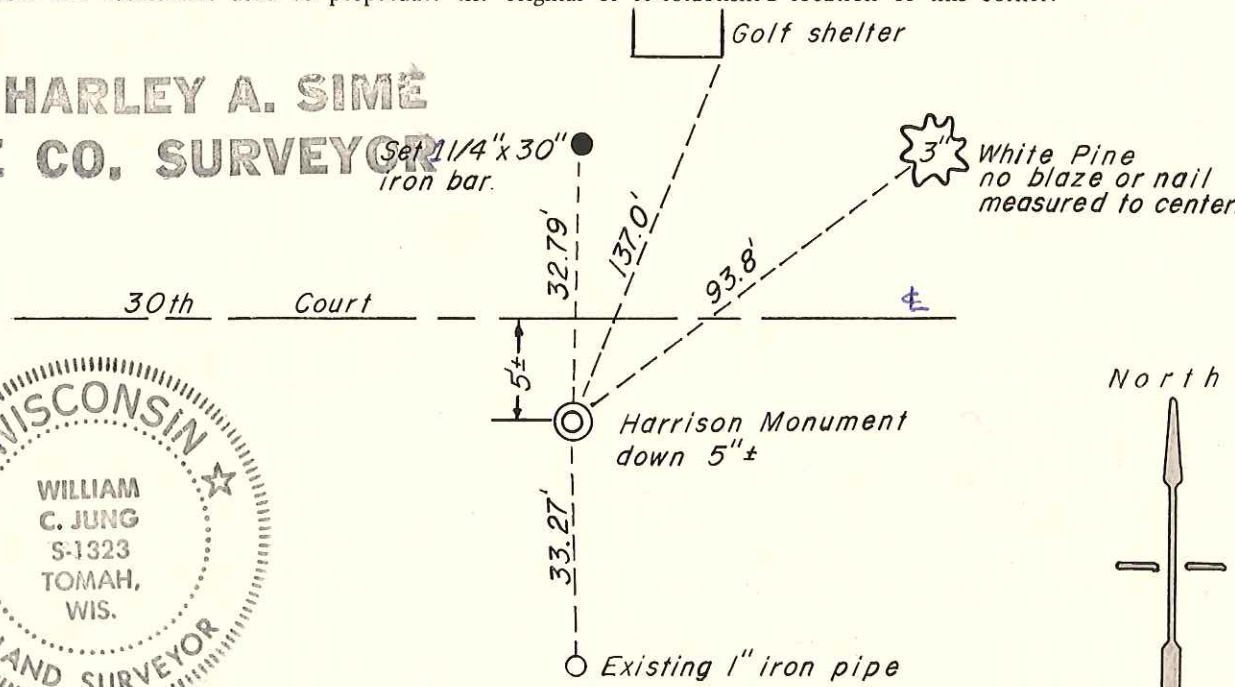
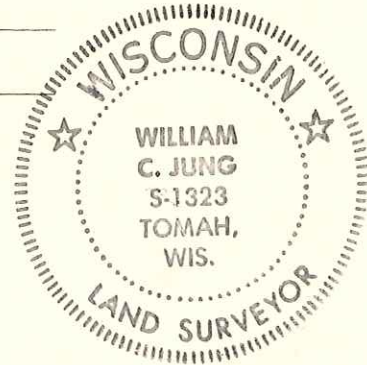
**See Reverse Side For Maintenance**

COUNTY SURVEYOR FORM NO. 1

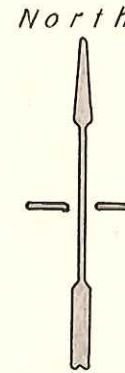
Description of corner and witness monuments, references and accessories used to perpetuate the original or re-established location of this corner:

Witnesses to corner location:  
W. Jung  
C. Pietz

**Approved: HARLEY A. SIMÉ  
 MONROE CO. SURVEYOR**



O = LOCATION CORNER  
 T 18 N R 1 E  
 WISCONSIN



**PLACED  
 COUNTY SURVEYOR'S  
 SIGN  
 5-19-87**

**SURVEY CONTROL ORDER**

Horizontal	_____
Vertical	_____

**WISCONSIN COORDINATE SYSTEM**

Corner	East (X)	North (Y)	Elevation (Z)	Zone
Control Sta. Name				

~~City, Village or~~ Town of Byron  
 County of Monroe  
Wisconsin