

41801210000

I, William C. Jung, do hereby certify that on the 23rd day of September 19 81, I found (evidence) ~~no evidence~~ of the SW corner of Section 22, T 18 N, R 1 E Fourth Principal Meridian, and I re-established said corner according to the Wisconsin Statutes as shown and described hereon.

Dated this 24th day of Sept. 19 81.

William C. Jung, R.L.S. 1323

County Surveyor's Office

*William C. Jung*

History of corner establishment since Original Government Survey

Kenyon(?) shows this corner in his notes of December, 1889. Harley Sime set a 2" iron pipe at the occupied corner in 1961. Donald Mulock used this iron pipe in his survey of August, 1967.

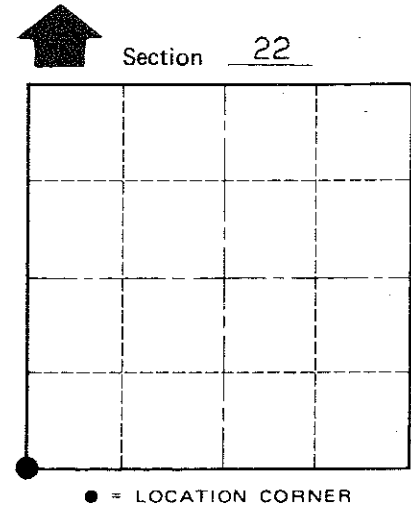
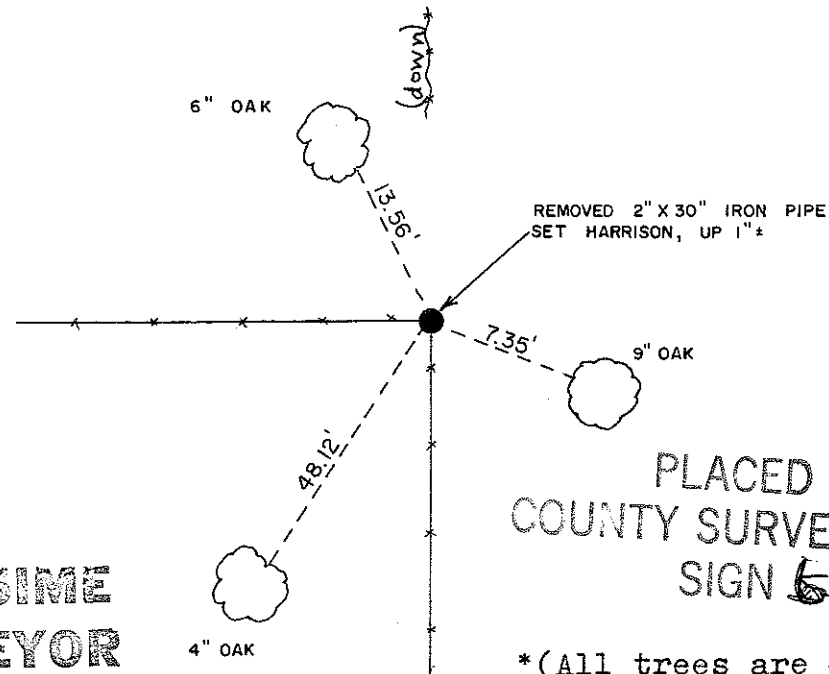
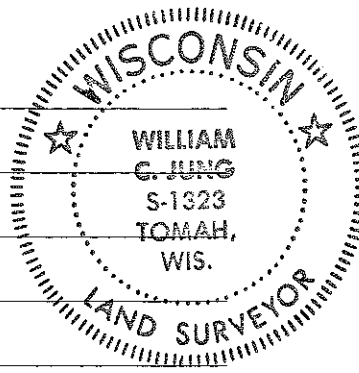
Description of corner evidence found:

Found the iron pipe at the old occupied fence corner, removed the pipe and replaced it with a Harrison marker. Accepted this corner as the best available evidence of the original government corner.

Description of corner and witness monuments, references and accessories used to perpetuate the original or re-established location of this corner:

Witnesses to corner location:

W. Jung  
C. Pietz



T 18 N R 1 E  
WISCONSIN

Approved: **HARLEY A. SIME**  
**MONROE CO. SURVEYOR**

PLACED  
COUNTY SURVEYOR'S  
SIGN 5-22-87

\*(All trees are double blazed with N&C set in lower blaze)\*

SURVEY CONTROL ORDER

Horizontal \_\_\_\_\_  
Vertical \_\_\_\_\_

WISCONSIN COORDINATE SYSTEM

Corner	East (X)	North (Y)	Elevation (Z)	Zone
Control Sta. Name				

COUNTY SURVEYOR FORM NO. 1

~~City/Village~~ Town Byron  
County of Monroe