

75

**U.S. PUBLIC LAND CORNER
MAINTENANCE**

Corner ID : E1/4 Sec.19, T18N-R1E

41801192000

<u>DATE</u>	<u>CREW</u>	<u>MONUMENT TYPE</u> -----
October 14, 2014	Zachariah P.Dechant Gary L. Dechant	Found Harrison , top broke off at road PI of CTH "N" down 10"

References:

	<u>Bearing</u>	<u>Distance</u>
1) Set 3/4"x24" square iron bar down 10", NE of CTH N	N74E	112.45'
2) Set 3/4"x24" square iron bar, down 10" in field	S50E	45.40'
3) Set 3/4"x24" square iron bar, down 10", 5' south of 16"Black Oak (BT)	S74W	61.93'
4) Set 3/4"x24" square iron bar, down 10", 2' west of sign fire no. 10383 CTH "N"	N50W	38.75'

Harrison and reference markers set on straight lines.

Gary L. Dechant

October 14, 2014

I, William C. Jung, do hereby certify that on the 7th day of August 1981, I found (evidence) ~~(no evidence)~~ of the East 1/4 corner of Section 19, T 18 N, R 1 E, Fourth Principal Meridian, and I re-established said corner according to the Wisconsin Statutes as shown and described hereon.

Dated this 28th day of August 1981.

William C. Jung

Registered Land Surveyor

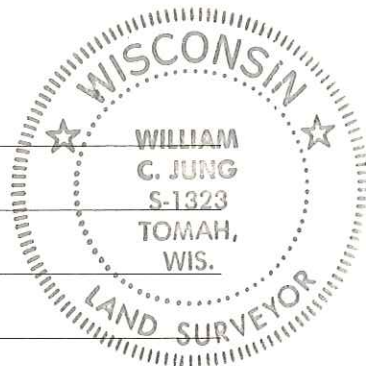
William C. Jung

Description of corner and witness monuments, references and accessories used to perpetuate the original or re-established location of this corner:

Witnesses to corner location:

G. Dechant

C. Pietz



Approved: **HARLEY A. SIME**
MONROE CO. SURVEYOR

SURVEY CONTROL ORDER

Horizontal _____

Vertical _____

WISCONSIN COORDINATE SYSTEM

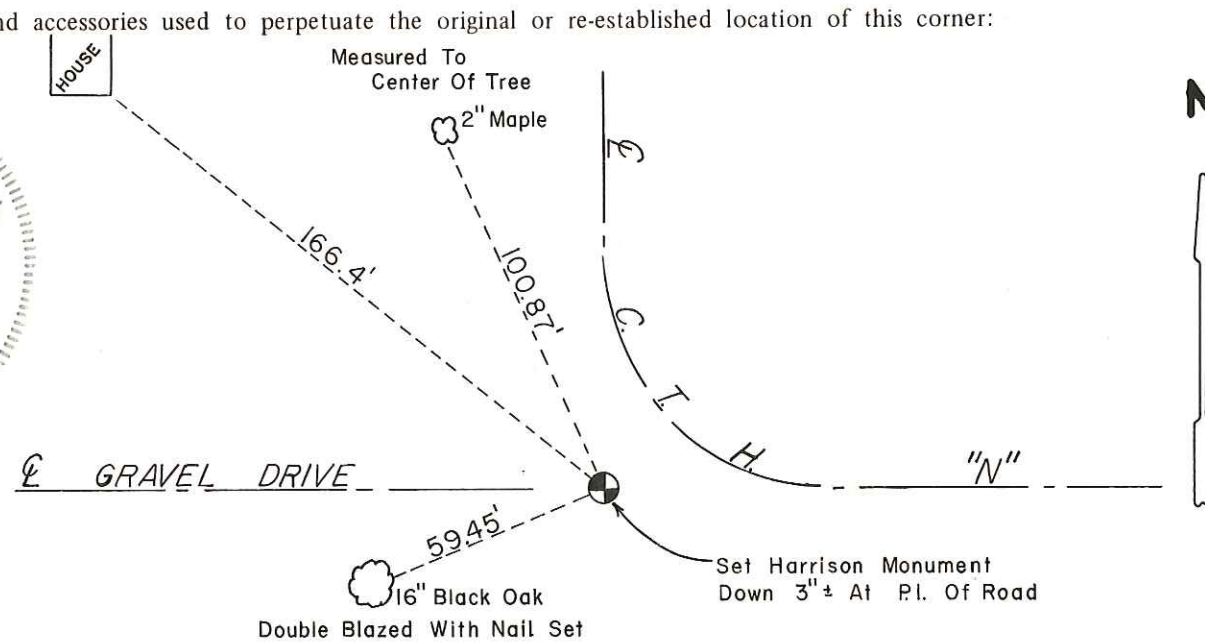
Corner	East (X)	North (Y)	Elevation (Z)	Zone
Control Sta. Name				

History of original corner establishment:

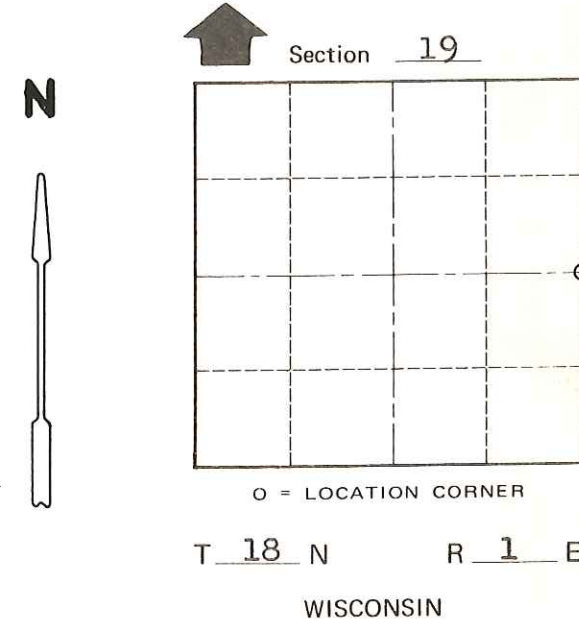
Mark Heidecke found a 1" square iron bar at this corner in May of 1979.

Description of corner evidence found:

Found Heidecke's iron bar, removed it and set a Harrison marker.



See Reverse Side For Maintenance



SIGN PLACED 12/20/86 Kenworthy

~~City/Village of~~ Town Byron
County of Monroe
Wisconsin

COUNTY SURVEYOR FORM NO. 1