

41801190020

I, Garold A. Sime, do hereby certify that on the 11<sup>th</sup> day of October 19 83, I found (evidence) ~~of the~~ of the South 1/4 corner of Section 19, T. 18 N., R. 1 E Fourth Principal Meridian, and I re-established said corner according to the Wisconsin Statutes as shown and described hereon.

History of corner establishment since Original Government Survey

Schroeder or Kenyon was here in May of 1883.

Description of corner evidence found:

Accepted centerline of road and fence to the North as the best available evidence.

Dated this 19<sup>th</sup> day of Jan. 19 84.

Garold A. Sime

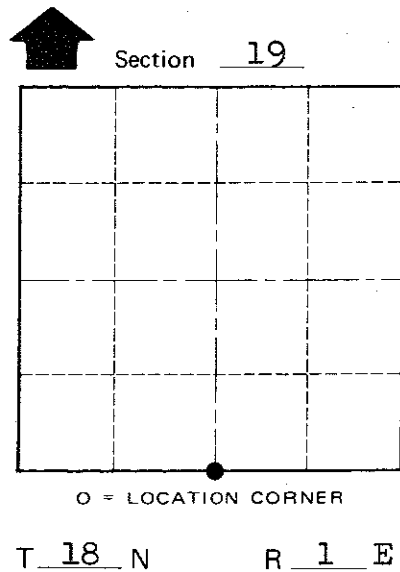
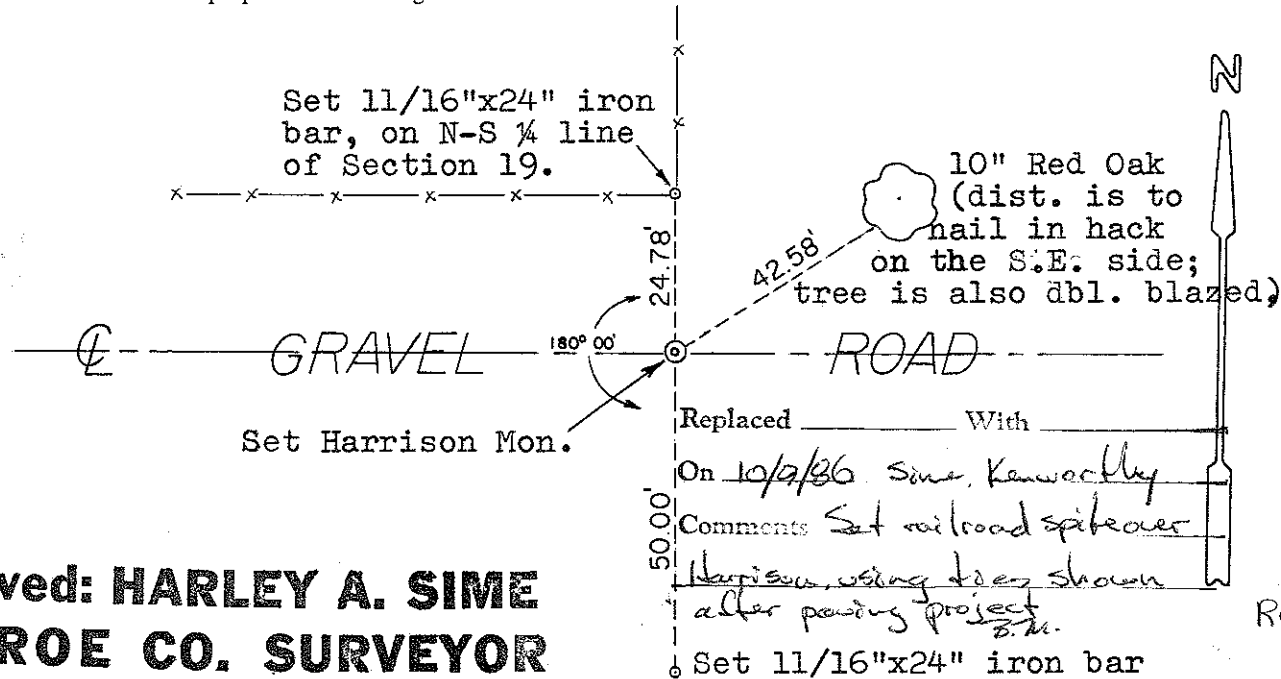
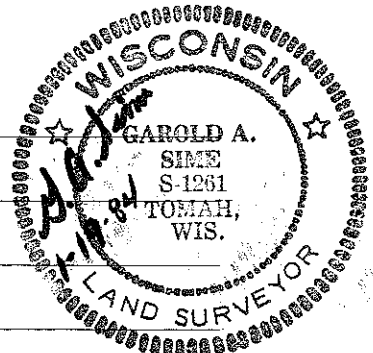
Deputy County Surveyor  
Title

Description of corner and witness monuments, references and accessories used to perpetuate the original or re-established location of this corner:

Witnesses to corner location:

Garold A. Sime

Dallas Wilhite



Approved: **HARLEY A. SIME**  
**MONROE CO. SURVEYOR**

WISCONSIN  
Replaced 5-19-87  
PLACED  
COUNTY SURVEYOR'S  
SIGN

SURVEY CONTROL ORDER

Horizontal \_\_\_\_\_  
Vertical \_\_\_\_\_

WISCONSIN COORDINATE SYSTEM

Corner	East (X)	North (Y)	Elevation (Z)	Zone
Control Sta. Name				

~~City~~ Village of Town of Byron  
County of Monroe

COUNTY SURVEYOR FORM NO. 1