

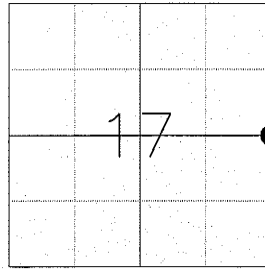
U.S. PUBLIC LAND SURVEY MONUMENT RECORD MONROE COUNTY, WISCONSIN.

IN ACCORDANCE WITH WISCONSIN ADMINISTRATIVE CODE, CHAPTER A-E 7.08 (3) (A) - (I)

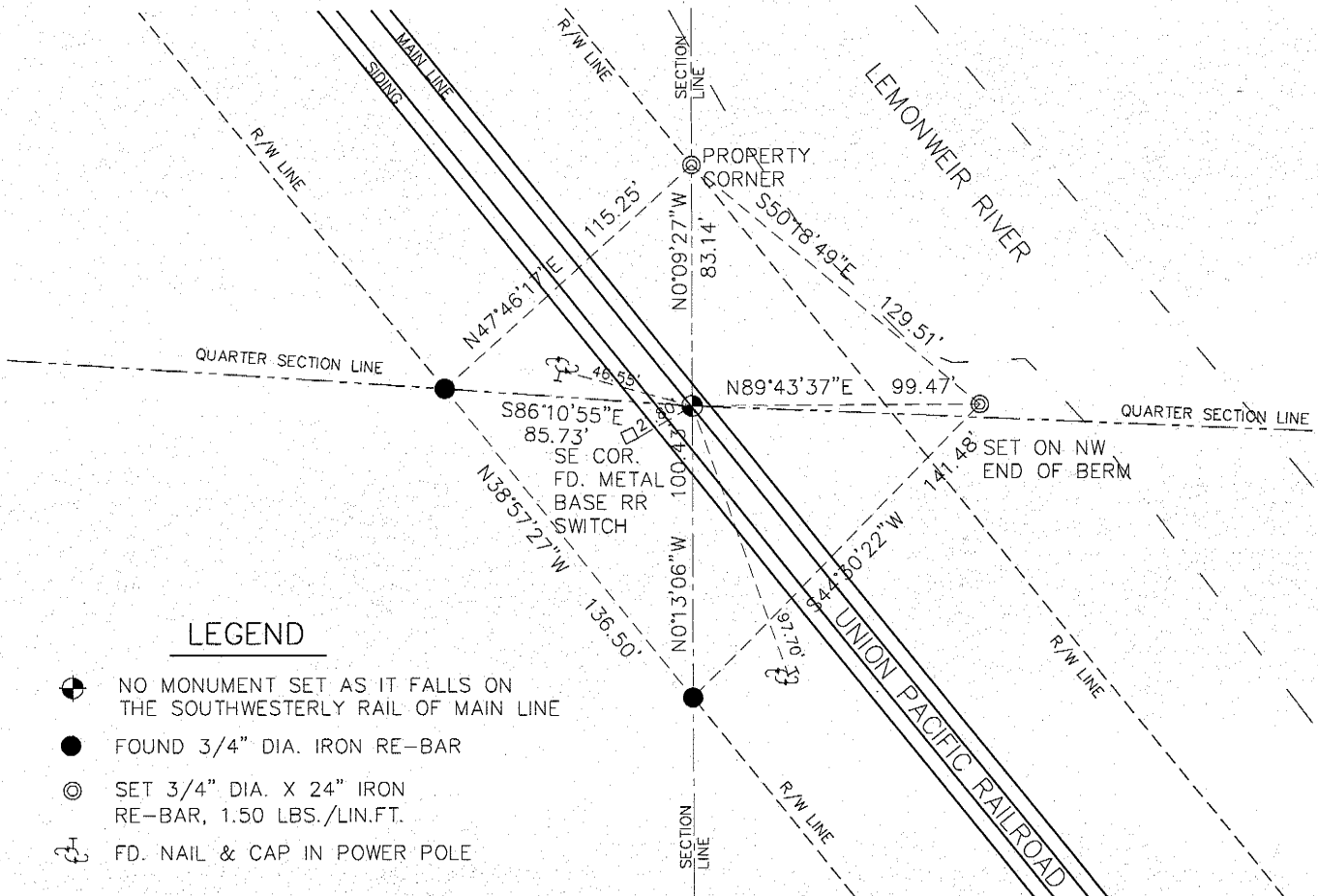
LOCATION: (A) THE IDENTITY OF THE CORNER, AS REFERENCED TO THE U.S. PUBLIC LAND SURVEY SYSTEM.

SECTION 17 - TOWN 18N - RANGE 1E

TOWNSHIP OF BYRON
 TYPE OF CORNER E 1/4 CORNER
 TYPE OF MONUMENT NO MONUMENT-FALLS ON RAIL
 HORIZONTAL DATUM MONROE CO. COORDINATES
 NORTHING / LATITUDE 413,090.44
 EASTING / LONGITUDE 736,428.80



PLAN VIEW: (C) REFERENCE TO AT LEAST 4 WITNESS MONUMENTS. WITNESS MONUMENTS SHALL BE CONCRETE, NATURAL STONE, IRON, BEARING TREES OR OTHER EQUALLY DURABLE MATERIAL, EXCEPT WOOD OTHER THAN BEARING TREES; (D) A PLAN VIEW DEPICTING THE RELEVANT MONUMENTS AND REFERENCE TIES WHICH ARE SUFFICIENT IN DETAIL TO ENABLE ACCURATE RELOCATION OF THE CORNER MONUMENT IF THE CORNER MONUMENT IS DISTURBED; (E) A DESCRIPTION OF ANY MATERIAL DISCREPANCY BETWEEN THE LOCATION OF THE CORNER AS RESTORED OR REESTABLISHED AND THE LOCATION OF THAT CORNER AS PREVIOUSLY RESTORED OR REESTABLISHED;



LEGEND

- ⊕ NO MONUMENT SET AS IT FALLS ON THE SOUTHWESTERLY RAIL OF MAIN LINE
- FOUND 3/4" DIA. IRON RE-BAR
- ⊙ SET 3/4" DIA. X 24" IRON RE-BAR, 1.50 LBS./LIN.FT.
- ⚡ FD. NAIL & CAP IN POWER POLE

SURVEYOR'S CERTIFICATE: CHAPTER 7.08 (3) (I)

THE UNDERSIGNED HEREBY CERTIFIES THAT THE U.S. PUBLIC LAND SURVEY MONUMENT RECORD SHOWN WAS DETERMINED BY THEM OR UNDER THEIR DIRECTION AND IS CORRECT TO THE BEST OF THEIR KNOWLEDGE AND BELIEF.



Mark T. Krizan
 WISCONSIN REGISTERED LAND SURVEYOR

3-25-11
 DATE CERTIFIED

U.S. PUBLIC LAND SURVEY MONUMENT RECORD MONROE COUNTY, WISCONSIN.

IN ACCORDANCE WITH WISCONSIN ADMINISTRATIVE CODE, CHAPTER A-E 7.08 (3) (A) - (I)

RECOVERY PROCEDURES:

- (B) A DESCRIPTION OF ANY RECORD EVIDENCE, MONUMENT EVIDENCE, OCCUPATIONAL EVIDENCE, TESTIMONIAL EVIDENCE OR ANY OTHER MATERIAL EVIDENCE CONSIDERED BY THE SURVEYOR, AND WHETHER THE MONUMENT WAS FOUND OR PLACED;

FOUND THREE OF THE FOUR TIES FROM MONUMENT RECORD SHEET BY RONALD D. PARISH DATED JUNE 13, 1988. PULLED RECORDED DISTANCES TO A POINT AND DID NOT FIND THE ROD ONE FOOT SOUTHWEST OF THE ACTUAL CORNER LOCATION, AS CALLED FOR. THE ACTUAL LOCATION OF THE CORNER MATCHES THE COORDINATE VALUE GIVEN BY COUNTY SURVEYOR. SET FOUR NEW TIES AS SHOWN.

- (F) WHETHER THE CORNER WAS RESTORED THROUGH ACCEPTANCE OF AN OBLITERATED EVIDENCE LOCATION OR A FOUND PERPETUATED LOCATION;

FOUND. PERPETUATED LOCATION

- (G) WHETHER THE CORNER WAS REESTABLISHED THROUGH LOST-CORNER PROPORTIONATE METHODS;

NO

- (H) THE DIRECTIONS AND DISTANCES TO OTHER PUBLIC LAND SURVEY CORNERS WHICH WERE USED AS EVIDENCE OR USED FOR PROPORTIONING IN DETERMINING THE CORNER LOCATION;

N/A

SURVEYOR'S CERTIFICATE: CHAPTER 7.08 (3) (I)



THE UNDERSIGNED HEREBY CERTIFIES THAT THE U.S. PUBLIC LAND SURVEY MONUMENT RECORD SHOWN WAS DETERMINED BY THEM OR UNDER THEIR DIRECTION AND IS CORRECT TO THE BEST OF THEIR KNOWLEDGE AND BELIEF.

Mark T. Krizan
WISCONSIN REGISTERED LAND SURVEYOR

3-25-11
DATE CERTIFIED