

70

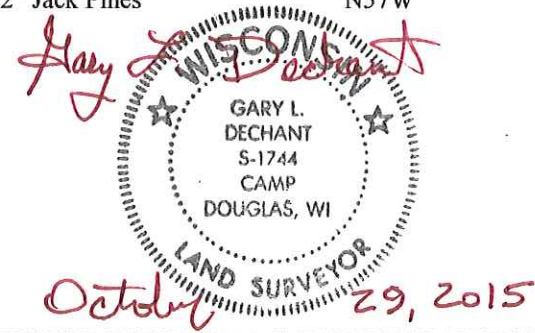
**U.S. PUBLIC LAND CORNER
MAINTENANCE**

Corner ID : S1/4 Sec.17, T18N-R1E
41801170020

<u>DATE</u>	<u>CREW</u>	<u>MONUMENT TYPE -----</u>
September 16, 2015	Zachariah P. Dechant Gary L. Dechant	Existing Harrison intact in north-south shrubbery, 80' south of center line STH "21". Set survey sign 1' south.

References:

	<u>Bearing</u>	<u>Distance</u>
1) Set 3/4"x24" round iron bar, down 6", 9' west 18" Red Pine	N66E	25.46'
2) Set 3/4"x24" round iron bar, down 6"	S12E	18.23'
3) Set 3/4"x24" round iron bar, down 6", 3' east 10" Double White Oak	S31W	18.85'
4) Set 3/4"x24" round iron bar, down 6", 2' east of two 12" Jack Pines	N57W	19.77'



I, Bryan H. Meyer, do hereby certify that on the 25th day of August 19 83, I found (evidence) ~~no evidence~~ of the North 1/4 corner of Section 20, T 18 N, R 1 E Fourth Principal Meridian, and I re-established said corner according to the Wisconsin Statutes as shown and described hereon.

Dated this 4th day of Jan. 1984.

Bryan H. Meyer
Deputy County Surveyor
Title

History of corner establishment since Original Government Survey

Nothing Recorded.

See Reverse Side For Maintenance

Description of corner evidence found:

I set this corner on line between the Northeast and the Northwest corners of Section 20, in the occupied North-South 1/4 line.



COUNTY SURVEYOR FORM NO. 1

Description of corner and witness monuments, references and accessories used to perpetuate the original or re-established location of this corner:

Crew: Meyer, Wilhite
Date: August 25, 1983 - 1:15 P.M.
Weather: P. Cloudy, Humid, 80°+
Witnesses to corner location:

Bryan H. Meyer

Dallas Wilhite

APPROVED: Harley A. Sime
Monroe County Surveyor

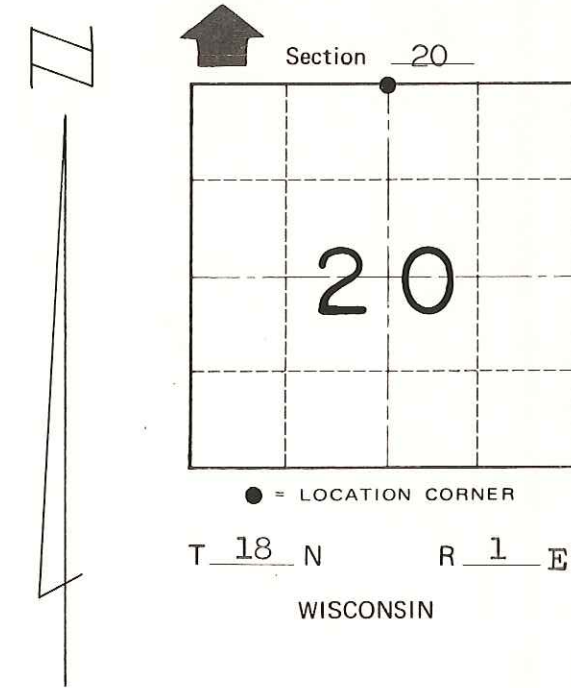
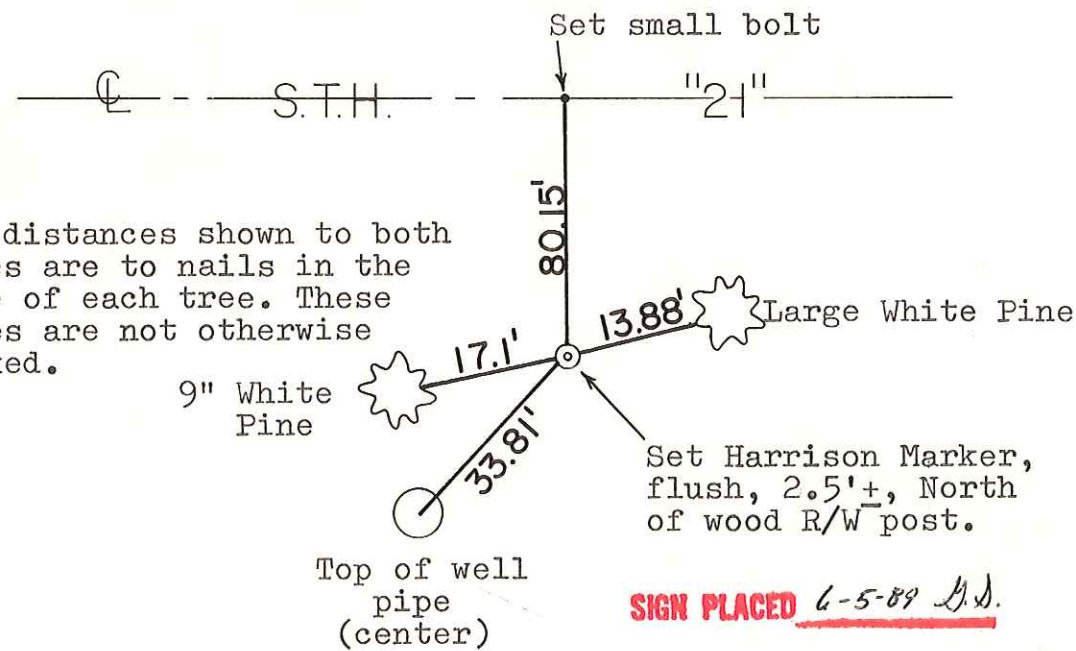
SURVEY CONTROL ORDER

Horizontal	_____
Vertical	_____

WISCONSIN COORDINATE SYSTEM

Corner	East (X)	North (Y)	Elevation (Z)	Zone
Control Sta. Name				

The distances shown to both trees are to nails in the side of each tree. These trees are not otherwise marked.



~~City, Village or~~ Town of Byron
County of Monroe