

57

**U.S. PUBLIC LAND CORNER
MAINTENANCE**

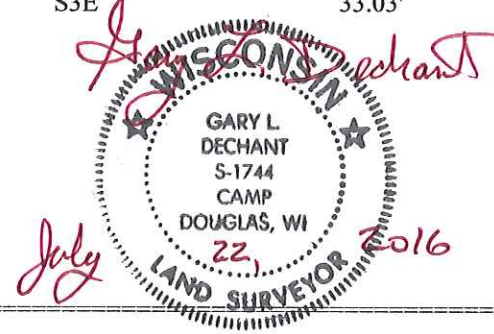
Corner ID : E1/4 Sec. 16, T18N-R1E
41801162000

<u>DATE</u>	<u>CREW</u>	<u>MONUMENT TYPE -----</u>
July 6, 2016	Zachariah P.Dechant Gary L. Dechant	Existing 3/4" round iron bar 9' north of center Exodus Ave. Down 4", in line with fences north and south

References:

	<u>Bearing</u>	<u>Distance</u>
1) Set 3/4"x24" round iron bar, down 6", 6' south of middle of gate	N48E	42.21'
2) Set 3/4"x24" round iron bar, down 6", 5' SE power pole	S18E	53.90'
3) Set 3/4"x24" round iron bar, down 6", edge of pavement	S48W	64.36'
4) Set 3/4"x24" round iron bar, down 6", 34' east of vent of mound drain field	N18W	54.52'
5) Existing 3/4" iron bar in ditch	S3E	33.03'

E1/4 and reference monuments set on straight lines.



I, Harley A. Sime, do hereby certify that on the twelfth day of June 1980, I found (evidence) (~~no evidence~~) of the West 1/4 corner of Section 15, T 18 N, R 1 E Fourth Principal Meridian, and I re-established said corner according to the Wisconsin Statutes as shown and described hereon.

Dated this 25th day of Feb. 1981.

Harley A. Sime - R.L.S. 355

County Surveyor-Monroe County, Wisconsin.
Title

History of corner establishment since Original Government Survey

Duane Marten set this corner in August of 1969. Fred Zietlow used this corner in a December, 1970 survey. Duane Marten used the corner again in October of 1973.

Description of corner evidence found:

Found a 3/4" iron bar used in previous survey work.

See Reverse Side For Maintenance

COUNTY SURVEYOR FORM NO. 1

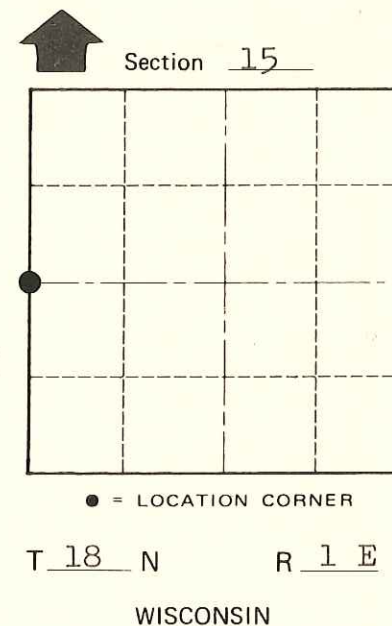
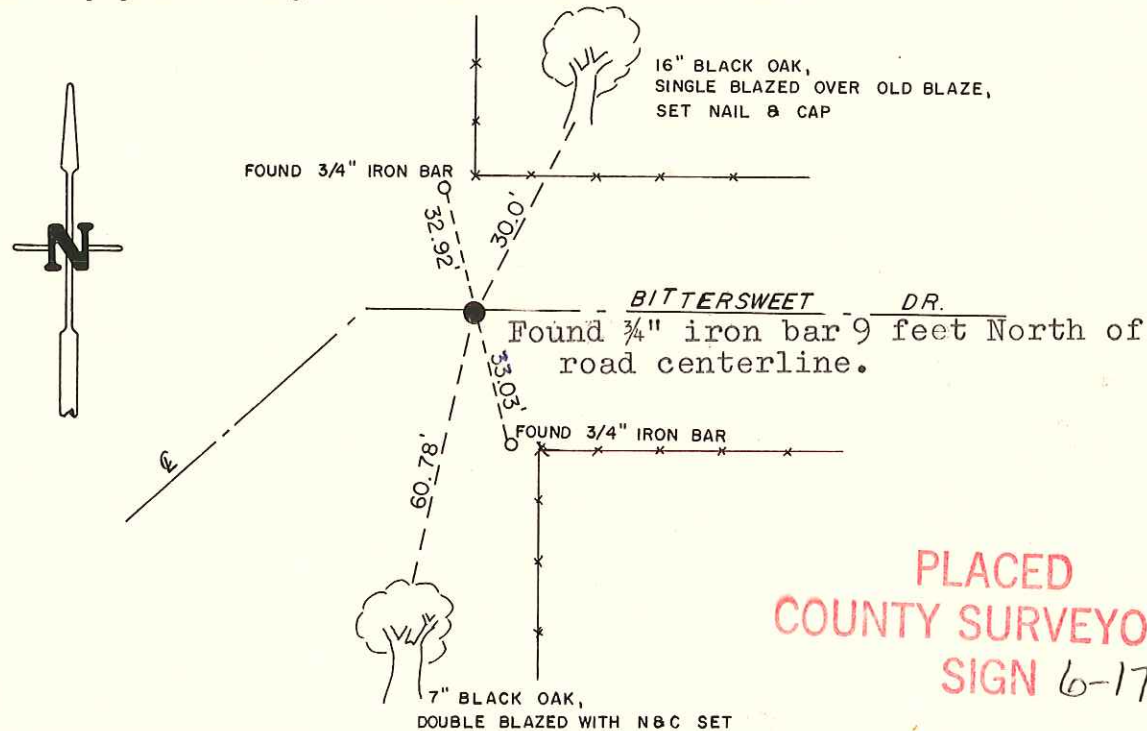
Description of corner and witness monuments, references and accessories used to perpetuate the original or re-established location of this corner:

Witnesses to corner location:

Scott Sowers

Todd Tormoen

**Approved: HARLEY A. SIME
MONROE CO. SURVEYOR**



PLACED COUNTY SURVEYOR'S SIGN 6-17-87

SURVEY CONTROL ORDER

Horizontal	_____
Vertical	_____

WISCONSIN COORDINATE SYSTEM

Corner	East (X)	North (Y)	Elevation (Z)	Zone
Control Sta. Name				

~~City, Village or~~ Town of Byron
County of Monroe
Wisconsin