

#68

**U.S. PUBLIC LAND CORNER
MAINTENANCE**

Corner ID : S1/4 Sec. 16, T18N-R1E

41801160020

<u>DATE</u>	<u>CREW</u>	<u>MONUMENT TYPE</u>
October 19, 2017	Zachariah P.Dechant Gary L. Dechant	Existing cotton gin spike over Harrison 14' south of STH "21" Railroad St/Copper Road intersection.

<u>References:</u>	<u>Bearing</u>	<u>Distance</u>
1) Set 3/4"x24" iron pipe, down 8", 55' east of Copper Road & 51' north "21"	NE	91.27'
2) Set 3/4"x24" iron pipe, down 4", 24' north of NW corner of house at 110 Railroad St.	SE	81.93'
3) Set 3/4"x24" iron pipe, down 4", 8' south of telephone ped NE'ly of lilacs	SW	45.95'
4) Set 3/4"x24" iron pipe, 56' north of "21" & 82' west of Copper Road	NW	105.09'

Harrison and reference markers set on straight lines.



I, William C. Jung, do hereby certify that on the 29th day of January 1979, I found (evidence) (~~no evidence~~) of the N $\frac{1}{4}$ corner of Section 21, T 18 N, R 1 E Fourth Principal Meridian, and I re-established said corner according to the Wisconsin Statutes as shown and described hereon.

Dated this 20th day of Jan. 1981.

William C. Jung

William C. Jung, R.L.S. 1323
Title

History of corner establishment since Original Government Survey

This corner is shown on the Plat of Wyeville in 1911. Also shown on previous C.S.M.'s. Schroeder also refers to this corner in the Plat of Mrs. M. Stenholt Nelson's First Addition to the Village of Wyeville. (1923)

Description of corner evidence found:

Found a R.R. spike over a pipe. This marker had been used in several previous surveys. Removed the R.R. spike and iron pipe and replaced them with a Harrison on March 27, 1980. Also found a bolt and iron bar while digging; left them in on the SE side of the Harrison.

See Reverse Side For Maintenance

COUNTY SURVEYOR FORM NO. 1

Description of corner and witness monuments, references and accessories used to perpetuate the original or re-established location of this corner:

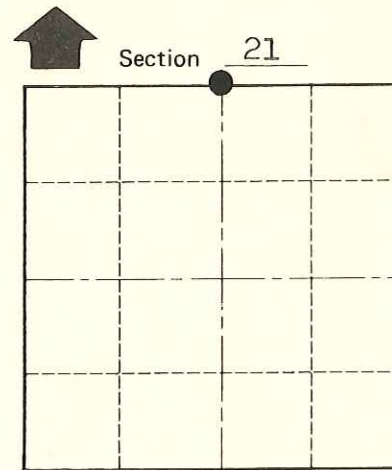
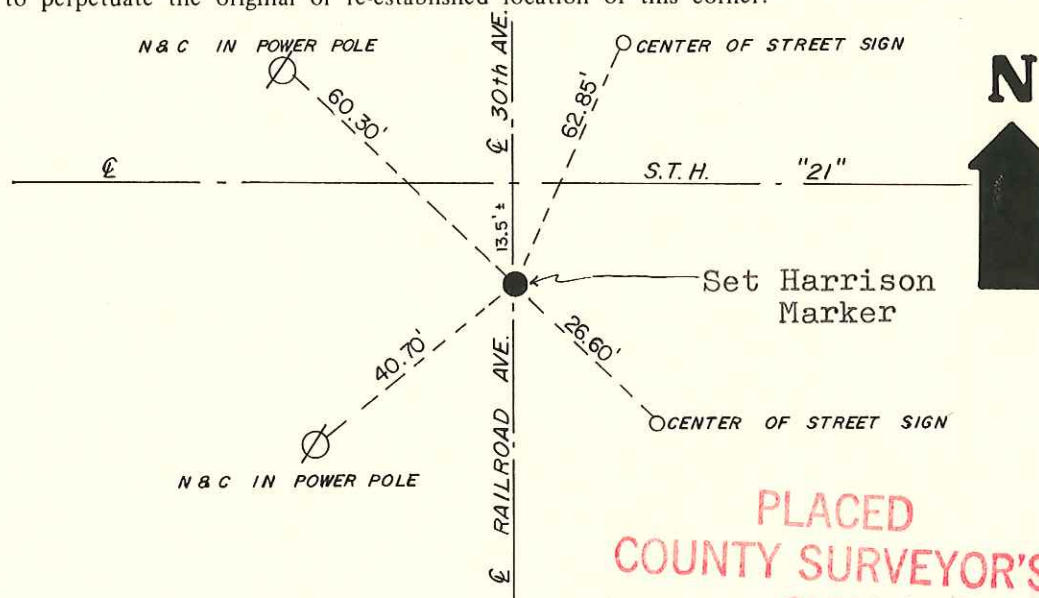
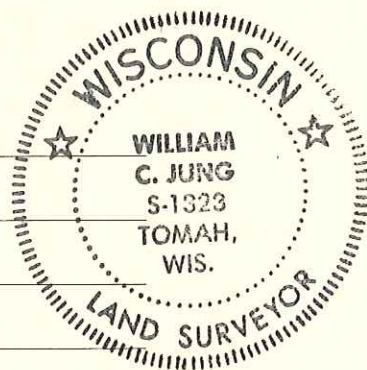
Witnesses to corner location:

W. Jung

G. Dechant

M. Scott Sowers

C. Pietz



● = LOCATION CORNER

T 18 N R 1 E
WISCONSIN

PLACED COUNTY SURVEYOR'S SIGN 6-17-87

**Approved: HARLEY A. SIME
MONROE CO. SURVEYOR**

SURVEY CONTROL ORDER

Horizontal	_____
Vertical	_____

WISCONSIN COORDINATE SYSTEM

Corner	East (X)	North (Y)	Elevation (Z)	Zone
Control Sta. Name				

~~City~~, Village or ~~Town~~ Wyeville
County of Monroe