

58

**U.S. PUBLIC LAND CORNER
MAINTENANCE**

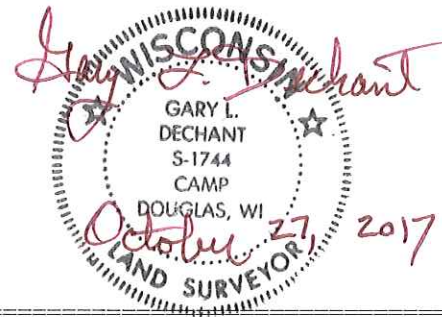
Corner ID : E1/4 Sec. 15, T18N-R1E
4180152000

<u>FIELD DATE</u>	<u>CREW</u>	<u>MONUMENT TYPE -----</u>
September 20, 2017	Zachariah P. Dechant Gary L. Dechant	Existing Railroad spike in 1" iron pipe, down 3" 2' west of Dragonfly Road, 24' south of center line Exodus Ave

References:

	<u>Bearing</u>	<u>Distance</u>
1) Existing 3/4" round iron bar, set survey sign 1' east	East	38.68
2) Set 3/4" x 24" round iron bar infield, down 12"	S47W	76.94'
3) Set 3/4"x24" round iron bar, down 6"	N29W	98.11'
4) Set 3/4"x24" round iron bar, 7' SW 10" Maple, down 6"	N47E	57.65'

Corner and reference markers 2 & 4 set on a straight line.



I, Harley A. Sime, do hereby certify that on the 4th day of June 19 80, I found (evidence) (~~was evidence~~) of the W¹/₄ corner of Section 14, T 18 N, R 1 E Fourth Principal Meridian, and I re-established said corner according to the Wisconsin Statutes as shown and described hereon.

Dated this 26th day of Feb. 19 81.

Harley A. Sime, R.L.S. 355
County Surveyor
Title

History of corner establishment since Original Government Survey

Schroeder (?) was at this corner in December of 1889. Harley Sime set an iron pipe at this corner in 1960, equidistant between the section corners. He again used this corner in 1961. Duane Marten used this iron pipe in his August, 1969 survey. Feddersen used this iron pipe in a July, 1979 survey.

Description of corner evidence found:

Found an iron pipe used in previous survey work.

**See Reverse Side
For Maintenance**

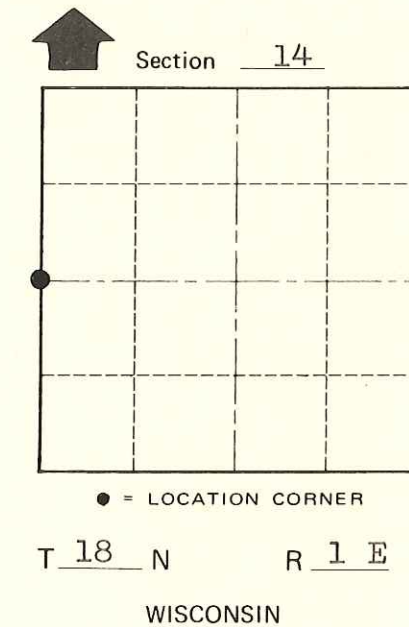
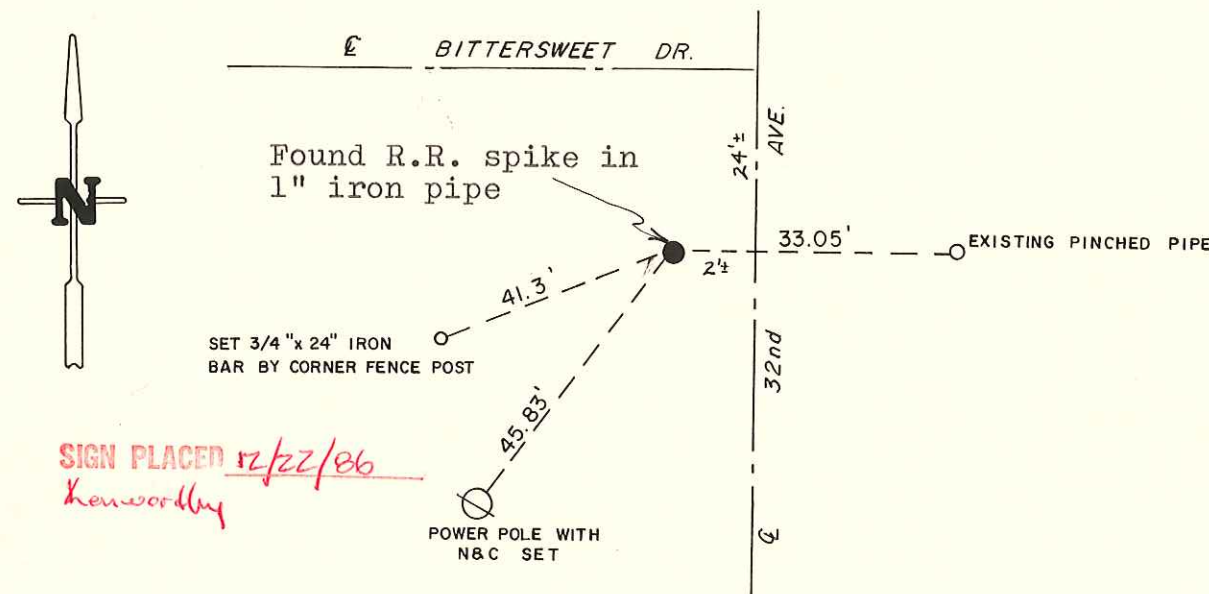
COUNTY SURVEYOR FORM NO. 1

Description of corner and witness monuments, references and accessories used to perpetuate the original or re-established location of this corner:

Witnesses to corner location:

- M. Scott Sowers
- T. Tormoen
- C. Dade

**Approved: HARLEY A. SIME
MONROE CO. SURVEYOR**



SURVEY CONTROL ORDER

Horizontal	_____
Vertical	_____

WISCONSIN COORDINATE SYSTEM

Corner	East (X)	North (Y)	Elevation (Z)	Zone
Control Sta. Name				

~~City, Village or~~ Town Byron
 County of Monroe