

# CERTIFIED LAND CORNER

No. 59

Corner 41801142000

## CERTIFICATE

I, Bryan H. Meyer, do hereby certify that on the 4th day of January, 2006, I found (evidence) ~~(no evidence)~~ of the East 1/4 corner of Section 14, T 18 N, R 1 E Fourth principle Meridian, and I re-established said corner according to the Wisconsin Statutes as shown and described hereon.

Dated this 18th day of February

Bryan H. Meyer  
 \_\_\_\_\_  
 Registered Land Surveyor

Title

Description of corner and witness monuments, references and accessories used to perpetuate the original or re-established location of this corner.

Witnesses to corner location:

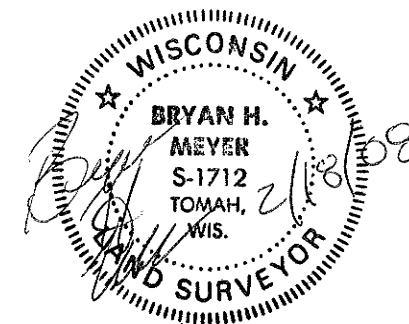
Bryan H. Meyer  
 \_\_\_\_\_  
Jerry Hibbard  
 \_\_\_\_\_  
 \_\_\_\_\_  
 \_\_\_\_\_

## History of corner establishment since Original Government Survey

Schoeder was at this corner in December of 1889. Duane Marten set an iron bar at this corner in October of 1973. This corner fits the East line of the Section very well. Larry Feddersen used this iron bar in a July 1979 survey. Feddersen again used this corner in November of 1998. Gary Dechant used this corner in July of 2003.

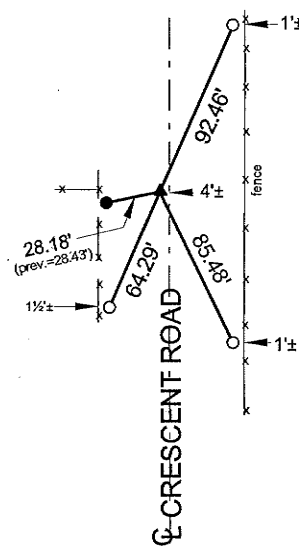
### UPDATE:

The County Surveyor's Office was notified by the Town of Byron that a road resurfacing project was to take place. This corner was referenced out. Following resurfacing, this corner was reset with a railroad spike and new ties were taken as shown.

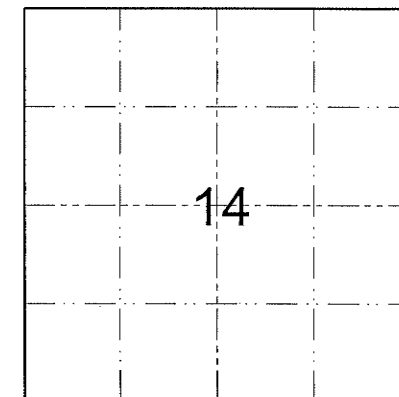
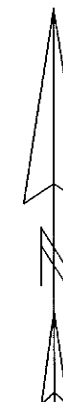


Bryan H. Meyer, Registered Land Surveyor  
 H. A. Sime and Associates, P. O. Box 50  
 Tomah, Wisconsin 54660 \* Phone: 608-372-7967

Section 14



- ▲ = Set railroad spike
- = Existing 3/4" iron bar
- = Set 3/4" x 18" round iron bar



O = Corner Location

T 18 N      R 1 E

WISCONSIN

### SURVEY CONTROL ORDER

Horizontal
Vertical

### MONROE COUNTY COORDINATE SYSTEM

Corner	Northing	Easting	Elevation
41801142000			
Control Station Name			

~~City, Village or~~ Town of Byron

County of Monroe