

#64

**U.S. PUBLIC LAND CORNER
MAINTENANCE**

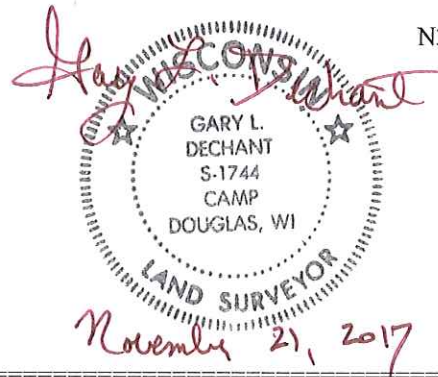
Corner ID : S1/4 Sec. 14, T18N-R1E

41801140020

<u>DATE</u>	<u>CREW</u>	<u>MONUMENT TYPE</u>
October 23, 2017	Zachariah P. Dechant Gary L. Dechant	Existing Harrison top broke off, down 6". 69' north center line of STH "21" & 12' east center line of driveway fire no. 32508 2' west of fence corner. Set sign at fence corner.

References:

	<u>Bearing</u>	<u>Distance</u>
1) Set 3/4"x24" round iron bar, down 10"	N30E	15.80'
2) Set 3/4"x24" round iron bar, down 8"	S86E	21.71'
3) Set 3/4"x24" round iron bar, down 6" 11' west of driveway	West	23.85
4) Set 3/4"x24" round iron bar, down 6"	N36W	47.77'



I, Harley A. Sime, do hereby certify that on the twenty-fifth day of March 1982, I found ~~evidence~~ (no evidence) of the North 1/4 corner of Section 23, T 18 N, R 1 E Fourth Principal Meridian, and I re-established said corner according to the Wisconsin Statutes as shown and described hereon.

Dated this 31st day of March 1982.

Harley A. Sime - R.L.S. 355

Monroe County Surveyor

History of corner establishment since Original Government Survey

Schroeder was here in December of 1889. Surveyors for the Milwaukee, Sparta & Northwestern Railway Company were here in January of 1910.

Description of corner evidence found:

Set Harrison on line between the N.E. and N.W. corners of this section, and at proportionate distance as per 1910 railroad map. This point fits the projection of fences North and South.



See Reverse Side For Maintenance

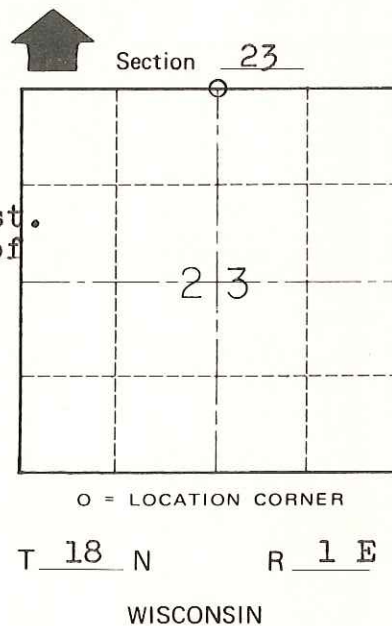
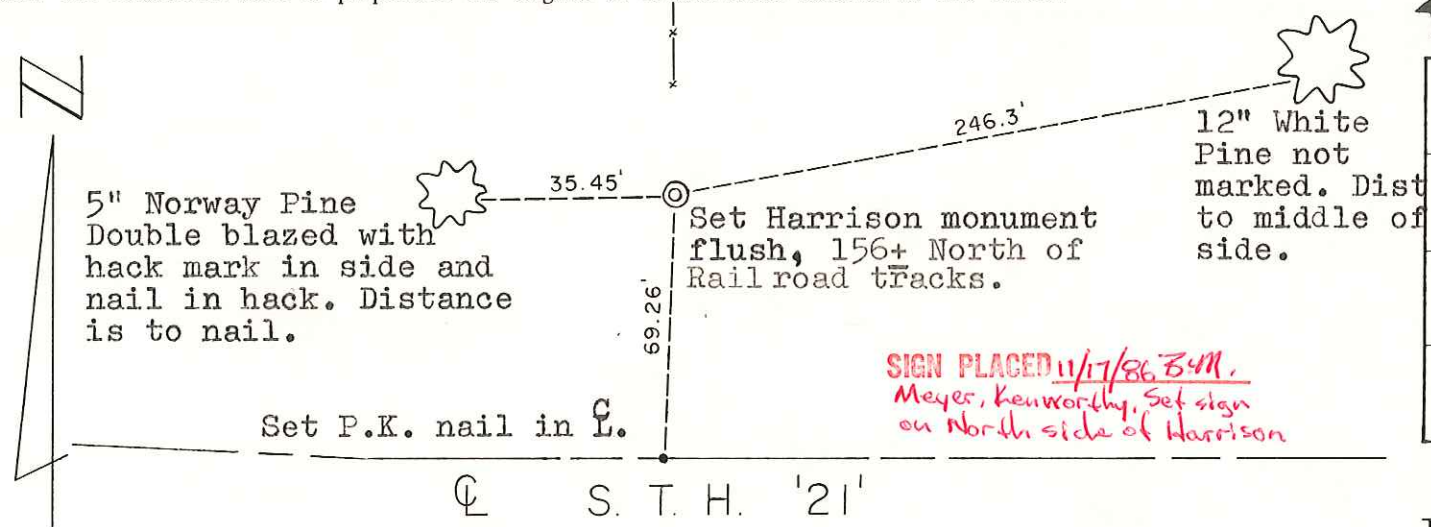
Approved: **HARLEY A. SIME**
MONROE CO. SURVEYOR

Description of corner and witness monuments, references and accessories used to perpetuate the original or re-established location of this corner:

Witnesses to corner location:

Bryan Meyer

Gary Dechant



SIGN PLACED 11/17/86 B.M. Meyer, Kenworthy. Set sign on North side of Harrison

SURVEY CONTROL ORDER

Horizontal	_____
Vertical	_____

RAILROAD TRACKS

WISCONSIN COORDINATE SYSTEM

Corner	East (X)	North (Y)	Elevation (Z)	Zone
Control Sta. Name				

~~City Village~~ Town of Byron
County of Monroe

COUNTY SURVEYOR FORM NO. 1