

# 55

**U.S. PUBLIC LAND CORNER  
MAINTENANCE**

**Corner ID :** E1/4 Sec. 18, T18N-R1E

**41801182000**

<u>FIELD DATE</u>	<u>CREW</u>	<u>MONUMENT TYPE -----</u>
September 7, 2017	Zachariah P.Dechant Gary L. Dechant	Existing gotten gin spike in center line STH "173" 77' north of driveway 9489 CTH "173"

References:

	<u>Bearing</u>	<u>Distance</u>
1) Set 3/4"x24" round iron bar, down 8"	N53E	61.11'
2) Existing monument east side of fence post	East	33.11"
3) Set 3/4"x24" round iron bar 3' east of 12" White Pine, down 6"	S59E	80.90'
4) Set 3/4"x24" round iron bar, 5' west of 18" White Pine	S53W	56.54'
5) Existing 1" round iron bar, steel post west	West	50.04'
6) Set 3/4"x24" round iron bar, 4'NW of 8" White Pine, 5' west of fence	N59W	68.01'

Cotton Gin Spike and reference markers 1& 4 and 3 & 6 set on straight lines.



I, William C. Jung, do hereby certify that on the 7<sup>th</sup> day of August 1981, I found (evidence) ~~(no evidence)~~ of the East 1/4 corner of Section 18, T 18 N, R 1 E, Fourth Principal Meridian, and I re-established said corner according to the Wisconsin Statutes as shown and described hereon.

Dated this 28<sup>th</sup> day of August 1981.

William C. Jung

Registered Land Surveyor

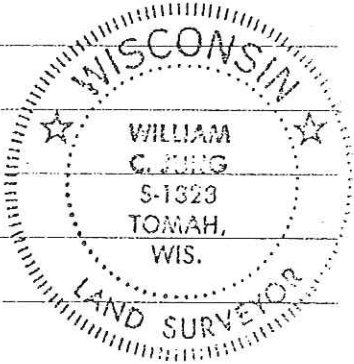
*William C. Jung*

Description of corner and witness monuments, references and accessories used to perpetuate the original or re-established location of this corner:

Witnesses to corner location:

G. Dechant

C. Pietz



SURVEY CONTROL ORDER

Horizontal	_____
Vertical	_____

Corner	East (X)	North (Y)	Elevation (Z)	Zone
Control Sta. Name				

History of original corner establishment:  
Fred Zietlow set an iron bar at this corner in July of 1970.

No. 55

Pg. 2

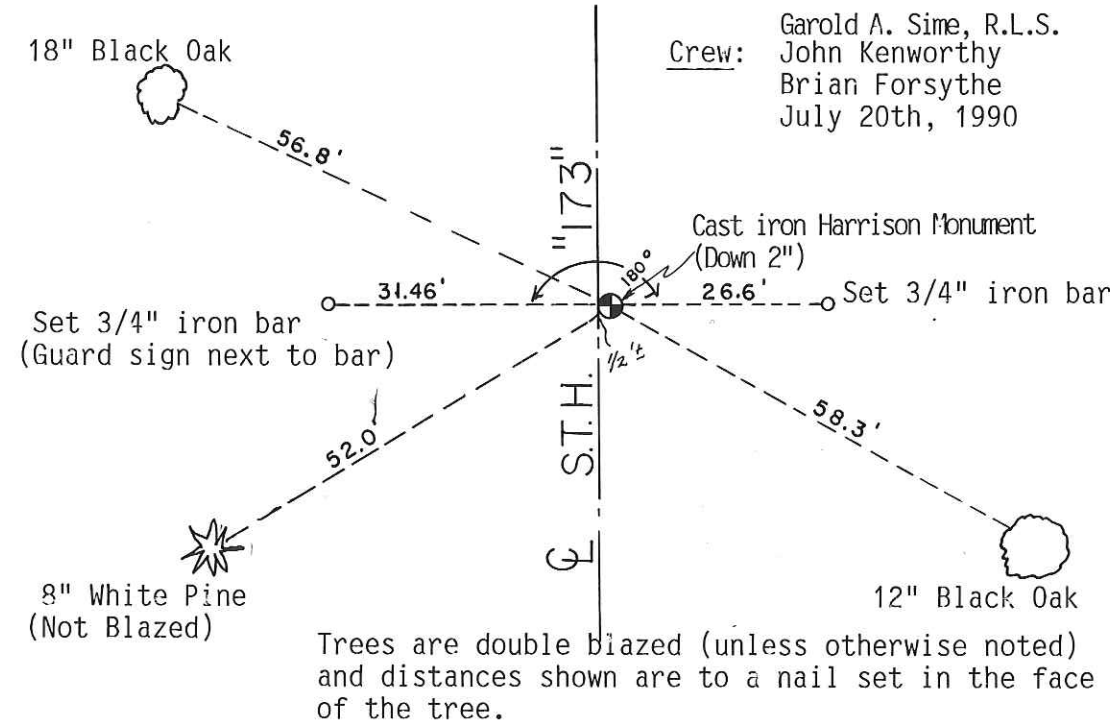
**See Reverse Side  
For Maintenance**

Description of corner evidence found:

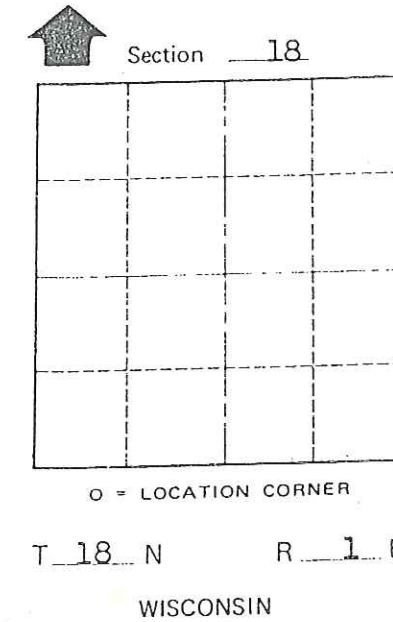
Found Zietlow's iron bar, removed it and set a Harrison marker about 25' ± North of an East-West fence.

UPDATE: Found Cast Iron Harrison Monument down 2". Obtained additional ties as shown below.

Approved: **HARLEY A. SIME**  
**MONROE CO. SURVEYOR**



Crew: Garold A. Sime, R.L.S.  
John Kenworthy  
Brian Forsythe  
July 20th, 1990



Section 18  
T 18 N R 1 E  
WISCONSIN

WISCONSIN COORDINATE SYSTEM

Corner	East (X)	North (Y)	Elevation (Z)	Zone
Control Sta. Name				

City, Village or Town Byron  
County of Monroe  
Wisconsin

COUNTY SURVEYOR FORM NO. 1

I, William C. Jung, do hereby certify that on the 7<sup>th</sup> day of August 1981, I found (evidence) ~~(no evidence)~~ of the East 1/4 corner of Section 18, T 18 N, R 1 E, Fourth Principal Meridian, and I re-established said corner according to the Wisconsin Statutes as shown and described hereon.

Dated this 28<sup>th</sup> day of August 1981.

William C. Jung

Registered Land Surveyor  
Title

*William C. Jung*

Description of corner and witness monuments, references and accessories used to perpetuate the original or re-established location of this corner:

Witnesses to corner location:

G. Dechant

C. Pietz



History of original corner establishment:  
Fred Zietlow set an iron bar at this corner in July of 1970.

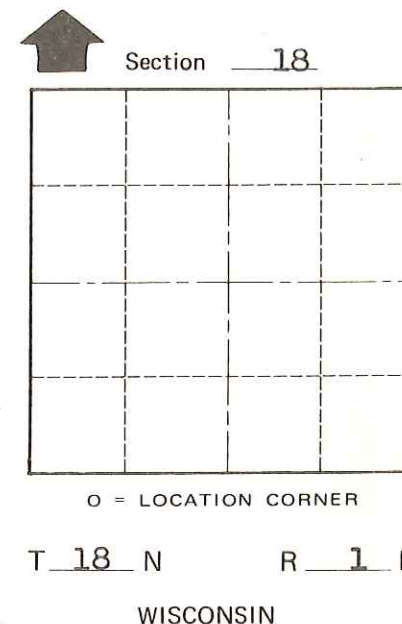
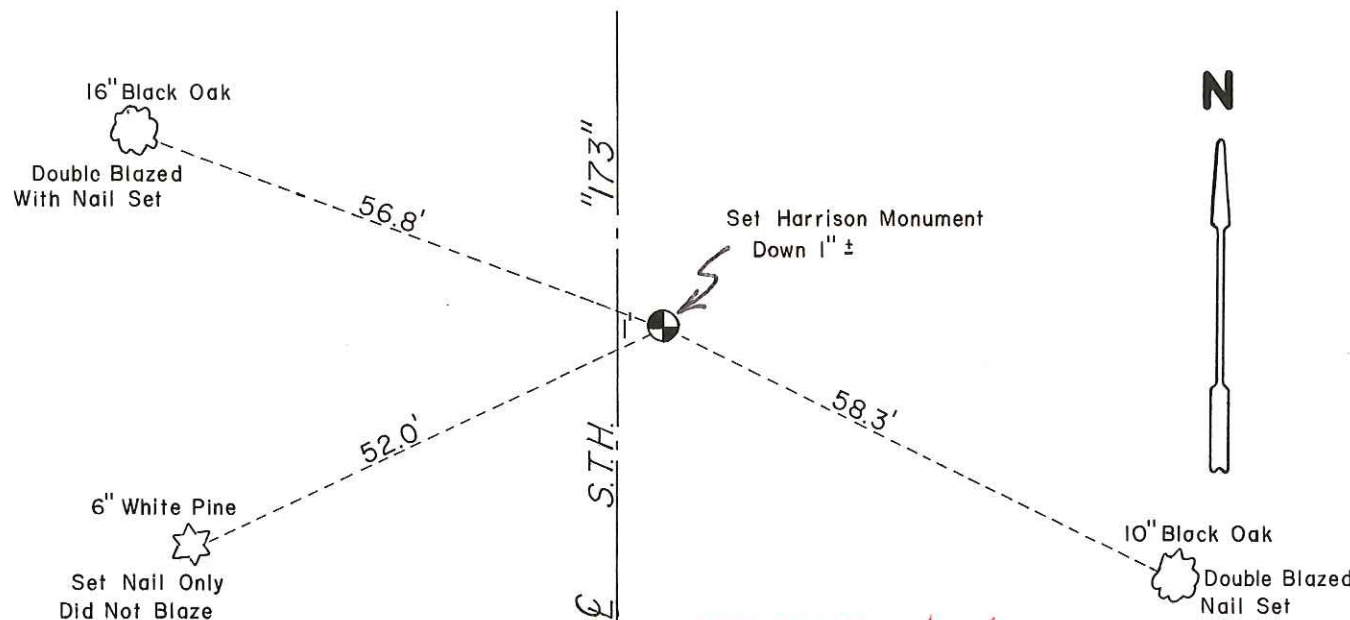
Description of corner evidence found:

Found Zietlow's iron bar, removed it and set a Harrison marker about 25' ± North of an East-West fence.

**See Reverse Side For Maintenance**

Approved: **HARLEY A. SIME**  
**MONROE CO. SURVEYOR**

COUNTY SURVEYOR FORM NO. 1



SURVEY CONTROL ORDER

Horizontal	_____
Vertical	_____

WISCONSIN COORDINATE SYSTEM

Corner	East (X)	North (Y)	Elevation (Z)	Zone
Control Sta. Name				

SIGN PLACED 12/20/86  
Kenworthy

~~City, Village or~~ Town Byron  
County of Monroe  
Wisconsin