

72

**U.S. PUBLIC LAND CORNER
MAINTENANCE**

Corner ID : S1/4 Sec.18, T18N-R1E

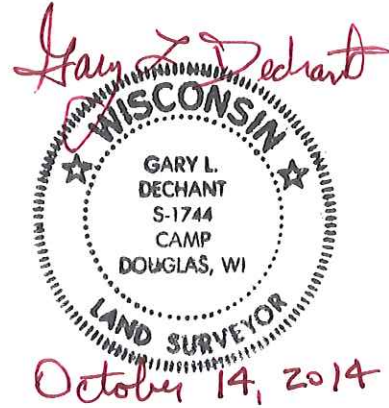
41801180020

<u>DATE</u>	<u>CREW</u>	<u>MONUMENT TYPE -----</u>
October 14, 2014	Zachariah P.Dechant Gary L. Dechant	Existing 1/4" round iron bar, 66' south of STH "21" 130' west of driveway fire no. 28477 STH "21" Survey sign 1' north

References:

	<u>Bearing</u>	<u>Distance</u>
1) Set 3/4"x24" square iron bar down 10", 42' west of NW corner chain link fence	S29E	96.28'
2) Set 3/4"x24" square iron bar, down 10", 11' south of telephone ped	S29E	49.54'
3) Set 3/4"x24" square iron bar, down 10" at corner of cedar trees	S16W	110.43'
4) Set 3/4"x24" square iron bar, down 10",	S16W	56.59'

1/4" iron bar and reference markers set on straight lines.



I, Harley A. Sime, do hereby certify that on the 13th day of March 19 81, I found (evidence) ~~(no evidence)~~ of the South 1/4 corner of Section 18, T 18 N, R 1 E Fourth Principal Meridian, and I re-established said corner according to the Wisconsin Statutes as shown and described hereon.

Dated this 16th day of March 1981.

**Approved: HARLEY A. SIME
MONROE CO. SURVEYOR**

History of corner establishment since Original Government Survey

Fred Zietlow set a 1 1/4"x30" iron bar at this corner in 1970. He again used this corner in a survey of March, 1973. Duane Marten used this corner in a survey of June, 1973.

Description of corner evidence found:

Found the corner of record.

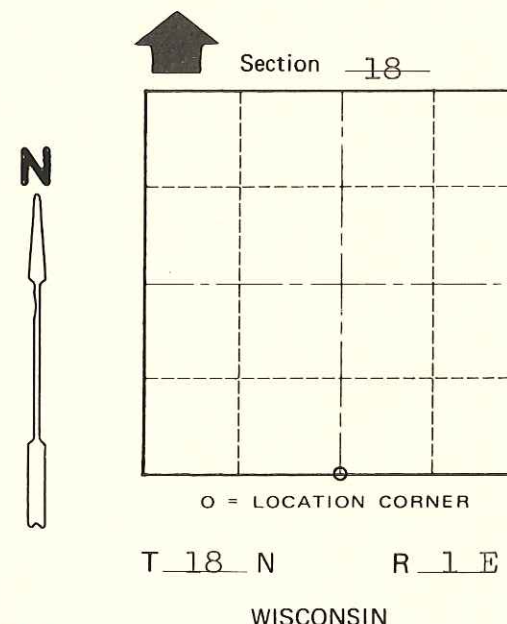
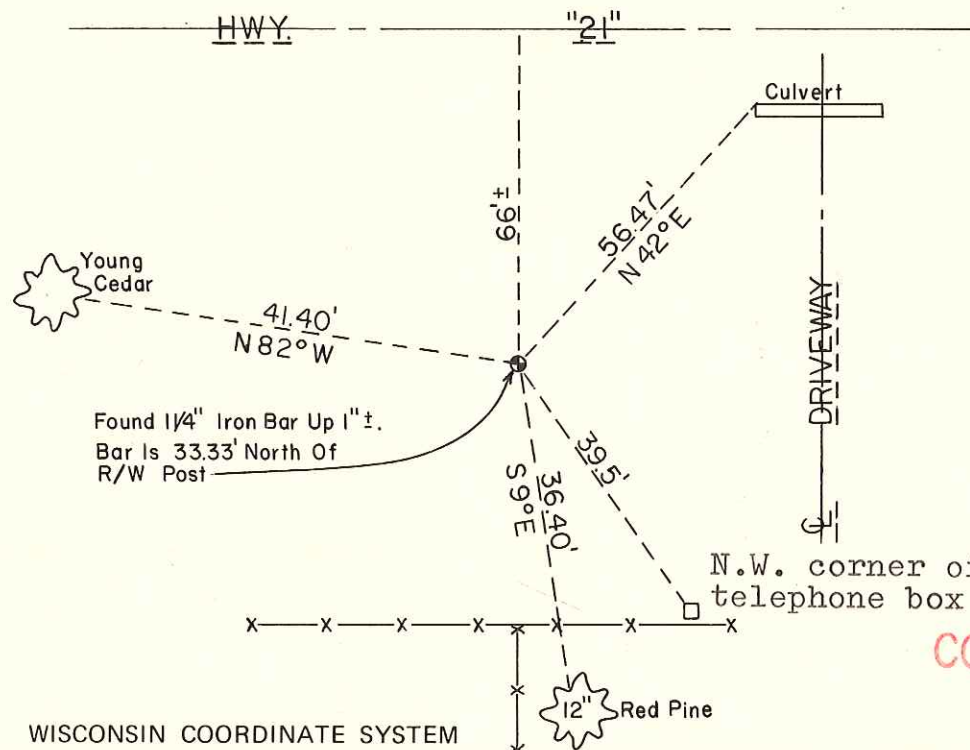
**See Reverse Side
For Maintenance**

COUNTY SURVEYOR FORM NO. 1

Description of corner and witness monuments, references and accessories used to perpetuate the original or re-established location of this corner:

Witnesses to corner location:

Dechant
Meyer



SURVEY CONTROL ORDER

Horizontal	_____
Vertical	_____

Corner	East (X)	North (Y)	Elevation (Z)	Zone
Control Sta. Name				

**PLACED
COUNTY SURVEYOR'S
SIGN 6-12-87**

~~City/Village~~ Town Byron
County of Monroe
Wisconsin