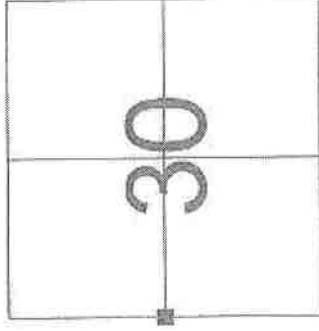


JUNEAU COUNTY SURVEY MONUMENT RECORD

CORNER NO. 94
SECTION 30
TOWN 18 N
RANGE 2 E.



LOCATION

TYPE OF MONUMENT: 2-1/2" DIAMETER IRON PIPE FOUND UP 36" +/-

JUNEAU COUNTY COORDINATES NAD 83/91

NORTHING: 232,126.76

EASTING: 402,723.70

■ = CORNER MONUMENT RESTORED

BASIS FOR MONUMENT LOCATION
(USE REVERSE SIDE IF NECESSARY)

SHOW INFO SUCH AS: HISTORY OF CORNER, WITH REFERENCE TO VOLUME AND PAGE DATES, SURVEYOR, EXACT DESCRIPTION OF MONUMENT PLACED OR FOUND, IF LOCATION COMPUTED, BY TAPED OR EDM TRAVERSE, LANDOWNER REMARKS, ETC.

2-1/2" DIAMETER IRON PIPE FOUND AS PER TIE SHEET
DATED 6/4/1982, BY BRYAN MEYER.

LEGEND

- = 2-1/2" DIAMETER IRON PIPE FOUND UP 36" +/-
- X = GOVERNMENT SIGN SET
- = 3/4" X 24" IRON ROD SET

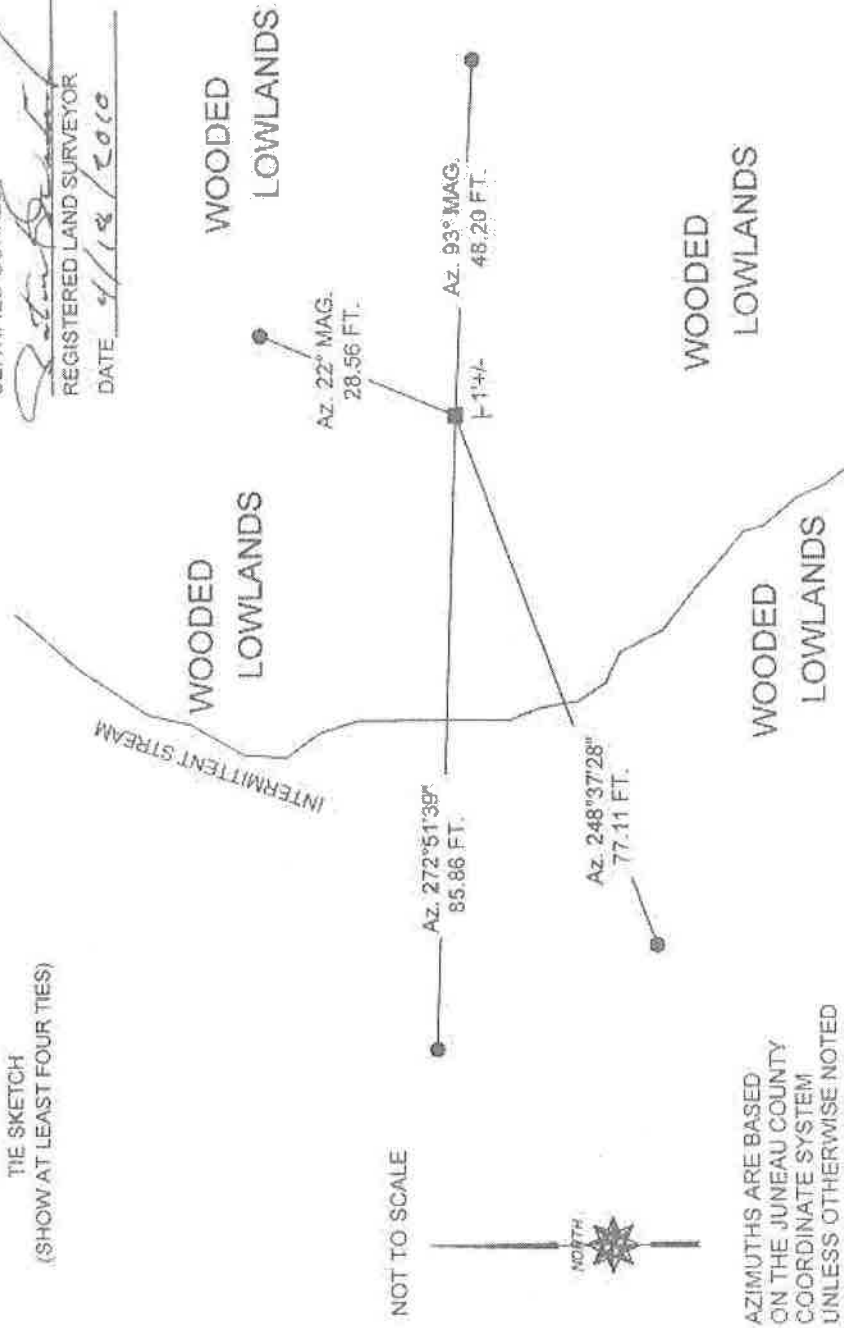
THE SKETCH
(SHOW AT LEAST FOUR TIES)



CERTIFIED CORRECT

REGISTERED LAND SURVEYOR

DATE 4/18/2010



AZIMUTHS ARE BASED
ON THE JUNEAU COUNTY
COORDINATE SYSTEM
UNLESS OTHERWISE NOTED

CERTIFICATE

I, Harley A. Sime do hereby certify that on the twenty-first day of May 1982, I found ~~evidence~~ (no evidence) of the East $\frac{1}{4}$ corner of Section 25, T 18 N, R 1E Fourth Principal Meridian, and I re-established said corner according to the Wisconsin Statutes as shown and described hereon.

Dated this 4th day of June 1982.

Harley A. Sime - R. L. S. 355

County Surveyor, Monroe County

Approved: HARLEY A. SIME
MONROE CO. SURVEYOR

COUNTY SURVEYOR FORM NO. 1

Description of corner and witness monuments, references and accessories used to perpetuate the original or re-established location of this corner:

Witnesses to corner location:

Bryan Meyer - Crew Chief

Gary Dechant

SURVEY CONTROL ORDER

Horizontal	_____
Vertical	_____

Corner	East (X)	North (Y)	Elevation (Z)	Zone
Control Sta. Name				

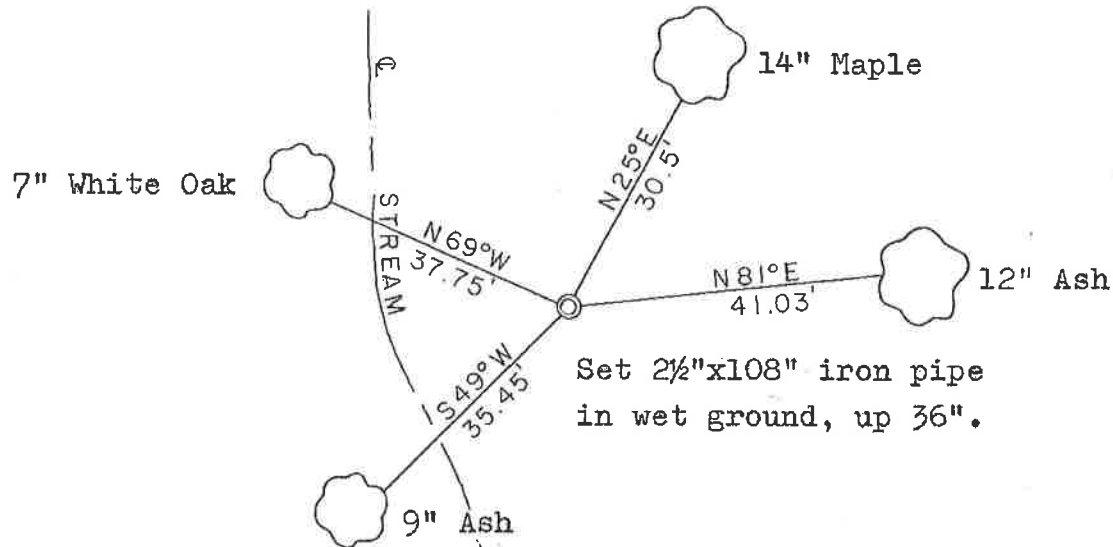
CERTIFIED LAND CORNER

History of corner establishment since Original Government Survey

U.V. Beebe was here in December of 1873.

Description of corner evidence found:

Set corner on line and equidistant between the Northeast and Southeast corners of Section 25.

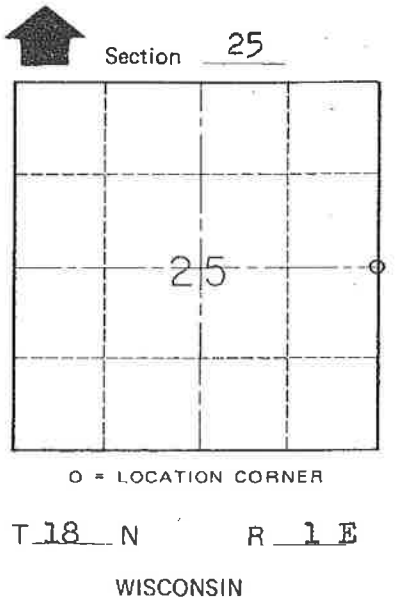
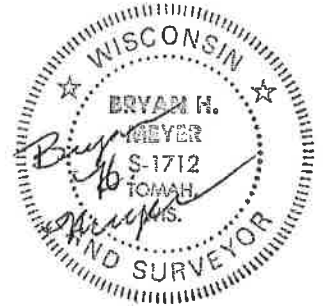


NOTE: All trees shown are double blazed with blazes facing the corner. They are also hacked in the side with a nail set in the hack. Distances are to the nails.

WISCONSIN COORDINATE SYSTEM

No. 100

41801252000



~~City, Village or~~ Town of Byron

County of Monroe