

CERTIFICATE

CERTIFIED LAND CORNER

21901172000

No. 56

PAGE 2

I, Harley A. Sime, do hereby certify that on the _____ day of October 1975, I found (evidence) (~~no evidence~~) of the West 1/4 corner of Section 16, T19 N, R1 W, Fourth Principal Meridian, and I re-established said corner according to the Wisconsin Statutes as shown and described hereon.

Dated this 2nd day of March 1976.

County Surveyor _____

History of original corner establishment:

Description of corner evidence found:

Duane Marten found a 1" iron pipe at this corner on December 24, 1971, removed the pipe, and replaced it with a Harrison marker. Sime and Malliet found the Harrison in October of 1975.

UPDATE: This corner was obliterated during the course of new construction. The corner was re-established based on previous survey data. All the ties of record were destroyed. A new monument was set and ties established as illustrated below.

Douglas J. Malliet, R.L.S.1266
8 September 1997

ALL TIES AND CORNER FOUND IN PLACE - AUGUST 12, 2020.
Mary Z. Dechant S-1744

Description of corner and witness monuments, references and accessories used to perpetuate the original or re-established location of this corner:

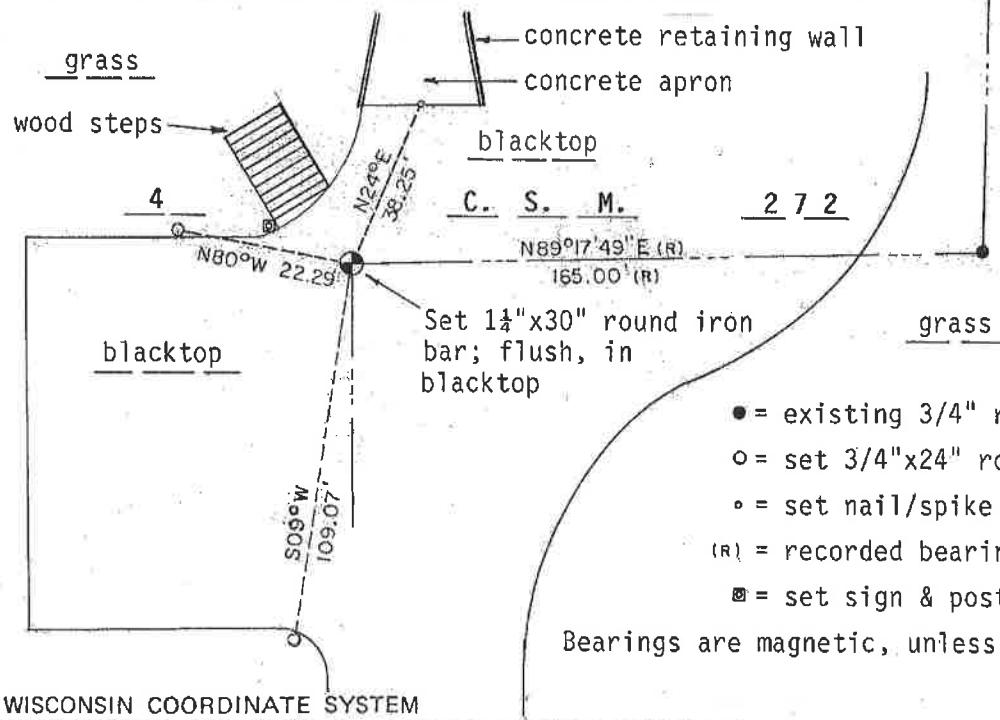
Found a Harrison, down 2 to 3 inches.

Witnesses to corner location:

G. Sime-Crew Chief

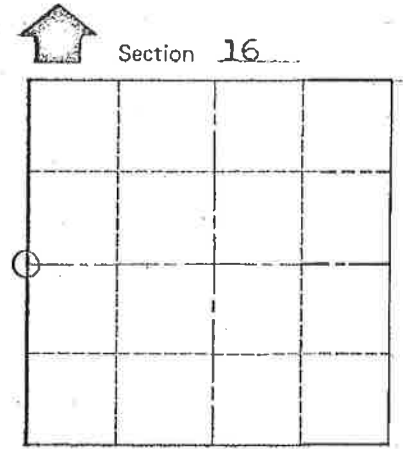
D. Malliet

CREW: Douglas J. Malliet, R.L.S.
Bryan H. Meyer, R.L.S.
8 September 1997

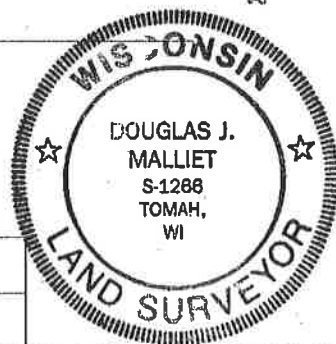


- = existing 3/4" round iron bar
- = set 3/4"x24" round iron bar
- = set nail/spike
- (R) = recorded bearing/distance
- ⊠ = set sign & post

Bearings are magnetic, unless noted otherwise.



Section 16
T 19 N R 1 W
WISCONSIN



COUNTY SURVEYOR FORM NO. 1

SURVEY CONTROL ORDER

| Horizontal | | | | | |
|-------------------|----------|-----------|---------------|------|--|
| Vertical | | | | | |
| Corner | East (X) | North (Y) | Elevation (Z) | Zone | |
| Control Sta. Name | | | | | |

City, Village or Town Lincoln
County of Monroe

2938

I, Harley A. Sime, do hereby certify that on the _____ day of October 1975, I found (evidence) (~~no evidence~~) of the West 1/4 corner of Section 16, T 19 N, R 1 W, Fourth Principal Meridian, and I re-established said corner according to the Wisconsin Statutes as shown and described hereon.

History of original corner establishment:

Description of corner evidence found:

Dated this 2nd day of March 1976.

Duane Marten found a 1" iron pipe at this corner on December 24, 1971, removed the pipe, and replaced it with a Harrison marker. Sime and Malliet found the Harrison in October of 1975.

~~County Surveyor~~ **Approved: HARLEY A. SIME**
MONROE CO. SURVEYOR

Description of corner and witness monuments, references and accessories used to perpetuate the original or re-established location of this corner:

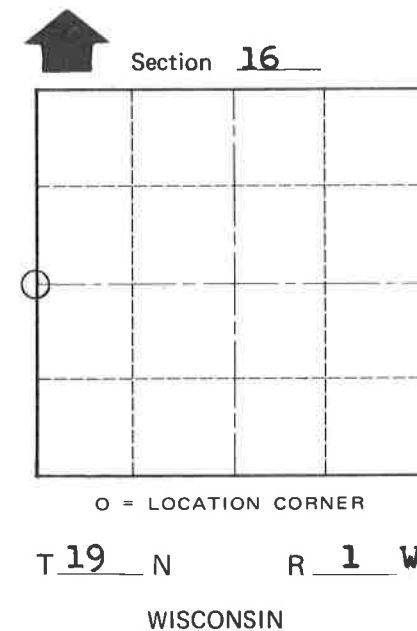
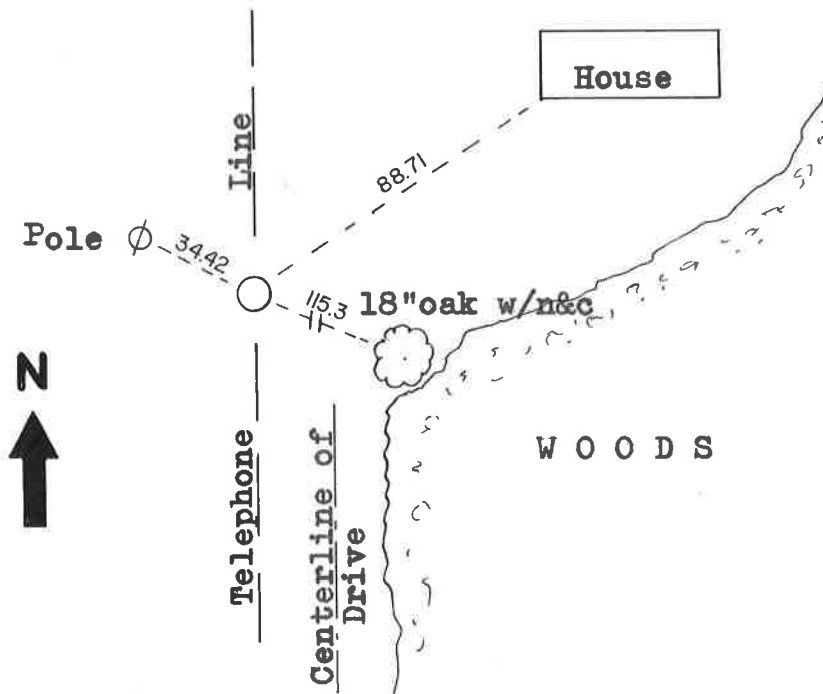
Found a Harrison, down 2 to 3 inches.

Witnesses to corner location:

G. Sime-Crew Chief

D. Malliet

COUNTY SURVEYOR FORM NO. 1



SURVEY CONTROL ORDER

| | |
|------------|-------|
| Horizontal | _____ |
| Vertical | _____ |

WISCONSIN COORDINATE SYSTEM

| Corner | East (X) | North (Y) | Elevation (Z) | Zone |
|-------------------|----------|-----------|---------------|------|
| Control Sta. Name | | | | |

City, Village or Town Lincoln

County of Monroe