

21902322000

I, Gary L. Dechant, do hereby certify that on the 21st day of November 1985, I found (evidence) of the W 1/4 corner of Section 33, T 19 N, R 2 W Fourth Principal Meridian, and I re-established said corner according to the Wisconsin Statutes as shown and described hereon.

Dated this 25th day of Nov. 1985.

Gary L. Dechant Registered Land Surveyor-1744 Title

History of corner establishment since Original Government Survey

Fred Holden set an iron pipe at the corner from the original bearing trees.

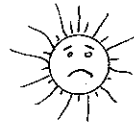
Description of corner evidence found:

Found a 3/4"x34" iron bar inside of Holden's iron pipe. Holden's iron pipe and the upper 2/3 of the iron bar were bent over and lying flat. Replaced with a Harrison Monument.

Gary L. Dechant WISCONSIN LAND SURVEYOR Nov. 25, 1985

Description of corner and witness monuments, references and accessories used to perpetuate the original or re-established location of this corner:

Slight snow cover 2:45 P.M. 15°

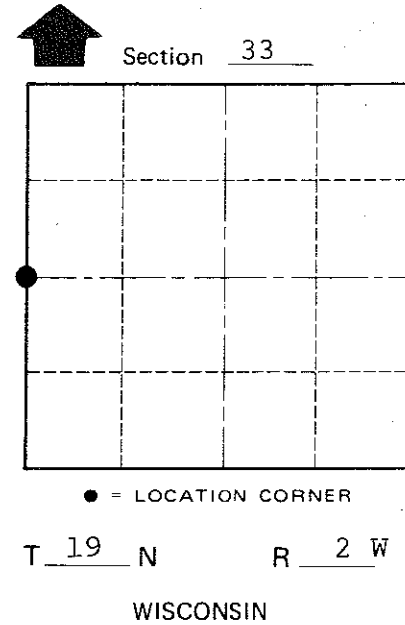
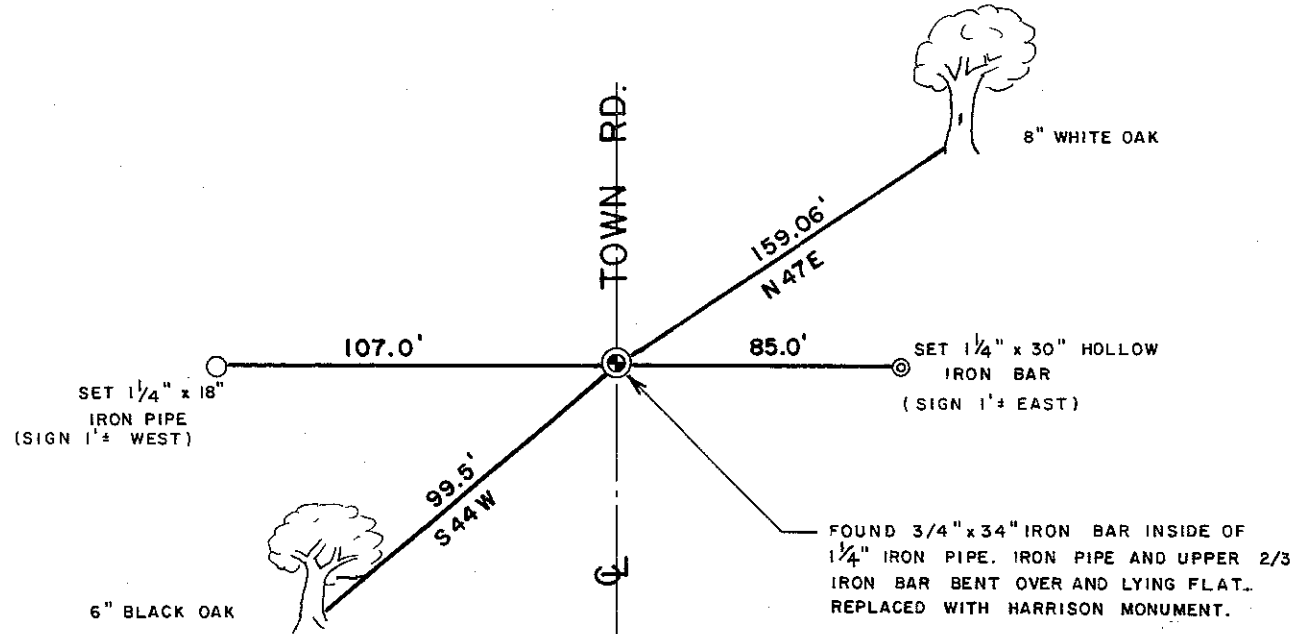


Witnesses to corner location:

Lawrence A. Feddersen S-1226

Gary L. Dechant

COUNTY SURVEYOR FORM NO. 1



(Trees double blazed, scribed, P.K. nails set)

SURVEY CONTROL ORDER

Table with 2 rows: Horizontal, Vertical

WISCONSIN COORDINATE SYSTEM

Table with 5 columns: Corner, East (X), North (Y), Elevation (Z), Zone

City, Village or Town Grant County of Monroe