

21503112000

I, Bryan H. Meyer, do hereby certify that on the 7th day of April 1989, I found (evidence) ~~(no evidence)~~ of the East 1/4 corner of Section 11, T15 N, R3 W Fourth Principal Meridian, and I re-established said corner according to the Wisconsin Statutes as shown and described hereon.

Dated this 6th day of July 1989.

Bryan H. Meyer

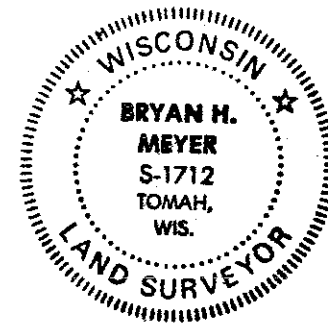
Registered Land Surveyor
Title

History of corner establishment since Original Government Survey

Webster Kenyon was here in November of 1891. Fred Holden was here sometime in 1908.

Description of corner evidence found:

I re-established this corner equidistant between the Northeast and Southeast corners of Section 11 and in the remnants of an old down North-South fence.



COUNTY SURVEYOR FORM NO. 1

Description of corner and witness monuments, references and accessories used to perpetuate the original or re-established location of this corner:

Crew: Meyer, Forsythe
Date: April 7, 1989 - 4:00 P. M.
Weather: P. Cloudy, 50°±
Witnesses to corner location:

Bryan H. Meyer

Brian Forsythe

H. A. SIME & ASSOC.

Surveying & Land Planning

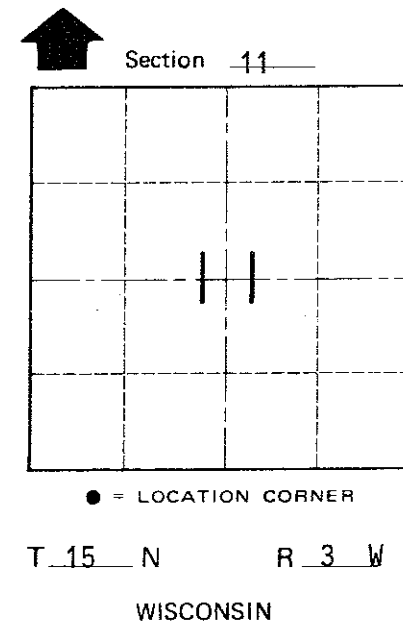
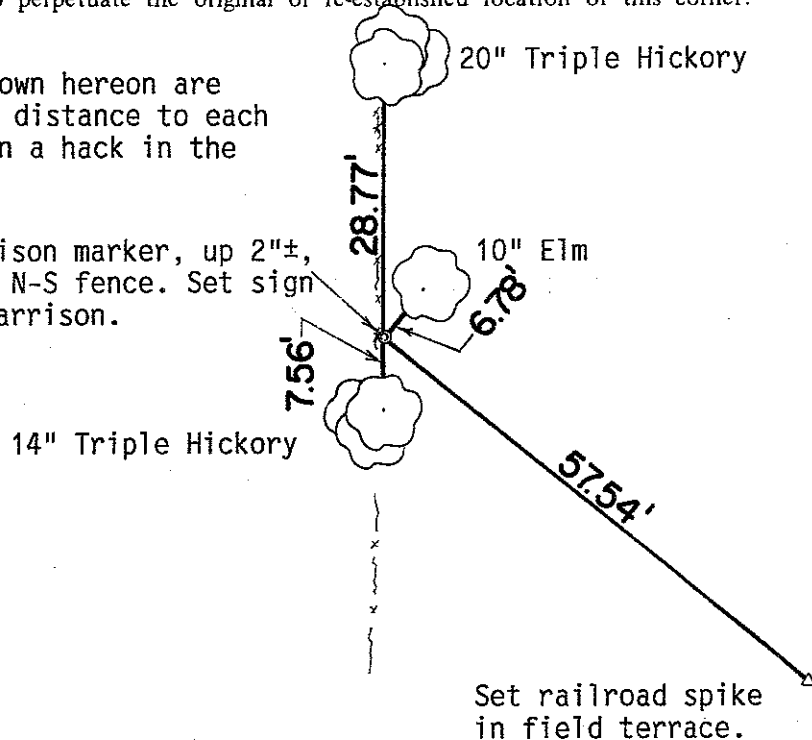
1819 Stoughton Ave. - P.O. Box 703

TOMAH, WI 54660

608-372-5392

The three trees shown hereon are double blazed; the distance to each is to a nail set in a hack in the side of each tree.

Set cast iron Harrison marker, up 2"±, in remnants of old N-S fence. Set sign on South side of Harrison.



SURVEY CONTROL ORDER

Horizontal	_____
Vertical	_____

WISCONSIN COORDINATE SYSTEM

Corner	East (X)	North (Y)	Elevation (Z)	Zone
Control Sta. Name				

~~City, Village or Town~~ of Jefferson
County of Monroe