

COPY
ORIG w/
Maps of
SURVEYS

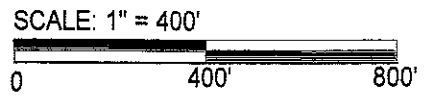
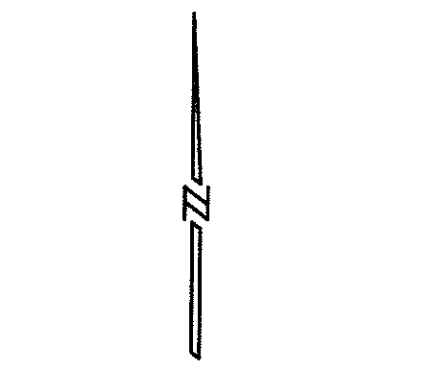
Ties for S 1/4 Corner Section 16, T19N, R1W

Sheet 2 of 2

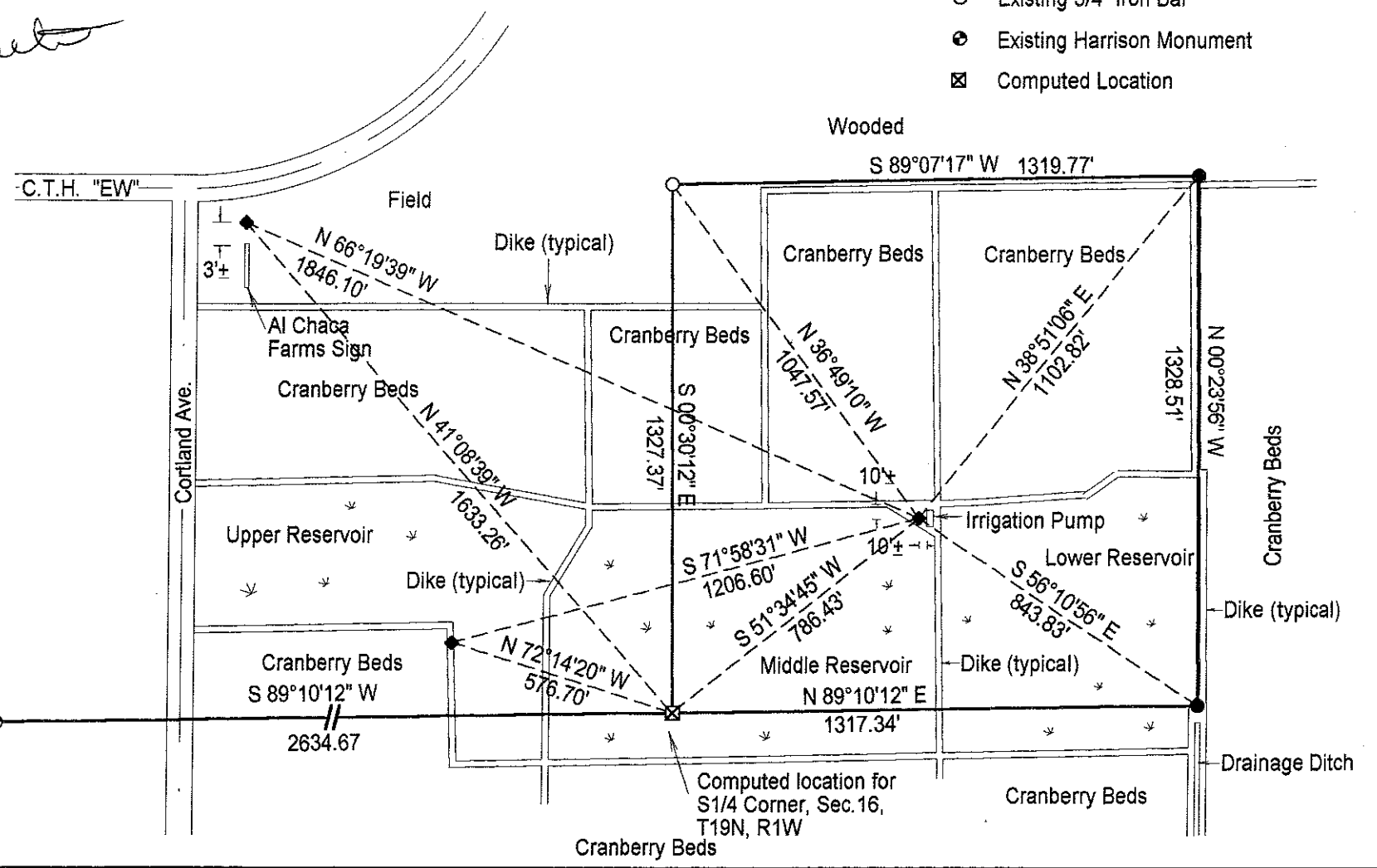


LEGEND

- ◆ Set 1/2" x 24" Iron Bar, min. wt. 1.13#/ft.
- Set 1 1/2" x 24" Iron Pipe, min. wt. 4.0#/ft.
- Existing 3/4" Iron Bar
- ⊙ Existing Harrison Monument
- ⊠ Computed Location



Bearings are referenced to the South line SW1/4-SE1/4, Section 16, T19N, R1W, recorded to bear N 89° 10' 12" E, per Sheet 1 of this map.



I, Bryan H. Meyer, do hereby certify that on the ninth day of August 19 89, I found ~~(no evidence)~~ (no evidence) of the North 1/4 corner of Section 21, T 19 N, R 1 W Fourth Principal Meridian, and I re-established said corner according to the Wisconsin Statutes as shown and described hereon.

Dated this 8th day of Sept. 19 89.

Bryan H. Meyer

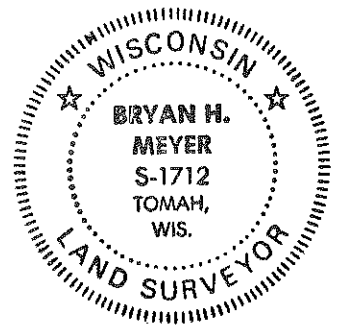
Deputy County Surveyor
Title

History of corner establishment since Original Government Survey

No recorded history.

Description of corner evidence found:

I set this corner on line and equi-distant between the Northwest and Northeast corners of Section 21.



H. A. Sime and Assoc.
P. O. Box 705
Tomah, Wisconsin 54660
Phone: (608)-372-5392

COUNTY SURVEYOR FORM NO. 1

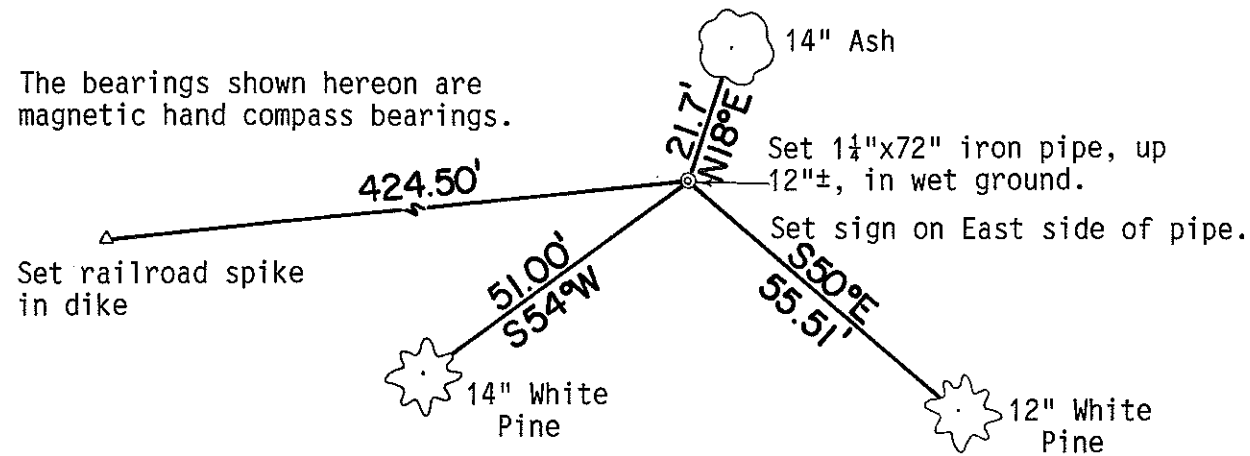
Description of corner and witness monuments, references and accessories used to perpetuate the original or re-established location of this corner:

Crew: Meyer, Kenworthy
Date: August 9, 1989
Weather: Clear, 65°±.
Witnesses to corner location:

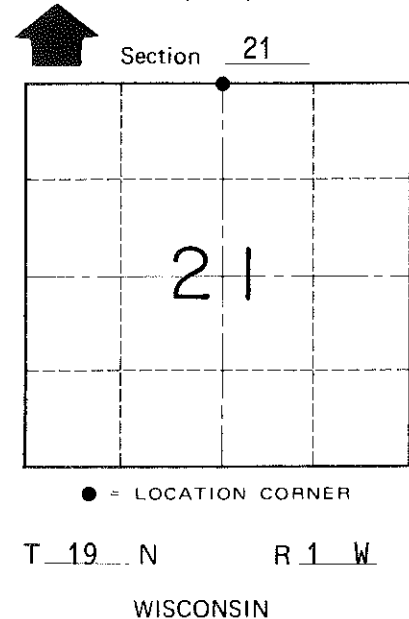
Bryan H. Meyer

John Kenworthy

The bearings shown hereon are magnetic hand compass bearings.



The three trees shown on this map are double blazed; the distance shown to each is to a nail set in a hack in the side of each tree.



SURVEY CONTROL ORDER

Horizontal	_____
Vertical	_____

WISCONSIN COORDINATE SYSTEM

Corner	East (X)	North (Y)	Elevation (Z)	Zone
Control Sta. Name				

~~City/Village~~ Town of Lincoln

County of Monroe