

67

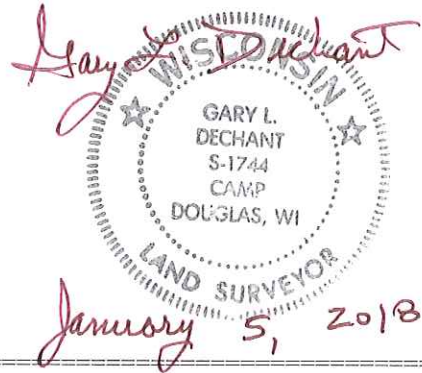
**U.S. PUBLIC LAND CORNER
MAINTENANCE**

**Corner ID : SE Sec. 16, T19N-R1W
21901160000**

<u>DATE</u>	<u>CREW</u>	<u>MONUMENT TYPE</u> -----
November 29, 2017	Zachariah P. Dechant Gary L. Dechant	Existing Harrison intact, down 14" Set new sign 1/2' west.

References:

	<u>Bearing</u>	<u>Distance</u>
1) Set 3/4"x24" round iron bar, down 4", west end of loading dock/scale	N82E	48.24'
2) Set 3/4"x24" round iron bar, down 4", 3' north of 10" White Oak	S74E	79.51'
3) Set 3/4"x24" round iron bar, down 4", 4' NW of 12" White Pine	S26E	50.47'
4) Set 3/4"x24" round iron bar, down 4"	S32W	47.07'
5) Existing 3/4" round iron bar, down 12" in dike road	N43W	19.08'



I, Harley A. Sime, do hereby certify that on the _____ day of October 19 75, I found (evidence) ~~(no evidence)~~ of the Southeast corner of Section 16, T 19 N, R 1 W Fourth Principal Meridian, and I re-established said corner according to the Wisconsin Statutes as shown and described hereon.

Dated this 2nd day of March 19 76.

County Surveyor _____

Title

Approved: **HARLEY A. SIME**
MONROE CO. SURVEYOR

Description of corner and witness monuments, references and accessories used to perpetuate the original or re-established location of this corner:

Set a Harrison marker.

Witnesses to corner location:

G. Sime-Crew Chief

L. Lueck

D. Malliet-Witness

History of original corner establishment:

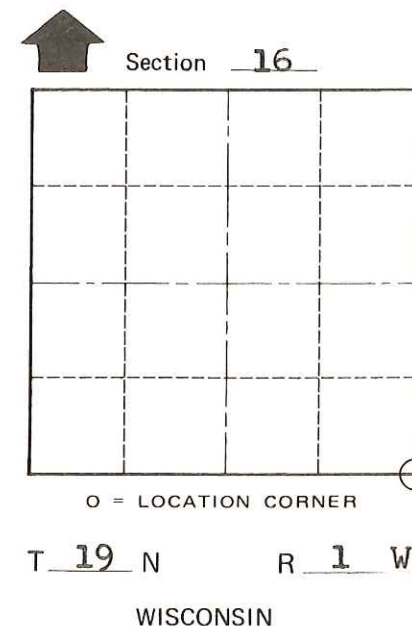
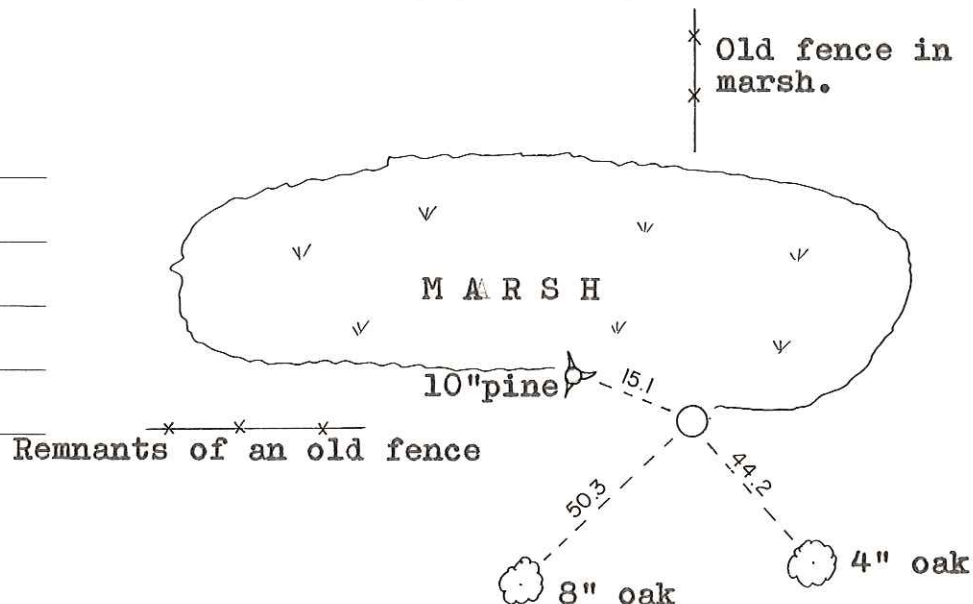
Henry Schroeder was at this corner in June of 1893.

Description of corner evidence found:

Harry Porter, a very elderly local resident, testified that many years ago a surveyor placed a post at this corner. He said that as years passed and the post rotted away, he placed a pipe at the post position.

G. Sime and D. Malliet found this pipe. While digging, remnants of a old post were found by the pipe position. This position also fit the East line of the section. Accepted the pipe as found and replaced it with a Harrison marker.

**See Reverse Side
For Maintenance**



SURVEY CONTROL ORDER

Horizontal	_____
Vertical	_____

WISCONSIN COORDINATE SYSTEM

Corner	East (X)	North (Y)	Elevation (Z)	Zone
Control Sta. Name				

City, Village or Town Lincoln

County of Monroe

COUNTY SURVEYOR FORM NO. 1

I, Harley A. Sime, do hereby certify that on the _____ day of October 1975, I found (evidence) _____ of the Southeast corner of Section 16, T19 N, R1 W Fourth Principal Meridian, and I re-established said corner according to the Wisconsin Statutes as shown and described hereon.

Dated this 2nd day of March 1976.

County Surveyor
Title

History of original corner establishment:

Henry Schroeder was at this corner in June of 1893.

Update: Joseph Glodowski was here in July of 1984. Gary Dechant was probably here in July of 1984.
Description of corner evidence found:

Harry Porter, a very elderly local resident, testified that many years ago a surveyor placed a post at this corner. He said that as years passed and the post rotted away, he placed a pipe at the post position.

G. Sime and D. Malliet found this pipe. While digging, remnants of a old post were found by the pipe position. This position also fit the East line of the section. Accepted the pipe as found and replaced it with a Harrison marker.

Update: Found Harrison marker up 12"± on South side of dike; Sime's Pine tree was also gone. Mounded dirt around Harrison and got additional ties as shown below.

**See Reverse Side
For Maintenance**

Description of corner and witness monuments, references and accessories used to perpetuate the original or re-established location of this corner:

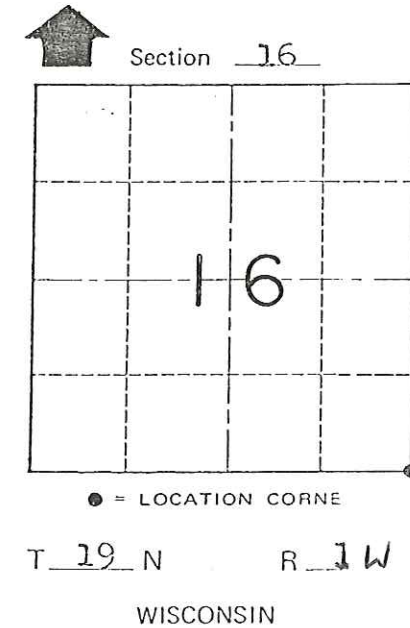
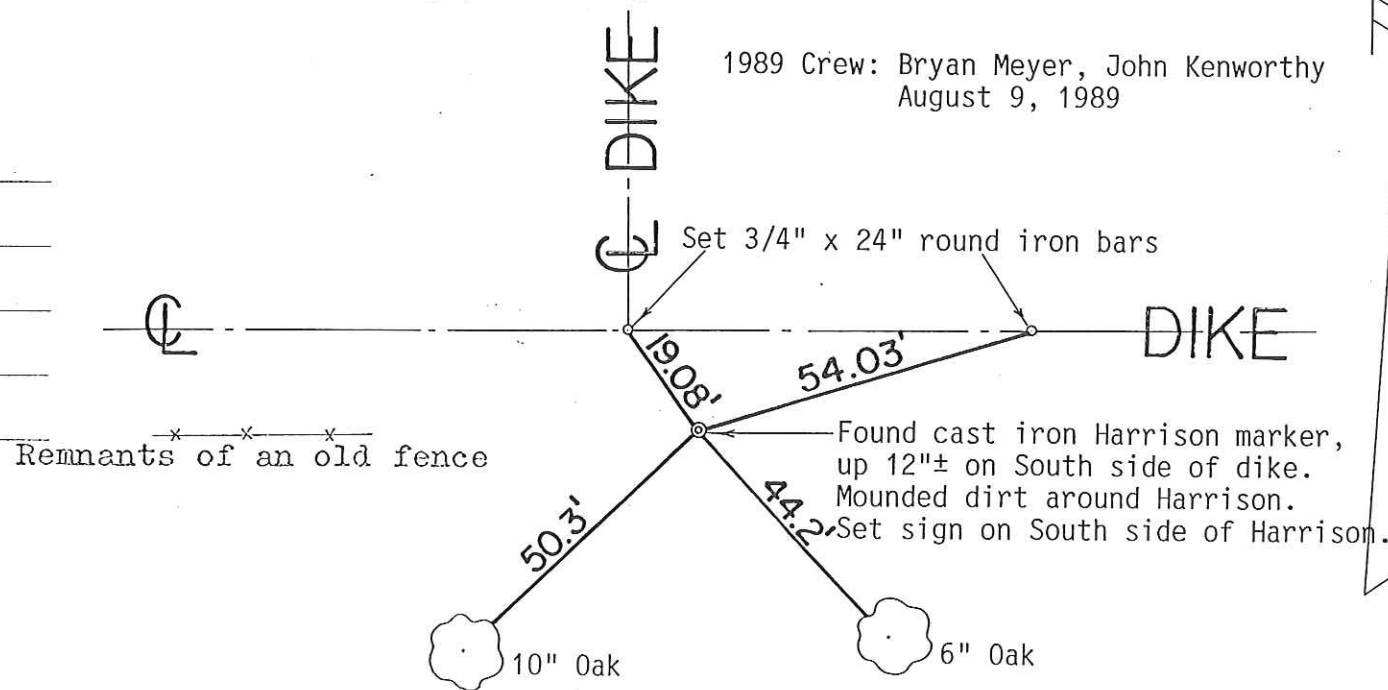
Set a Harrison marker.

Witnesses to corner location:

G. Sime--Crew Chief

L. Lueck

D. Malliet--Witness



COUNTY SURVEYOR FORM NO. 1

SURVEY CONTROL ORDER

Horizontal	_____
Vertical	_____

WISCONSIN COORDINATE SYSTEM

Corner	East (X)	North (Y)	Elevation (Z)	Zone
Control Sta. Name				

City, Village or Town Lincoln
County of Monroe

Stock No. 26273

U. S. PUBLIC LAND SURVEY MONUMENT RECORD

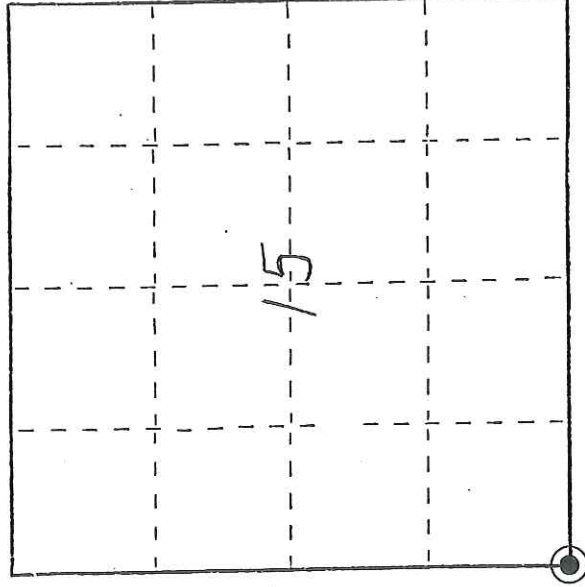
I N S T R U C T I O N S : This record shall show the location of the corner and shall include all of the following nine elements (a through i).

- (a) Identify the corner by reference to the U.S. public land survey system.

● = Corner monument restored.

Southwest corner of Section 15, T19N, R1W,
Fourth Principal Meridian, Town of Lincoln,
Monroe County, Wisconsin.

**See Reverse Side
For Maintenance**

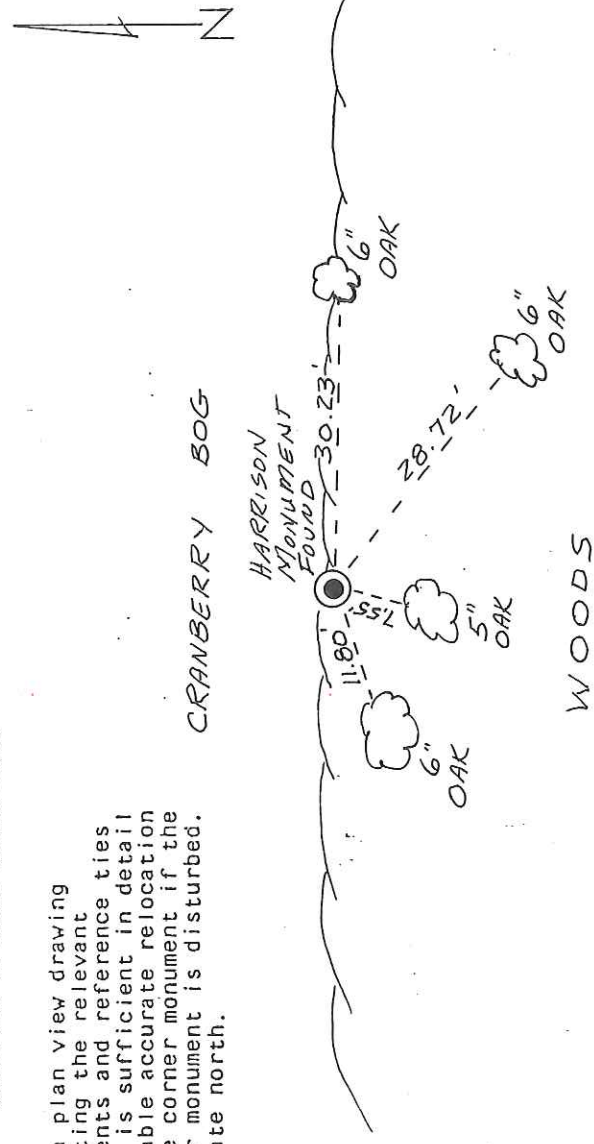


- (b) Describe any record evidence, monument evidence, occupational evidence, testimonial evidence or any other material evidence you considered, and whether the monument was found or placed.

The Harrison monument at this corner was found on March 30, 1993 by Michael L. Deems. (See previous Certified Land Corner record by Harley A. Sime dated March 2, 1976). None of the ties set by Mr. Sime were found. Four additional ties were set as shown below.

- (c) In the plan view drawing below, provide reference ties to at least 4 witness monuments, or, if the location is within a municipality, to at least 2 witness monuments. (Witness monuments shall be made of concrete, natural stone, iron or other equally durable material.) Describe witness monuments.

- (d) Show a plan view drawing depicting the relevant monuments and reference ties which is sufficient in detail to enable accurate relocation of the corner monument if the corner monument is disturbed. Indicate north.



21901160000

ALL TIES ARE NAILS WITH CAPS IN TREES SHOWN.

(e) Describe any material discrepancy between the location of the corner as restored or reestablished and the location of that corner as previously restored or reestablished by distance and direction. Show the discrepancy on the plan view drawing under (d), above. Show the distances between the corner as previously restored or reestablished and (1) the corner as restored or reestablished, and (2) to at least 2 of the witness monuments shown on the drawing in (d), above.

No known discrepancies.

(f) Was the corner restored through acceptance of (1) an obliterated evidence location, or, (2) a found, perpetuated location?

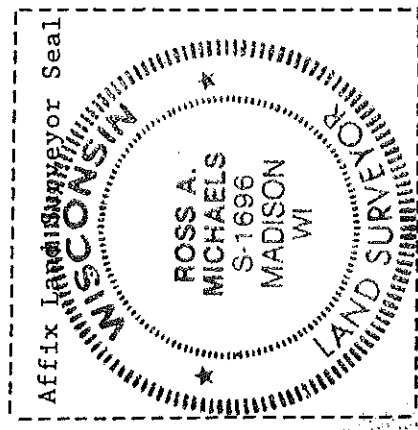
A found perpetuated location.

(g&h) Was the corner reestablished through lost corner proportionate methods? If so, show the method, including the directions and distances to other public land survey corners used as evidence or used for proportioning in determining the corner location?

Not a lost corner.

(1) Ross A. Michaels (type or print name) certify that the corner location shown on this record was determined by me or under my direction and control and that this U.S. Public Land Survey Monument Record is correct and complete to the best of my knowledge and belief.

Ross A. Michaels Oct 22, 1993



I, Timothy J. Jeatran, do hereby certify that on the 11th day of June 2003 ~~19XX~~, I found (evidence) (~~no~~evidence) of the Southeast corner of Section 16, T19 N, R 1W Fourth Principal Meridian, and I re-established said corner according to the Wisconsin Statutes as shown and described hereon.

Dated this 12th day of June 2003 ~~19XX~~.

Timothy J. Jeatran

Registered Land Surveyor
Title

History of corner establishment since Original Government Survey

In Oct. 1975, G. Sime and D. Malliet found a pipe and remnants of a old post and replaced the pipe with a Harrison marker. On Aug. 9, 1989, Bryan Meyer and John Kenworthy found Harrison marker up 12" on South side of dike. They mounded dirt around Harrison and did additional ties.

Description of corner evidence found:

Dallas Wilhite was at this corner in July 2000, in Vol. 13 C.S.M., page 133. He found corner disturbed and set a 3/4" iron bar at record tie distances. We dug down 2 1/2 feet and found Harrison marker tipped over to the South. We reset the Harrison using the 3/4" iron bar ties and 6" Oak tie set by Bryan Meyer. The Harrison was set down 4" with a witness sign on the North side.

Note: Joseph Glodowski was at this corner in July 1984 & June 1994.
Gary Dechant was at this corner in Oct. 1991, April 1997 & Aug. 1997.

Description of corner and witness monuments, references and accessories used to perpetuate the original or re-established location of this corner:

Reset Existing Harrison marker using existing ties.

Witnesses to corner location:

Tim Jeatran

Jerry Church



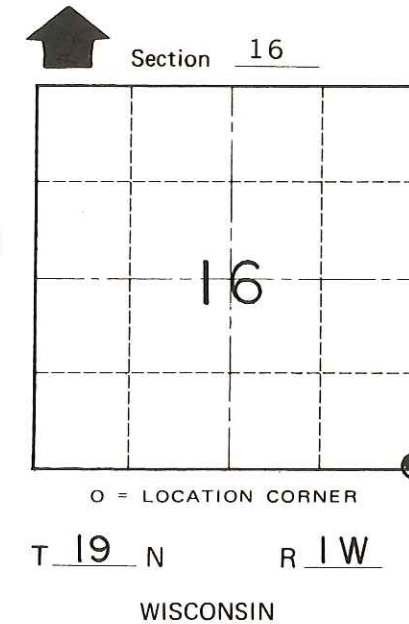
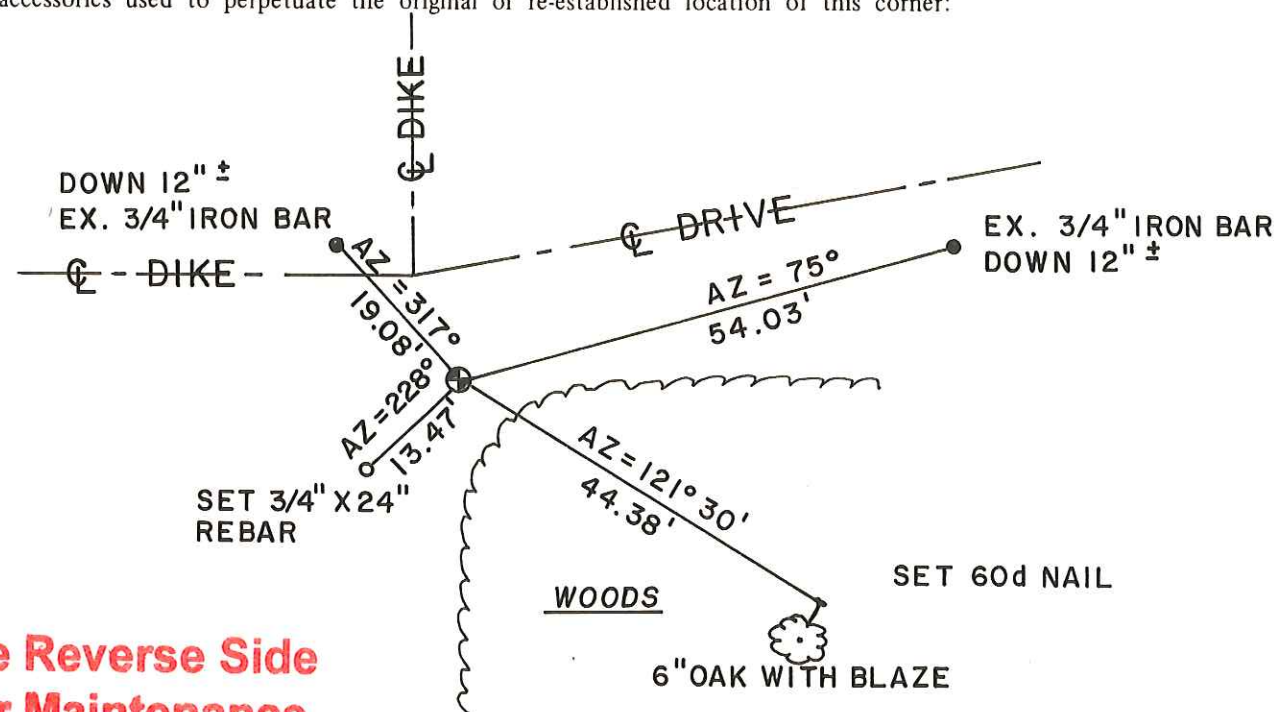
SURVEY CONTROL ORDER

Horizontal	_____
Vertical	_____

See Reverse Side For Maintenance

WISCONSIN COORDINATE SYSTEM

Corner	East (X)	North (Y)	Elevation (Z)	Zone
Control Sta. Name				



COUNTY SURVEYOR FORM NO. 1

City, Village or Town Lincoln

County of Monroe