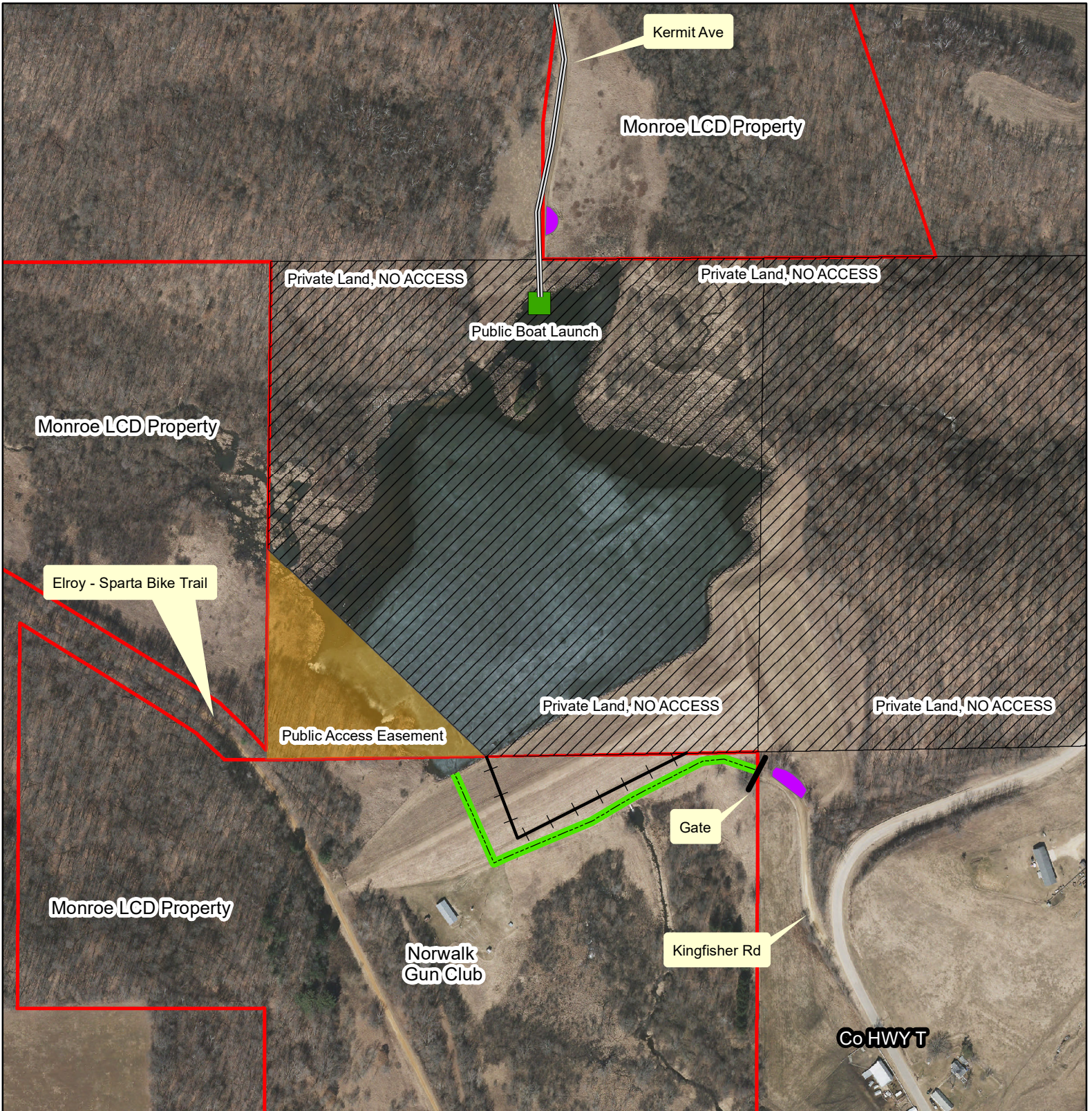


# Tri-Creek Pond Access

Customer(s): MONROE COUNTY LCD  
 Legal Description: T16N, R2W, SEC 16,17,20,21  
 Township: RIDGEVILLE

Field Office: SPARTA SERVICE CENTER  
 Agency: MONROE COUNTY LCD



Date: 10/28/20

## Legend

- Public Access
- Public\_Boat\_Launch
- Foot Access Path
- Parking Area Along Road
- Fence
- Private Land
- Monroe Co. Land Conservation Dept

1 inch = 350 feet

