

41801362000

I, Lawrence A. Feddersen, do hereby certify that on the 1st and 7th day of February 1979, I found (no evidence) of the East Quarter corner of Section 36, T 18 N, R 1 E, Fourth Principal Meridian, and I re-established said corner according to the Wisconsin Statutes as shown and described hereon.

Dated this 22 day of May 1979.

Lawrence A. Feddersen

Registered Land Surveyor



History of original corner establishment:

No subsequent history of monument perpetuation since the original U.S. Government Survey in Monroe County.

Description of corner evidence found:

Set Harrison on line, half way between the Northeast corner and the Southeast corner.

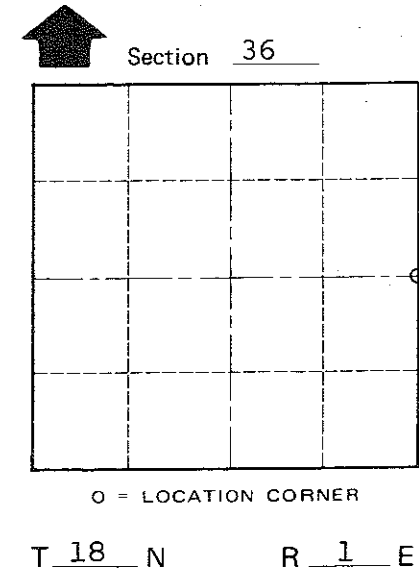
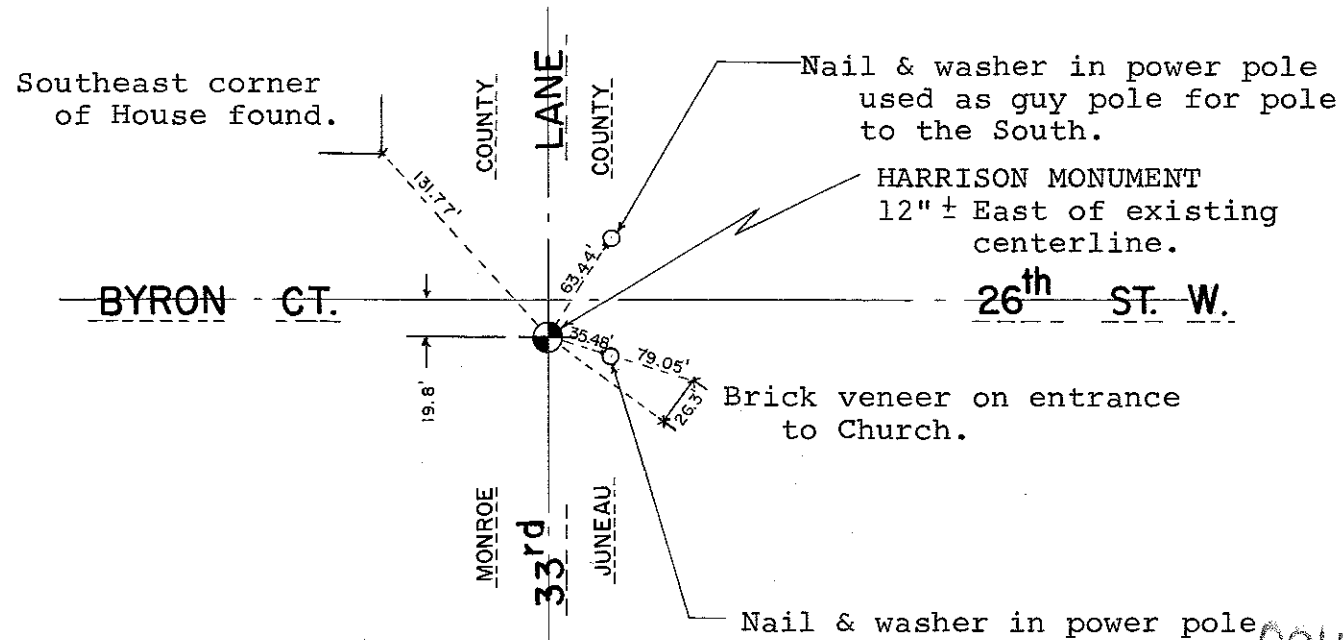
Agrees with East-West Quarter line fence in Section 36.

Description of corner and witness monuments, references and accessories used to perpetuate the original or re-established location of this corner:

Witnesses to corner location:

Lawrence A. Feddersen

Mark R. Heidecke



O = LOCATION CORNER

T 18 N R 1 E WISCONSIN

PLACED COUNTY SURVEYOR'S SIGN 6-18-87

COUNTY SURVEYOR FORM NO. 1

SURVEY CONTROL ORDER

Table with 2 rows: Horizontal, Vertical

WISCONSIN COORDINATE SYSTEM

Table with 5 columns: Corner, East (X), North (Y), Elevation (Z), Zone

Byron Town, Monroe County, Wisconsin