

4

U.S. PUBLIC LAND CORNER MAINTENANCE

Corner ID : N1/4 Sec.2, T17N-R1E

41801350020

DATE	CREW	MONUMENT TYPE
May 1, 2014	Zachariah P.Dechant Gary L. Dechant	Existing Harrison 13' south centerline Grosbeak Ave & 7' West centerline Grover Road, down 2"

References:

	<u>Bearing</u>	<u>Distance</u>
1) Set 3/4"x24" hex iron bar , down 8"	N57E	78.13'
2) Set 3/4"x24' hex iron bar, down 8"	S48E	58.32'
3) Set 3/4"x24" hex iron bar 8' west power pole, down 8"	S57W	49.38
4) Set 3/4"x24" hex iron bar , down 6"	N48W	84.57'

COORDINATES:

NOTE: Reference markers and Harrison set on straight lines

Gary L Dechant
WISCONSIN
GARY L
DECHANT
S-1744
CAMP
DOUGLAS, WI
LAND SURVEYOR
May 1, 2014

41801350020

I, William C. Jung, do hereby certify that on the 21st day of May 1980, I found ~~(evidence)~~ (no evidence) of the North 1/4 corner of Section 2, T 17 N, R 1 E Fourth Principal Meridian, and I re-established said corner according to the Wisconsin Statutes as shown and described hereon.

History of corner establishment since Original Government Survey
Fred Holden set a reference stone at this corner in February of 1901.

Dated this 5th day of Jan. 1981.

William C. Jung

William C. Jung - R.L.S. 1323
Title

Description of corner evidence found:

Set the corner on line and equidistant between the N.W. and N.E. corners of Section 2. Could not find the reference stone. Set a Harrison marker. I had little luck in the section while searching for Holden's monuments and accessories.

COUNTY SURVEYOR FORM NO. 1

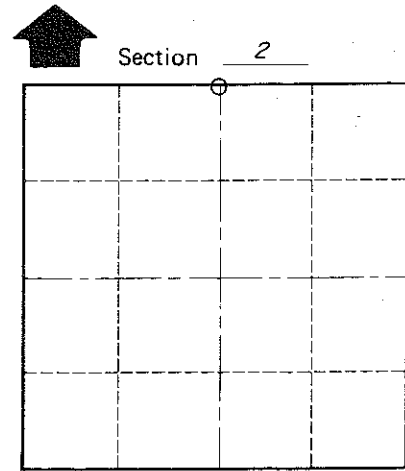
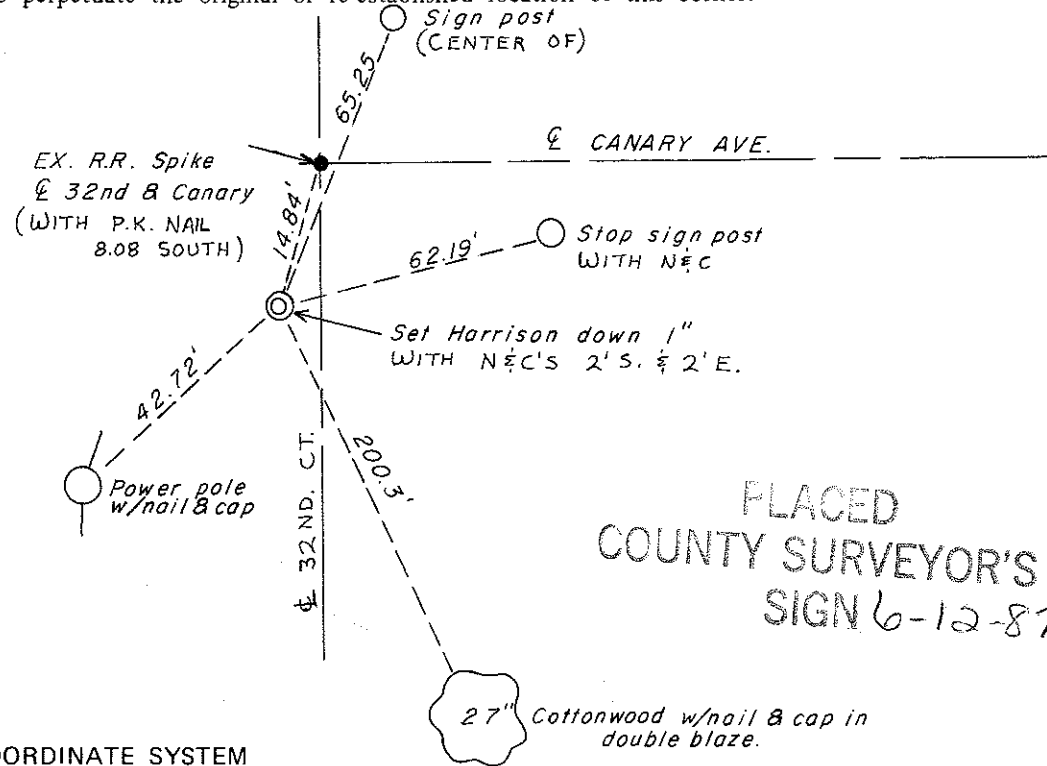
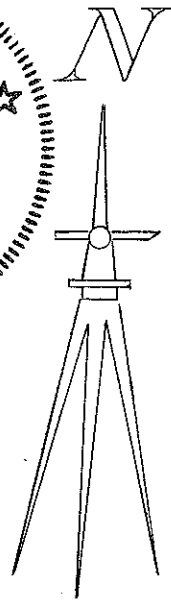
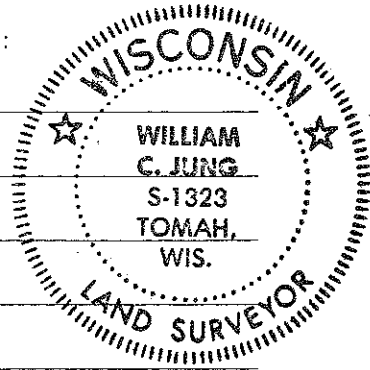
Description of corner and witness monuments, references and accessories used to perpetuate the original or re-established location of this corner:

Witnesses to corner location:

W. Jung

S. Sowers

C. Dade



T 17 N R 1 E
WISCONSIN

Approved: **HARLEY A. SIME**
MONROE CO. SURVEYOR

SURVEY CONTROL ORDER

Horizontal	_____
Vertical	_____

WISCONSIN COORDINATE SYSTEM

Corner	East (X)	North (Y)	Elevation (Z)	Zone
Control Sta. Name				

PLACED
COUNTY SURVEYOR'S
SIGN 6-12-87

City, Village or Town of Oakdale
County of Monroe
Wisconsin