

3

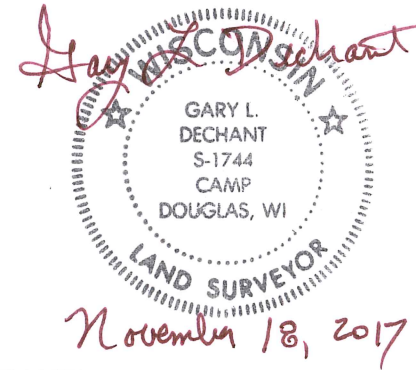
**U.S. PUBLIC LAND CORNER
MAINTENANCE**

**Corner ID : SE Sec. 35, T18N-R1E
41801350000**

<u>DATE</u>	<u>CREW</u>	<u>MONUMENT TYPE -----</u>
October 9, 2017	Zachariah P. Dechant Gary L. Dechant	Existing Harrison intact, down 10", mag nail 1' south and square headed nut on bolt 1' west, on north side of Grosbeak Ave.

<u>References:</u>	<u>Bearing</u>	<u>Distance</u>
1) Set 3/4"x24" round iron bar, down 6", 17' north of Grosbeak Ave	N50E	20.91'
2) Set 3/4"x24" round iron bar, down 6", 31' south of Grosbeak Ave & 42' NE of Railroad track, between two cut off telegraph poles	S50W	112.51'
3) Existing SE corner of top plate of Railroad bridge	S84W	166.17' (166.09')
4) Existing NE corner of top plate of Railroad bridge	West	188.11' (188.01')

Harrison and reference markers 1 & 2 set on straight lines.



I, Douglas J. Malliet, do hereby certify that on the 19th day of July 19 78, I found ~~evidence~~ (no evidence) of the Northwest corner of Section 1, T 17 N, R 1 E, Fourth Principal Meridian, and I re-established said corner according to the Wisconsin Statutes as shown and described hereon.

Dated this 1 day of Aug. 19 78.

Douglas J. Malliet

REGISTERED LAND SURVEYOR - S-1266
Title

History of original corner establishment:

Fred Holden visited this corner in February, 1901.

Description of corner evidence found:

No evidence of the corner was found. The corner was re-established on line and equidistant between an existing Harrison at the NW corner of Sec. 2, T17N-R1E, and an existing P-K nail, set by Owen Ayres & Asso. in 1977, at the NE corner of Sec. 1.

See Reverse Side For Maintenance

COUNTY SURVEYOR FORM NO. 1

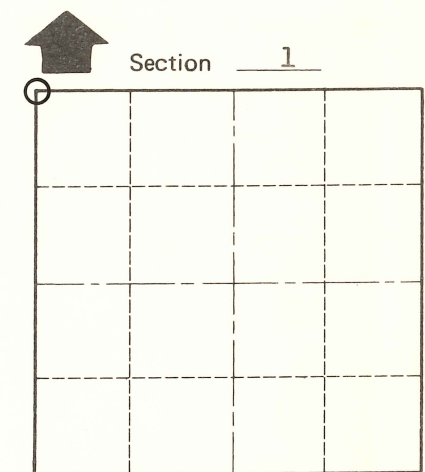
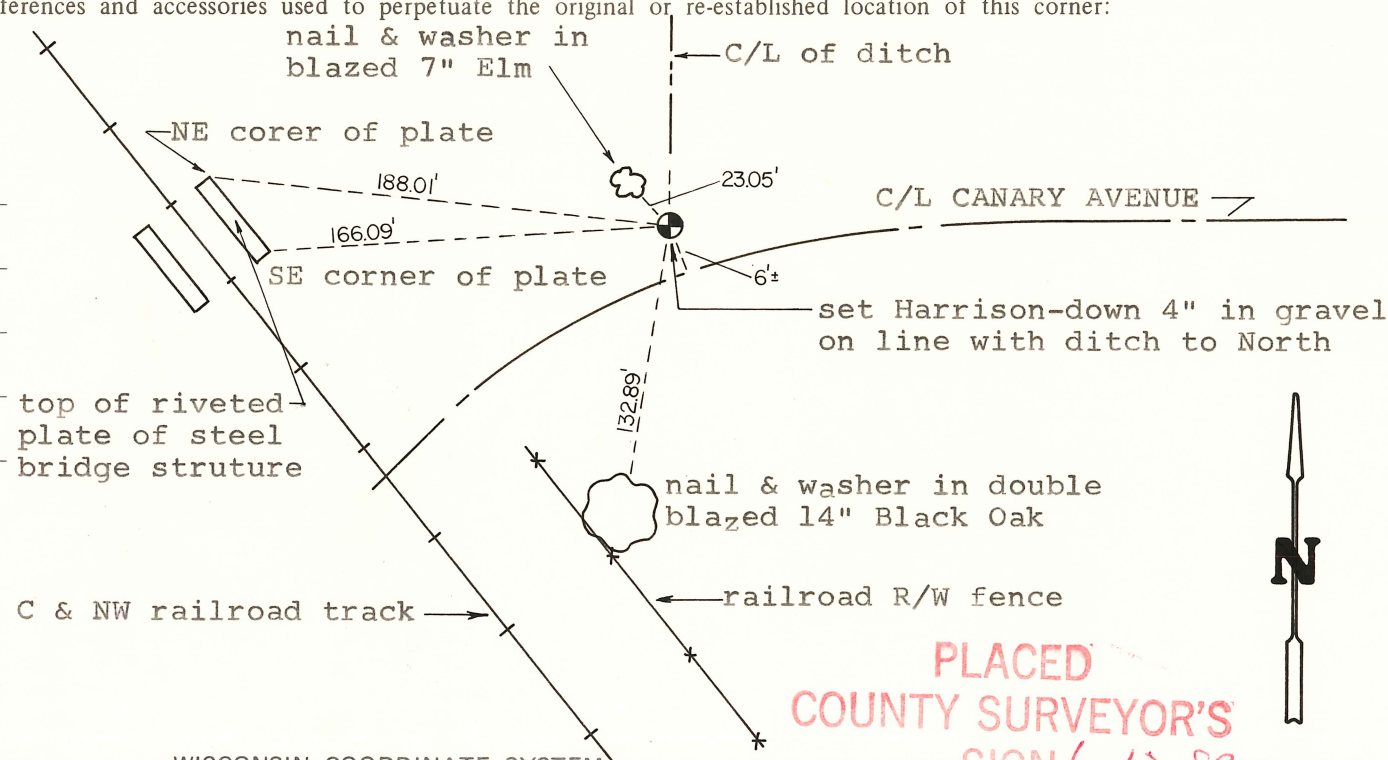
Description of corner and witness monuments, references and accessories used to perpetuate the original or re-established location of this corner:

Witnesses to corner location:

LAWRENCE A. FEDDERSEN

DOUGLAS J. MALLIET

DALE FEDDERSEN



O = LOCATION CORNER
T 17 N R 1 E
WISCONSIN

SURVEY CONTROL ORDER

Horizontal	_____
Vertical	_____

WISCONSIN COORDINATE SYSTEM

Corner	East (X)	North (Y)	Elevation (Z)	Zone
Control Sta. Name				

PLACED COUNTY SURVEYOR'S SIGN 6-12-87

City, Village or Town of OAKDALE

County of MONROE