

6

U.S. PUBLIC LAND CORNER MAINTENANCE

Corner ID : N1/4 Sec.3, T17N-R1E

41801340020

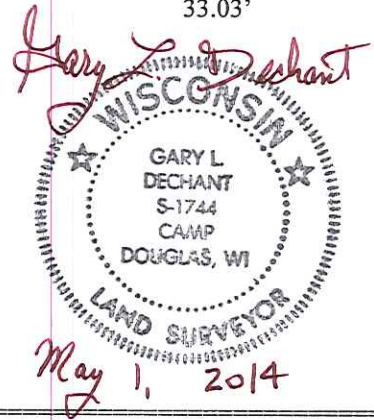
DATE	CREW	MONUMENT TYPE -----
May 1, 2014	Zachariah P.Dechant Gary L. Dechant	Existing Harrison Monument centerline Grosbeak Ave.

References:

	<u>Bearing</u>	<u>Distance</u>
1) Set 3/4"x24" hex iron bar 23' west of field entrance , down 8"	N27E	63.34'
2) Set 3/4"x24' hex iron bar, down 8"	S27E	37.99'
3) Set 3/4"x24" hex iron bar center of field entrance, down 8"	S27W	37.76'
4) Set 3/4"x24" hex iron bar middle of east-west power line, down 8"	N27W	59.82'
5) Existing 1" iron pipe	North	33.03'

COORDINATES:

NOTE: Reference markers and Harrison set on straight lines



CERTIFICATE

CERTIFIED LAND CORNER

No. 126

41801340020

I, Harley A. Sime, do hereby certify that on the 17th day of April 1974, I found (evidence) ~~(no evidence)~~ of the S 1/4 corner of Section 34, T 18 N, R 1 E, Fourth Principal Meridian, and I re-established said corner according to the Wisconsin Statutes as shown and described hereon.

History of original corner establishment:

Stone was set at this corner in Feb. of 1901 by Holden.

Description of corner evidence found:

Set Harrison Monument, down 5", in centerline of road and on line with N-S fence. Excavated for stone on April 17, 1974 but could not find it.

Dated this 9th day of Feb. 1978.

County Surveyor
Title

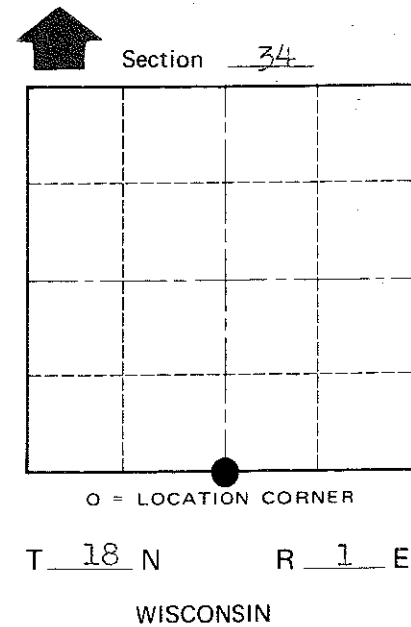
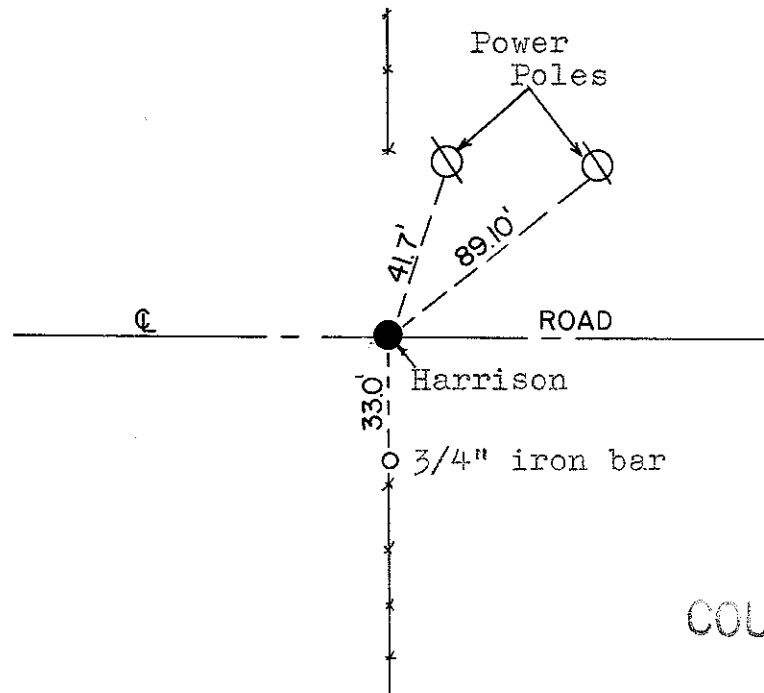
Approved: HARLEY A. SIME
MONROE CO. SURVEYOR

COUNTY SURVEYOR FORM NO. 1

Description of corner and witness monuments, references and accessories used to perpetuate the original or re-established location of this corner:

Witnesses to corner location:

D. Marten



PLACED
COUNTY SURVEYOR'S
SIGN 5-19-87

SURVEY CONTROL ORDER

Horizontal	_____
Vertical	_____

WISCONSIN COORDINATE SYSTEM

Corner	East (X)	North (Y)	Elevation (Z)	Zone
Control Sta. Name				

City, Village or Town Byron

County of Monroe