

5

U.S. PUBLIC LAND CORNER MAINTENANCE

Corner ID : NW Sec.2, T17N-R1E
41801340000

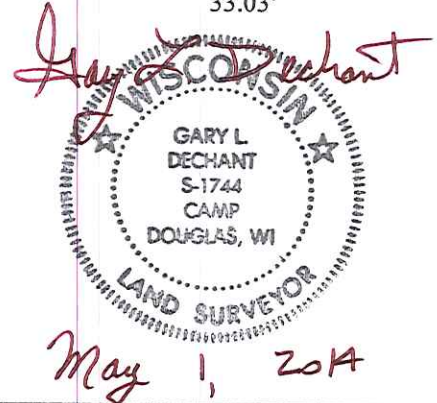
DATE	CREW	MONUMENT TYPE
May 1, 2014	Zachariah P. Dechant Gary L. Dechant	Existing Harrison Monument centerline Grosbeak Ave.

References:

	<u>Bearing</u>	<u>Distance</u>
1) Set 3/4"x24" hex iron bar 13' west of field entrance , down 8"	N36E	61.92'
2) Set 3/4"x24' hex iron bar, down 8"	S21E	49.90'
3) Set 3/4"x24" hex iron bar, 2" north of wood post, down 8"	S36W	53.67'
4) Set 3/4"x24" hex iron bar , down 8"	N21W	63.11'
5) Existing 1" pinched iron pipe	North	33.03'

COORDINATES:

NOTE: Reference markers and Harrison set on straight lines



CERTIFICATE

CERTIFIED LAND CORNER

No. 125

41801340000

I, Harley A. Sime, do hereby certify that on the 23rd day of April 1974, I found (evidence) ~~(no evidence)~~ of the SE corner of Section 34, T 18 N, R 1 E, Fourth Principal Meridian, and I re-established said corner according to the Wisconsin Statutes as shown and described hereon.

History of original corner establishment:

A reference stone was set 50 links South of corner in Feb. of 1901 by Holden.

Description of corner evidence found:

Set Harrison Monument, down 3", in centerline of road on line with N-S fence.

Dated this 9th day of Feb. 1978.

Update: May 21, 1980

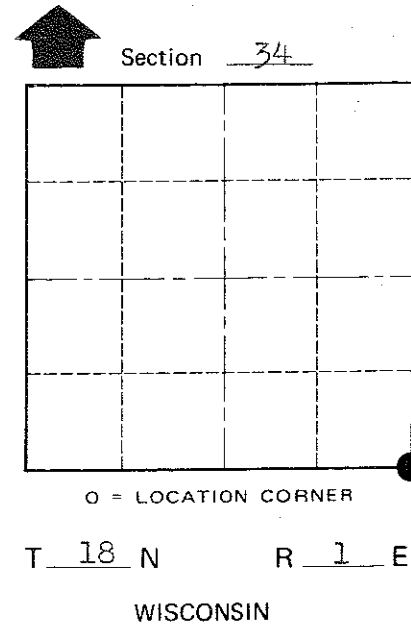
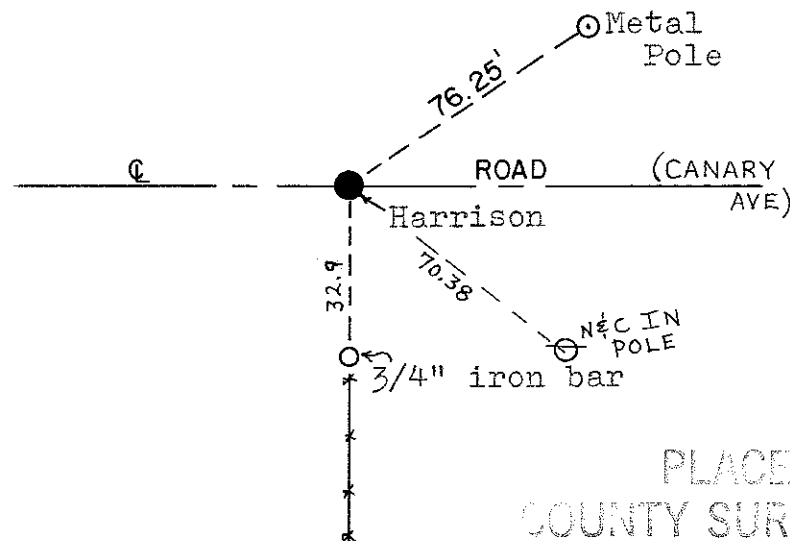
Found a Harrison marker in a gravel road with the top of the marker broken off. I searched again but could not find Holden's stone.

**Approved: HARLEY A. SIME
MONROE CO. SURVEYOR**

Description of corner and witness monuments, references and accessories used to perpetuate the original or re-established location of this corner:

Witnesses to corner location:

D. Marten
Crew: May 21, 1980
W. Jung *William Jung*
C. Dade
M. Sowers



PLACED
COUNTY SURVEYOR'S
SIGN 5-13-89

City, Village or Town Byron
County of Monroe

COUNTY SURVEYOR FORM NO. 1

SURVEY CONTROL ORDER

Horizontal	_____
Vertical	_____

WISCONSIN COORDINATE SYSTEM

Corner	East (X)	North (Y)	Elevation (Z)	Zone
Control Sta. Name				