

CERTIFICATE

CERTIFIED LAND CORNER

No. 8A

41801330030

I, Lawrence A. Feddersen, do hereby certify that on the 8th day of November 19 77, I found ~~evidence~~ (no evidence) of the Northwest corner of the NW¹/₄-NW¹/₄, Sec. 4, T 17 N, R 1 E, Fourth Principal Meridian, and I re-established said corner according to the Wisconsin Statutes as shown and described hereon.

Dated this 8 day of Nov. 19 77.

Lawrence A. Feddersen

Registered Land Surveyor
Title

History of original corner establishment:

No previous history.

Description of corner evidence found:

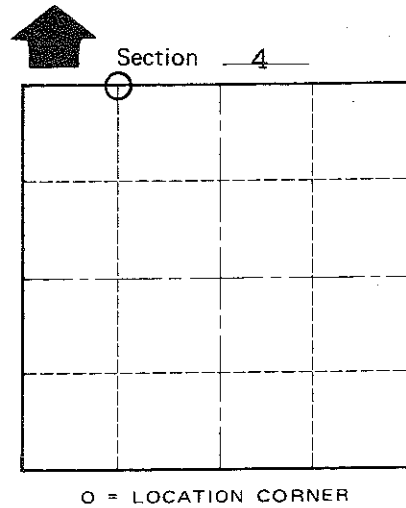
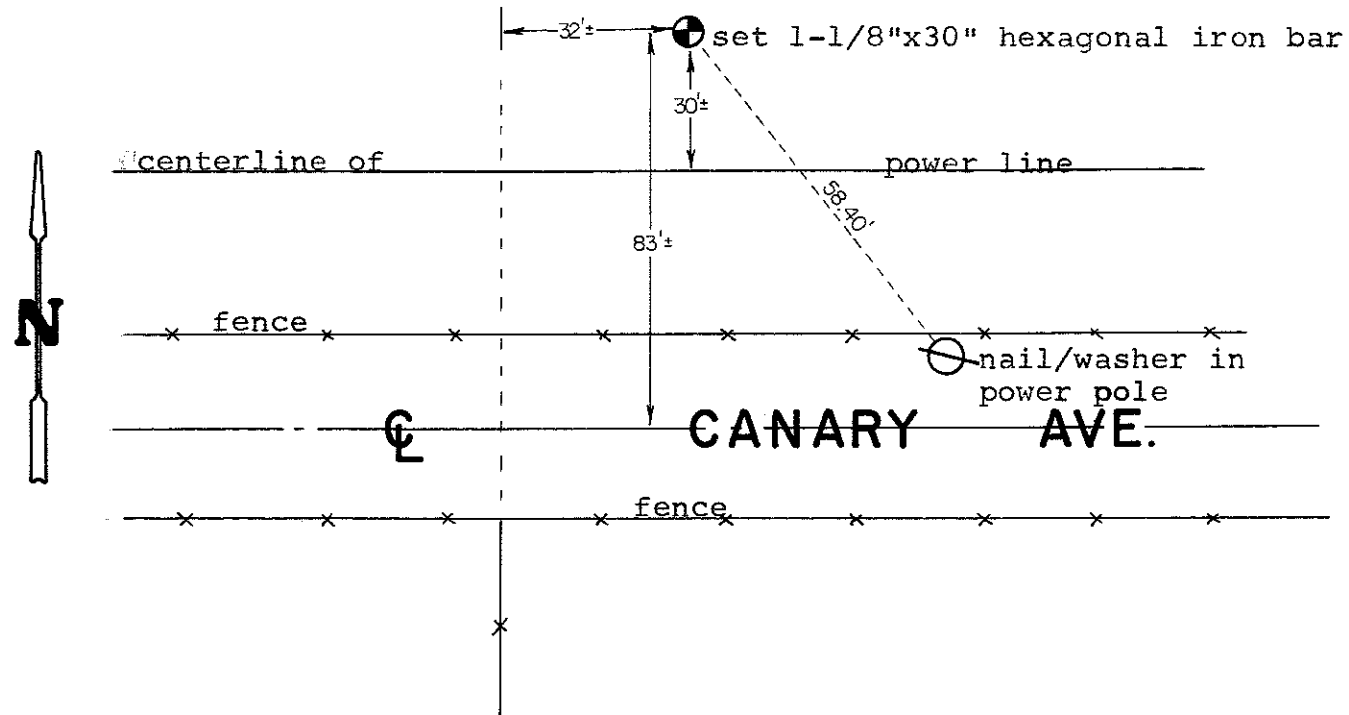
This corner was established half-way and on a straight line between the NW corner and the N¹/₄ corner of Sec. 4.

COUNTY SURVEYOR FORM NO. 1

Description of corner and witness monuments, references and accessories used to perpetuate the original or re-established location of this corner:

Witnesses to corner location:

Lawrence Feddersen
Mark Heidecke
Douglas Malliet



T 17 N R 1 E
WISCONSIN

SURVEY CONTROL ORDER

Horizontal	_____
Vertical	_____

WISCONSIN COORDINATE SYSTEM

Corner	East (X)	North (Y)	Elevation (Z)	Zone
Control Sta. Name				

~~XXXXXXXXXX~~ Town of Oakdale

County of Monroe