

# 8

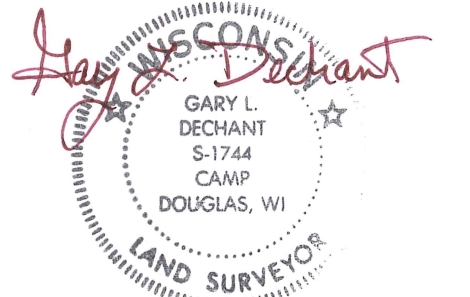
**U.S. PUBLIC LAND CORNER  
MAINTENANCE**

**Corner ID : S1/4 Sec.33, T18N-R1E  
41801330020**

<u>DATE</u>	<u>CREW</u>	<u>MONUMENT TYPE -----</u>
October 9 , 2017	Zachariah P. Dechant Gary L. Dechant	Existing mag nail over Harrison, 8' west of Franklin Road, 58' north of Grosbeak Ave. Distance checks to power pole 43.84' to the east of Feddersen's tie sheet. Other ties gone.

<u>References:</u>	<u>Bearing</u>	<u>Distance</u>
1) Set 3/4"x24" round iron bar, down 6", 4' north of north power pole	N88E	44.89'
2) Set 3/4"x24" round iron bar, down 6", 1' north of middle of steel gate	S4E	95.96'
3) Set 3/4"x24" round iron bar, down 6", 18' west of Franklin Road	S88W	10.76'
4) Set 3/4"x24" round iron bar, down 6", 19' west of Franklin Road	N4W	102.92'

**Mag nail/Harrison and reference markers set on straight lines.**

*Gary L. Dechant*  
  
*November 22, 2017*

I, Lawrence A. Feddersen, do hereby certify that on the 8<sup>th</sup> day of November 1977, I found ~~(evidence)~~ (no evidence) of the N<sup>1</sup>/<sub>4</sub> corner of Sec. 4, T 17 N, R 1 E, Fourth Principal Meridian, and I re-established said corner according to the Wisconsin Statutes as shown and described hereon.

Dated this 8 day of Nov. 1977.

Lawrence A. Feddersen

Registered Land Surveyor  
Title

History of original corner establishment:

Fred Holden had set a stone monument at this corner, but it was not found.

Description of corner evidence found:

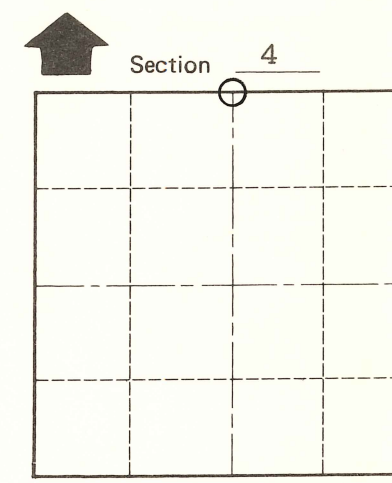
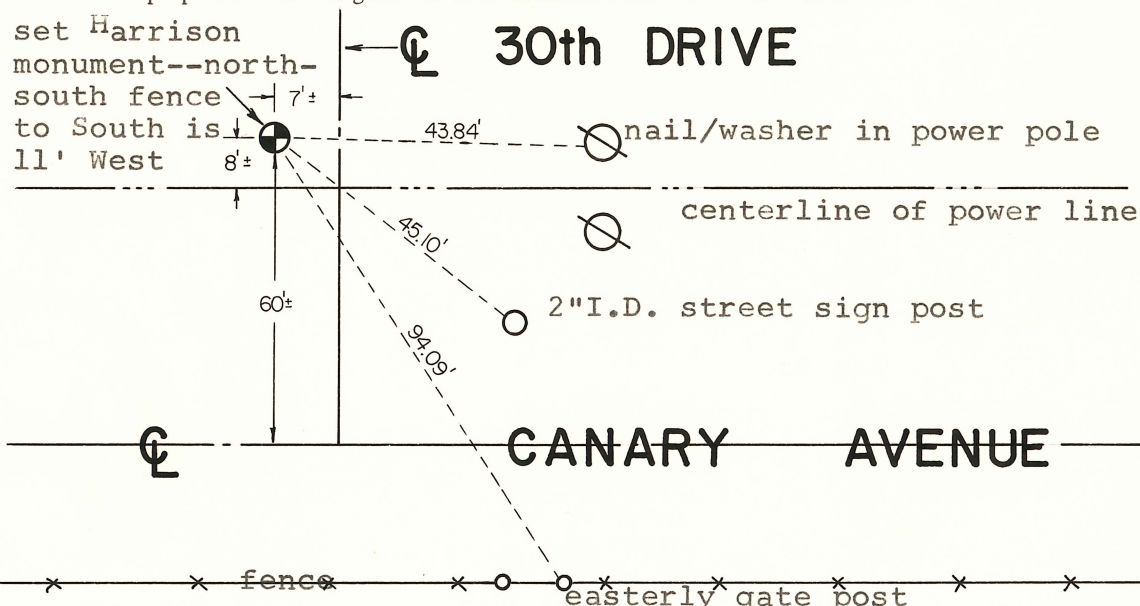
A Harrison monument was set at this corner half-way and on the straight line between the NW corner of Sec. 4 and a monument found at the NE corner of Sec. 4.

**See Reverse Side  
For Maintenance**

Description of corner and witness monuments, references and accessories used to perpetuate the original or re-established location of this corner:

Witnesses to corner location:

Lawrence Feddersen  
Mark Heidecke  
Douglas Malliet



O = LOCATION CORNER  
T 17 N R 1 E  
WISCONSIN

SURVEY CONTROL ORDER

Horizontal	_____
Vertical	_____

WISCONSIN COORDINATE SYSTEM

Corner	East (X)	North (Y)	Elevation (Z)	Zone
Control Sta. Name				

City, Village or Town of Oakdale

County of Monroe

**PLACED  
COUNTY SURVEYOR'S  
SIGN 6-12-87**

COUNTY SURVEYOR FORM NO. 1