

# 9

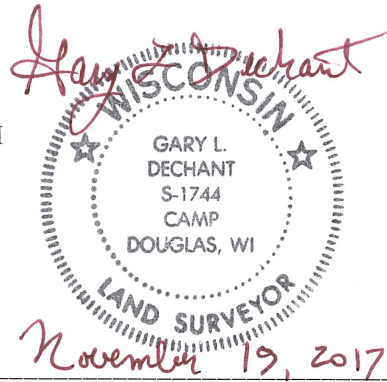
**U.S. PUBLIC LAND CORNER  
MAINTENANCE**

**Corner ID : SE Sec. 32, T18N-R1E  
41801320000**

<u>DATE</u>	<u>CREW</u>	<u>MONUMENT TYPE -----</u>
October 9, 2017	Zachariah P. Dechant Gary L. Dechant	Existing Harrison intact, down 20" in pasture. Low lands. Need pail for baling water. Set survey sign 2' north. 105' north of Grosbeak Ave. All ties gone.

<u>References:</u>	<u>Bearing</u>	<u>Distance</u>
1) Set 3/4"x24" round iron bar, down 6", 3' NW of mail box, 18' north of road	S24°20'00"E	98.45'
2) Set 3/4"x24" round iron bar, down 6", 121' west of NW corner of pole shed south of road at 30093 Grosbeak Ave, 47' west of driveway	S24°20'00"E	208.00'
3) Set 3/4"x24" round iron bar 18' north of Grosbeak Ave	S2°33'10"W	87.05'
4) Set 3/4"x24" round iron bar 18' north of Grosbeak Ave	S19°36'40"W	90.50'
5) Existing 1" iron pipe	Approx. East	28.43'

**Bearings on ASSUMED NORTH**



I, Lawrence A. Feddersen, do hereby certify that on the 8<sup>th</sup> day of November 1977, I found ~~(evidence)~~ (no evidence) of the Northeast corner of Sec. 5, T17 N, R 1 E, Fourth Principal Meridian, and I re-established said corner according to the Wisconsin Statutes as shown and described hereon.

Dated this 8 day of Nov. 1977.

Lawrence A. Feddersen

Registered Land Surveyor  
Title

History of original corner establishment:

Fred Holden found the original corner and set a stone at that location. The stone was not found.

Description of corner evidence found:

A Harrison monument was set at the corner by extending South on a straight line and doubling the distance on that line between stone monuments found at the E<sup>1</sup>/<sub>4</sub> corner of Sec. 32, T18N-R1E & the NE corner of the SE<sup>1</sup>/<sub>4</sub>-SE<sup>1</sup>/<sub>4</sub>, Sec. 32, T18N-R1E. These stones were set by Holden in 1904.

**See Reverse Side For Maintenance**

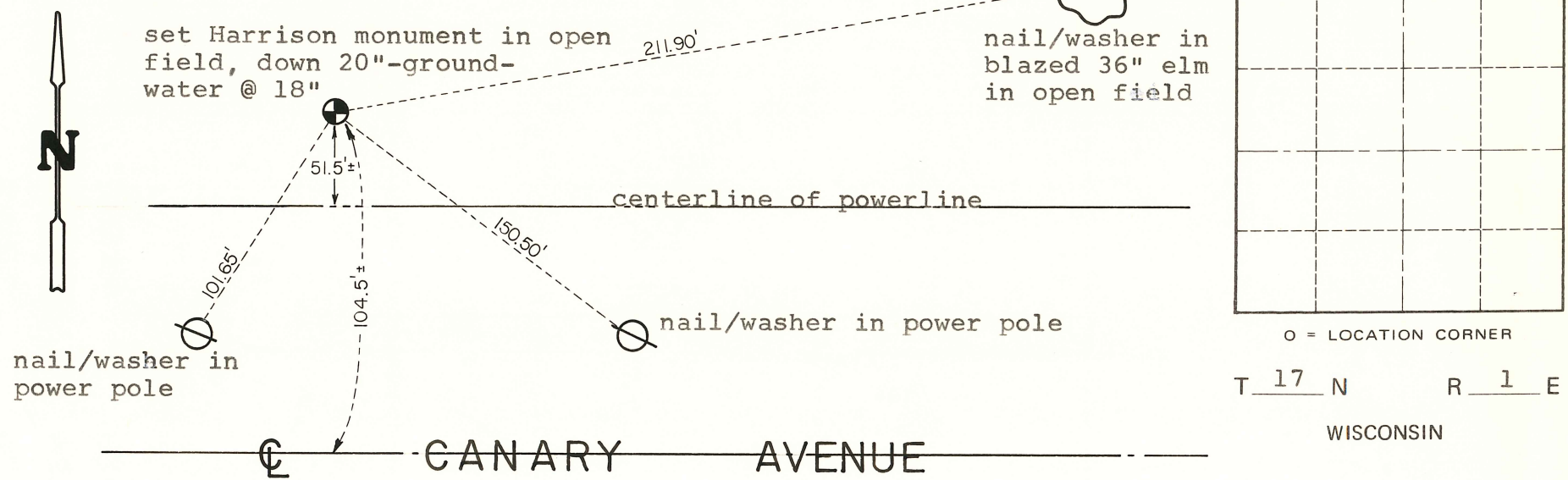
Description of corner and witness monuments, references and accessories used to perpetuate the original or re-established location of this corner:

Witnesses to corner location:

Lawrence Feddersen

Mark Heidecke

Douglas Malliet



COUNTY SURVEYOR FORM NO. 1

SURVEY CONTROL ORDER

Horizontal	_____
Vertical	_____

WISCONSIN COORDINATE SYSTEM

Corner	East (X)	North (Y)	Elevation (Z)	Zone
Control Sta. Name				

~~City, Village or~~ Town of Oakdale

County of Monroe