

# 132 / 12

**U.S. PUBLIC LAND CORNER  
MAINTENANCE**

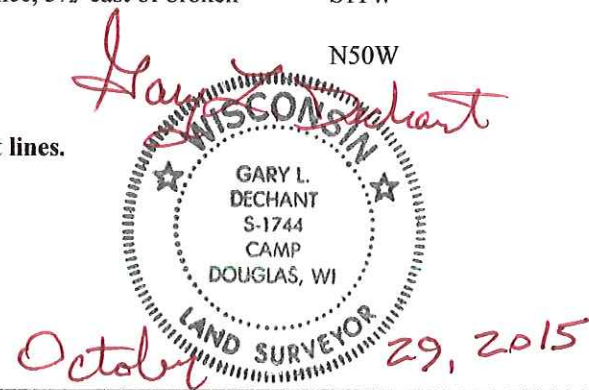
**Corner ID :** S1/4 Sec.31, T18N-R1E  
**41801310020**

<u>DATE</u>	<u>CREW</u>	<u>MONUMENT TYPE</u> -----
September 3, 2015	Zachariah P. Dechant Gary L. Dechant	Existing Harrison, intact, down 3". 15' north Grosbeak center line.

References:

	<u>Bearing</u>	<u>Distance</u>
1) Set 3/4"x24" round iron bar, down 6",	N11E	62.70'
2) Set 3/4"x24" round iron bar, down 6" in center line field entrance	S50E	81.71'
3) Reset 3/4"x24" round iron bar, down 6", in east-west fence, 3 1/2' east of broken concrete post	S11W	62.95' (69.39' ?)
4) Set 3/4"x24" round iron bar, down 6"	N50W	92.78'

**Harrison and reference markers set on straight lines.**



I, Gary L. Dechant, do hereby certify that on the 23rd day of December 1986, I found ~~(evidence)~~ (no evidence) of the N<sup>1</sup>/<sub>4</sub> corner of Section 6, T17N N, R 1 E Fourth Principal Meridian, and I re-established said corner according to the Wisconsin Statutes as shown and described hereon.

Dated this 7th day of Jan 1987.

Gary L. Dechant  
Registered Land Surveyor, 1744  
Title

History of corner establishment since Original Government Survey

Fred Holden set an iron pipe here in 1904.

Description of corner evidence found:

Could not find Holden's iron pipe. Set corner on straight line and at prorated distance between section corners.

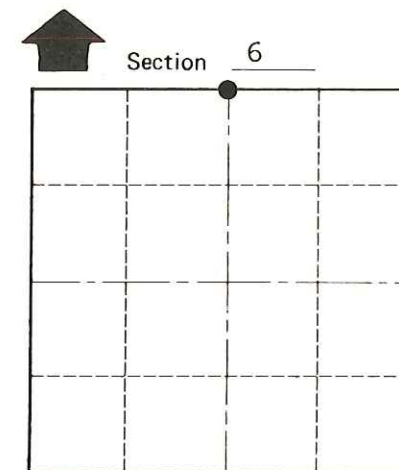
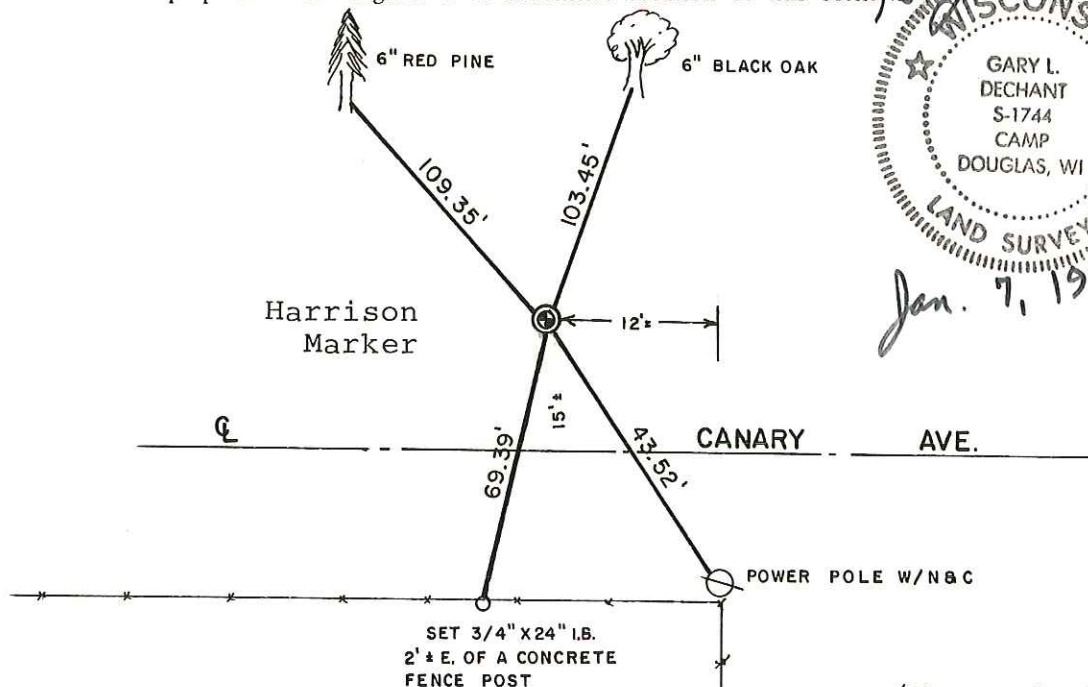
**See Reverse Side  
For Maintenance**

Description of corner and witness monuments, references and accessories used to perpetuate the original or re-established location of this corner:

Witnesses to corner location:

David E, Madison

Gary L. Dechant



● = LOCATION CORNER  
T 17 N R 1 E  
WISCONSIN

SURVEY CONTROL ORDER

Horizontal	_____
Vertical	_____

WISCONSIN COORDINATE SYSTEM

Corner	East (X)	North (Y)	Elevation (Z)	Zone
Control Sta. Name				

(Trees double blazed with N&C's set)

~~City, Village or~~ Town Oakdale  
County of Monroe

COUNTY SURVEYOR FORM NO. 1