

# 131 / 11

**U.S. PUBLIC LAND CORNER  
MAINTENANCE**

**Corner ID :** SE Sec.31, T18N-R1E  
**41801310000**

<u>DATE</u>	<u>CREW</u>	<u>MONUMENT TYPE</u> -----
September 3, 2015	Zachariah P. Dechant Gary L. Dechant	Existing Harrison, intact, 55' north Grosbeak center line. 23 ' east driveway fire no. 29078

References:

	<u>Bearing</u>	<u>Distance</u>
1) Set 3/4"x24" round iron bar, down 6",	N26E	48.00'
2) Set 3/4"x24" round iron bar, down 6"	East	21.97'
3) Set 3/4"x24" round iron bar, down 6", west of driveway east of power pole	N88W	31.34'
4) Set 3/4"x24" round iron bar, down 6" , 9' east of driveway, 3' west of Haven sign	N16W	48.74'

*Gary L. Dechant*  
  
*October 29, 2015*

I, Gary L. Dechant, do hereby certify that on the 23rd day of December 19 86, I found ~~(evidence)~~ (no evidence) of the NE corner of Section 6, T 17 N, R 1 E Fourth Principal Meridian, and I re-established said corner according to the Wisconsin Statutes as shown and described hereon.

Dated this 8th day of Jan. 19 87.

Gary L. Dechant  
Registered Land Surveyor, 1744  
Title

History of corner establishment since Original Government Survey

Fred Holden set an iron pipe here in 1904.

See Reverse Side  
For Maintenance

Description of corner evidence found:

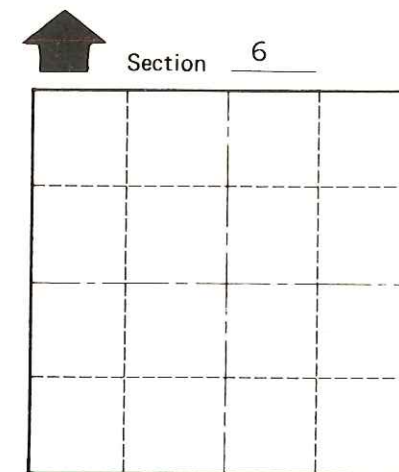
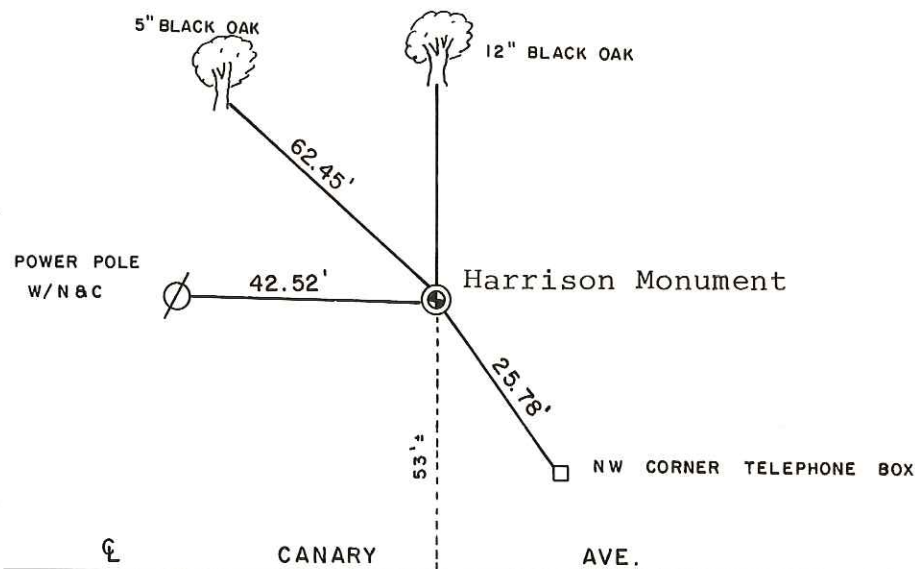
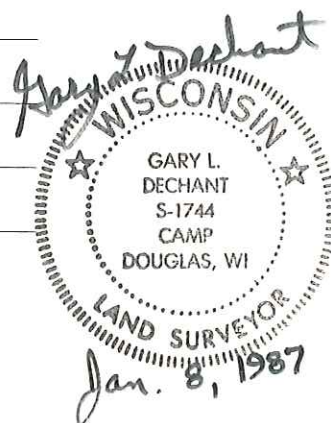
Could not find Holden's iron pipe, reset corner on a straight line and at a prorated distance between the NW corner of Section 6 and the NE corner of Section 5.

Description of corner and witness monuments, references and accessories used to perpetuate the original or re-established location of this corner:

Witnesses to corner location:

David E. Madison

Gary L. Dechant



● = LOCATION CORNER  
T 17 N R 1 E  
WISCONSIN

(Trees double blazed with N&C's set)

SURVEY CONTROL ORDER

Horizontal	_____
Vertical	_____

WISCONSIN COORDINATE SYSTEM

Corner	East (X)	North (Y)	Elevation (Z)	Zone
Control Sta. Name				

~~City, Village or~~ Town Oakdale  
County of Monroe

COUNTY SURVEYOR FORM NO. 1