

**U.S. PUBLIC LAND CORNER  
MAINTENANCE**

# 95

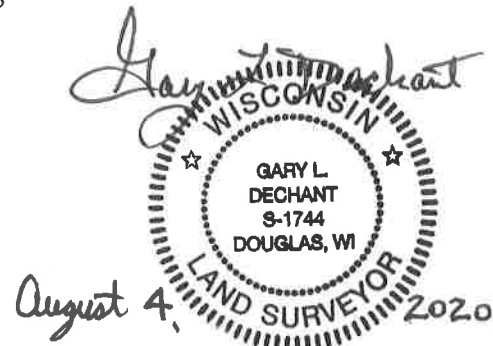
Corner ID: E1/4 Sec.30, T18N-R1E

41801302000

<u>DATE</u>	<u>CREW</u>	<u>MONUMENT INFO</u>
August 3, 2020	Zachariah P. Dechant Gary L. Dechant	Found deteriorated 2½" iron pipe in swamp, all previous ties in bad shape or gone. Set 1"x7' hexagon steel shaft with small flange near top inside of 2 ½" iron pipe. Set new sign 1' west.

<u>Compass Bearing</u>	<u>Distance</u>
------------------------	-----------------

- |   |      |         |
|---|------|---------|
| 1) Set 2' section of steel T post, 27' NW of 14" White Pine | S70E | 91.14'  |
| 2) Set 2"x24" iron pipe, up 4", 8' NW of 14" White Pine     | S70E | 110.49' |
| 3) Set 2"x3' angle iron in swamp up 3"                      | S21W | 28.07'  |
| 4) Set 6' steel T post, up 12"                              | N57W | 20.12'  |



CERTIFICATE

CERTIFIED LAND CORNER

History of corner establishment since Original Government Survey

Fred Holden was here in December of 1904 and set a piece of a mower sickle.

Description of corner evidence found:

Accepted 3-way fence corner as the best available evidence. Could not find Holdens monument for the corner.

I, Garold A. Sime, do hereby certify that on the 11<sup>th</sup> day of October 19 83, I found (evidence) ~~no evidence~~ of the West 1/4 corner of Section 29, T 18 N, R 1 E Fourth Principal Meridian, and I re-established said corner according to the Wisconsin Statutes as shown and described hereon.

Dated this 19<sup>th</sup> day of Jan. 19 84.

Garold A. Sime  
Deputy County Surveyor  
Title

See Reverse Side For Maintenance

COUNTY SURVEYOR FORM NO. 1

Description of corner and witness monuments, references and accessories used to perpetuate the original or re-established location of this corner:

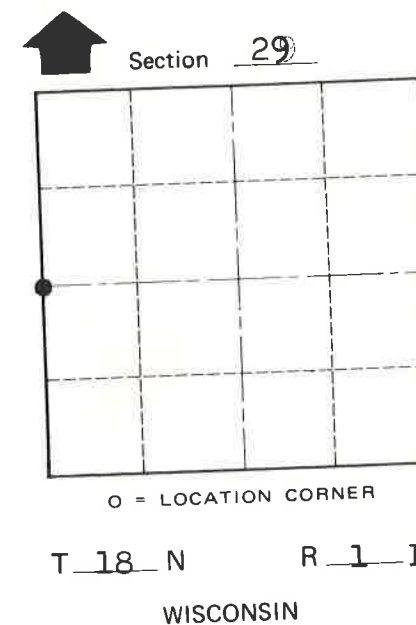
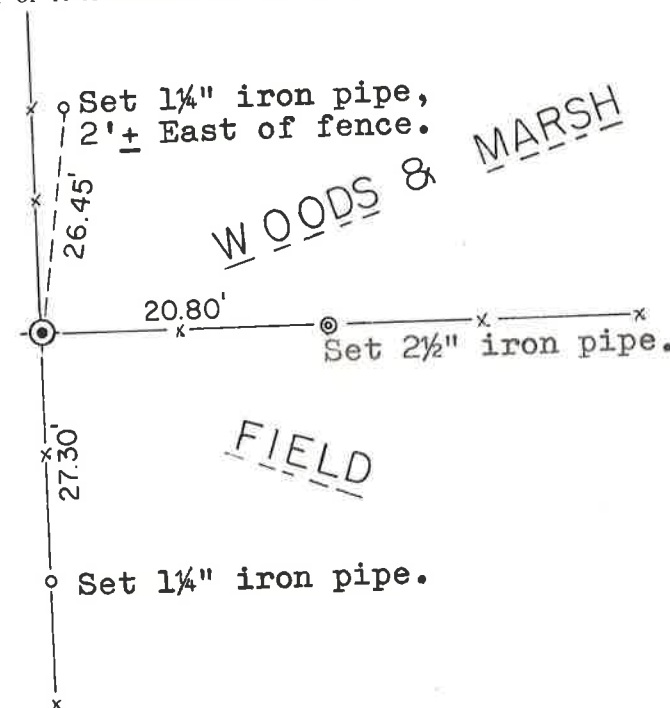
Witnesses to corner location:

Gary Sime

Dallas Wilhite



MARSH  
Set 2 1/2" x 5' iron pipe, up 1' ±.



Approved: **HARLEY A. SIME**  
**MONROE CO. SURVEYOR**

PLACED  
COUNTY SURVEYOR'S  
SIGN 6-22-87

SURVEY CONTROL ORDER

Horizontal \_\_\_\_\_  
Vertical \_\_\_\_\_  
Corner \_\_\_\_\_  
Control Sta. Name \_\_\_\_\_

WISCONSIN COORDINATE SYSTEM

	East (X)	North (Y)	Elevation (Z)	Zone
Corner				
Control Sta. Name				

~~City, Village or~~ Town of Byron  
County of Monroe