

**U.S. PUBLIC LAND CORNER
MAINTENANCE**

96

Corner ID: E1/4 Sec.29, T18N-R1E

41801292000

<u>DATE</u>	<u>CREW</u>	<u>MONUMENT INFO</u>
August 3, 2020	Zachariah P. Dechant Gary L. Dechant	Found 2½" iron pipe in dike, down 32", Set Harrison Monument over 2 ½" iron pipe. Falls 2' north of center of dike. Now reservoir all sides of dike.

Compass Bearing Distance

- | | | |
|---|------|--------|
| 1) Set 2' section of steel T post, center of dike, 28' south of cut (ditch) thru dike | N43E | 31.74' |
| 2) Set 2' section of T post, center of dike | N55E | 17.38' |
| 3) Set 2' section of T post, center of dike | S72W | 18.66' |
| 4) Set 2' section of T post, center of dike | S74W | 40.61' |

Gary L. Dechant
GARY L. DECHANT
S-1744
DOUGLAS, WI
LAND SURVEYOR
August 4, 2020

I, Bryan H. Meyer, do hereby certify that on the 12th day of August 19 83, I found (evidence) ~~(no evidence)~~ of the East 1/4 corner of Section 29, T 18 N, R 1 E Fourth Principal Meridian, and I re-established said corner according to the Wisconsin Statutes as shown and described hereon.

Dated this 23rd day of Dec. 19 83.

Bryan H. Meyer
Deputy County Surveyor
Title

History of corner establishment since Original Government Survey

Nothing Recorded.

UPDATE: No recorded history since this corner was re-established in August of 1983.

Description of corner evidence found:

Accepted 3-way fence corner as the best available evidence.

UPDATE: Found the 2 1/2" iron pipe at the corner in it's previous location. The 3/4" iron bar to the Northeast is apparently under the new dike. The 10" Maple is now dead and broken off. The 9" Double Elm is now dead but still standing. Got new ties as shown below.



COUNTY SURVEYOR FORM NO. 1

Description of corner and witness monuments, references and accessories used to perpetuate the original or re-established location of this corner:

Crew: Meyer, Wilhite
Date: August 12, 1983 - 10:00 A.M.
Weather: P. Cloudy, Humid, 80°±.

Witnesses to corner location:

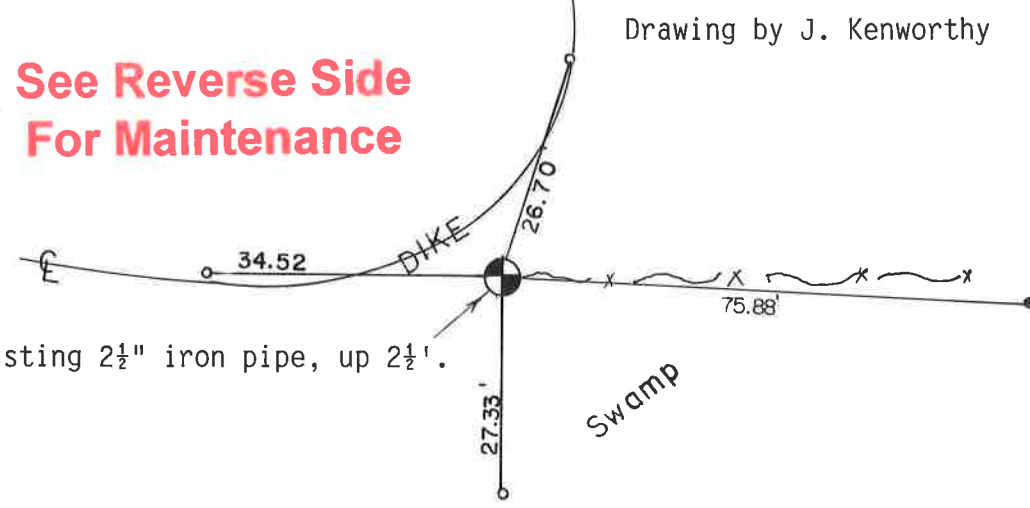
Bryan H. Meyer

Dallas Wilhite

APPROVED: Harley A. Sime
Monroe County Surveyor

SURVEY CONTROL ORDER

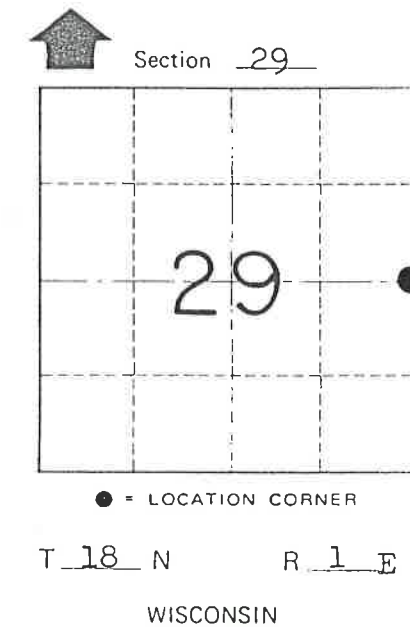
Horizontal	
Vertical	
Corner	East (X)
Control Sta. Name	



Existing 2 1/2" iron pipe, up 2 1/2'.

- o = Set 3/4"x24" round iron bar.
- = Existing 3/4" round iron bar.

1990 Crew: Bryan Meyer, Brian Forsythe
January 30, 1990
Clear, Windy, 15°±



WISCONSIN COORDINATE SYSTEM

North (Y)	East (X)	Elevation (Z)	Zone

~~City, Village or~~ Town of Byron
County of Monroe

I, Bryan H. Meyer, do hereby certify that on the 12th day of August 1983, I found (evidence) ~~no evidence~~ of the East 1/4 corner of Section 29, T 18 N, R 1 E Fourth Principal Meridian, and I re-established said corner according to the Wisconsin Statutes as shown and described hereon.

Dated this 23rd day of Dec. 1983.

Bryan H. Meyer
Deputy County Surveyor
Title

History of corner establishment since Original Government Survey

Nothing Recorded.

Description of corner evidence found:

Accepted 3-way fence corner as the best available evidence.

See Reverse Side For Maintenance



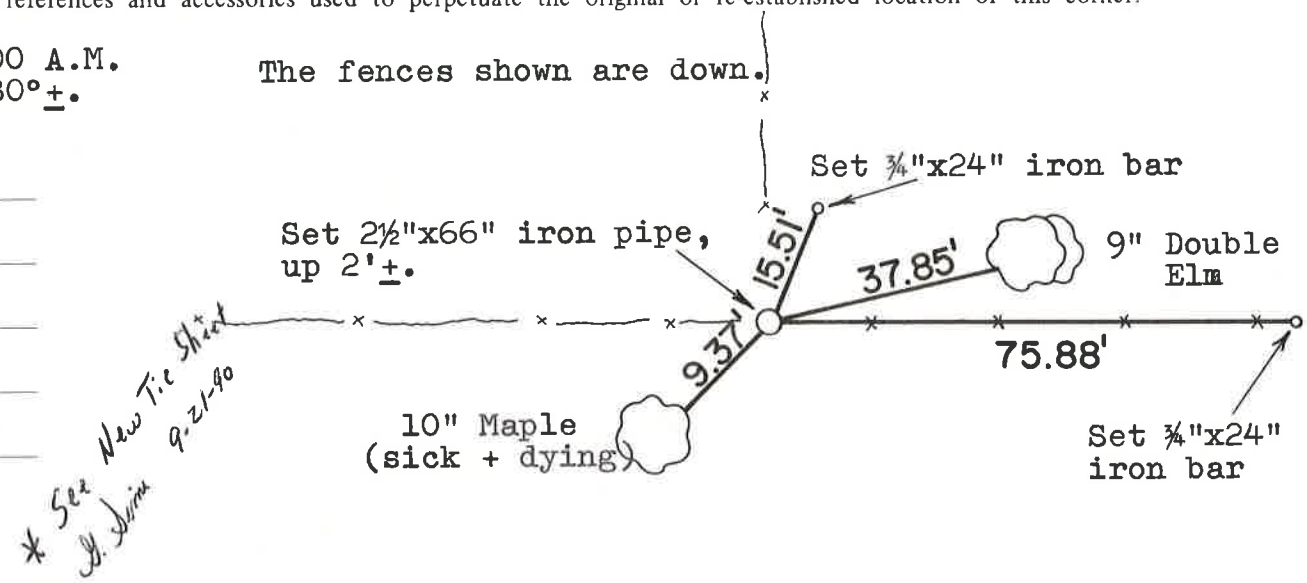
Description of corner and witness monuments, references and accessories used to perpetuate the original or re-established location of this corner:

Crew: Meyer, Wilhite
Date: August 12, 1983 - 10:00 A.M.
Weather: P. Cloudy, Humid, 80°±.
Witnesses to corner location:

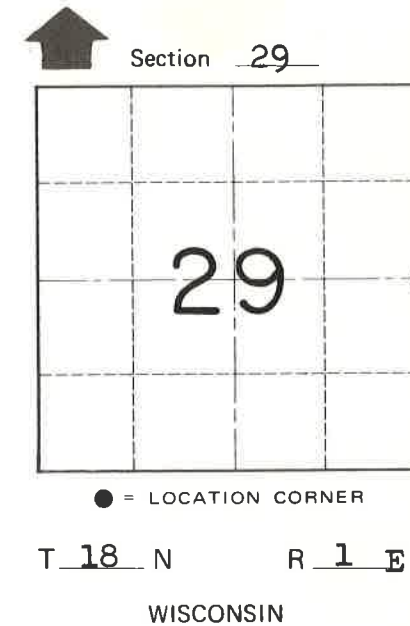
Bryan H. Meyer

Dallas Wilhite

APPROVED: Harley A. Sime
Monroe County Surveyor



The trees shown are double blazed with the blazes facing the corner. The distances shown are to nails set in hacks in the sides of the trees.



COUNTY SURVEYOR FORM NO. 1

SURVEY CONTROL ORDER

Horizontal	_____
Vertical	_____

WISCONSIN COORDINATE SYSTEM

Corner	East (X)	North (Y)	Elevation (Z)	Zone
Control Sta. Name				

~~City~~ Village of Town of Byron
County of Monroe