

110

**U.S. PUBLIC LAND CORNER
MAINTENANCE**

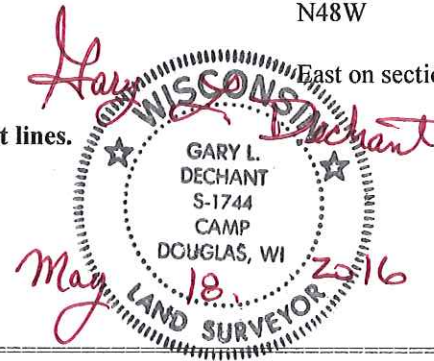
**Corner ID : S1/4 Sec. 29, T18N-R1E
41801290020**

DATE	CREW	MONUMENT TYPE -----
May 18, 2016	Zachariah P. Dechant Gary L. Dechant	Existing Harrison, top broke off, down 12" in thick, hard asphalt. 2' West & 2' south of intersection of CTH "N" CTH "ET", Fountain Ave. Set mag nails 2' north and west. Only remaining tie to SE, tele box 66.15'

Reference Markers:

	<u>Bearing</u>	<u>Distance</u>
1) Set 3/4"x24" round iron bar, down 10", 10' east of utility ped & post	N40E	61.37'
2) Set 3/4" x 4' round iron bar, down 6" in lawn	S48E	73.22'
3) Set 3/4" x24" round iron bar, down 6", in lawn	S40W	52.82'
4) Set 3/4"x24" round iron bar, down 12" in field	N48W	64.69'
5) Existing 3/4" round iron bar in Fountain Ave	East on section line	300.00' (300.00')

Harrison & reference markers are set on straight lines.



I, Lawrence A Feddersen, do hereby certify that on the 1 day of December 19 77, I found (evidence) ~~(XXXXXXXX)~~ of the N $\frac{1}{4}$ corner of Section 32, T 18 N, R 1 E, Fourth Principal Meridian, and I re-established said corner according to the Wisconsin Statutes as shown and described hereon.

Dated this 1 day of DEC. 19 77.

Lawrence A Feddersen

Registered Land Surveyor
Title

History of original corner establishment:

Fred Holden set a 1½" iron pipe at this corner in 1905.

Description of corner evidence found:

A 1½" iron pipe, too recent to have been set by Holden, was found at the intersection of the road centerlines North-South and East-West. The iron pipe was replaced by a Harrison monument.

See Reverse Side For Maintenance

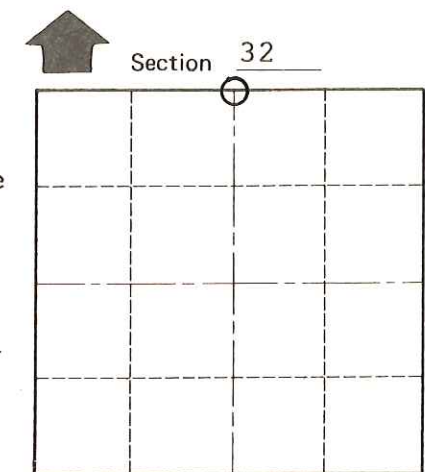
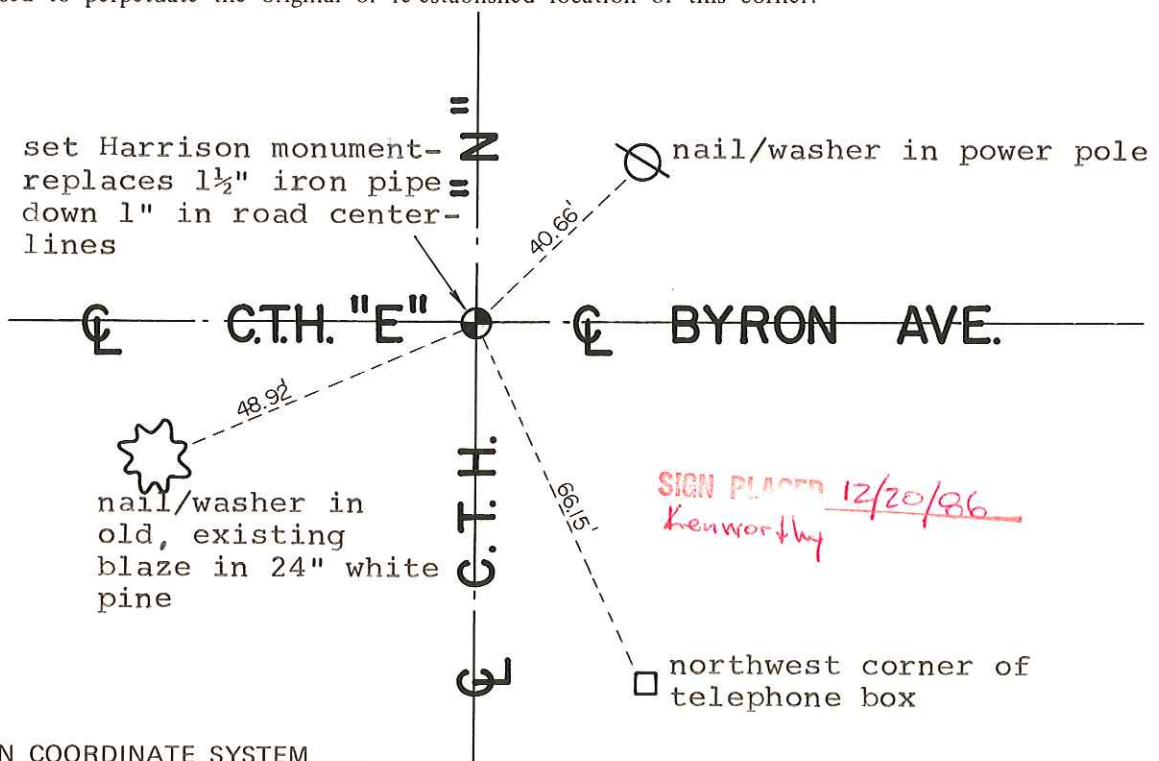
Description of corner and witness monuments, references and accessories used to perpetuate the original or re-established location of this corner:

Witnesses to corner location:

Lawrence Feddersen

Mark Heidecke

Douglas Malliet



O = LOCATION CORNER
T 18 N R 1 E
WISCONSIN

SURVEY CONTROL ORDER

Horizontal	_____
Vertical	_____

WISCONSIN COORDINATE SYSTEM

Corner	East (X)	North (Y)	Elevation (Z)	Zone
Control Sta. Name				

~~City, Village or Town of~~ Byron

County of Monroe

COUNTY SURVEYOR FORM NO. 1