

109

**U.S. PUBLIC LAND CORNER
MAINTENANCE**

Corner ID : SE Sec.29, T18N-R1E

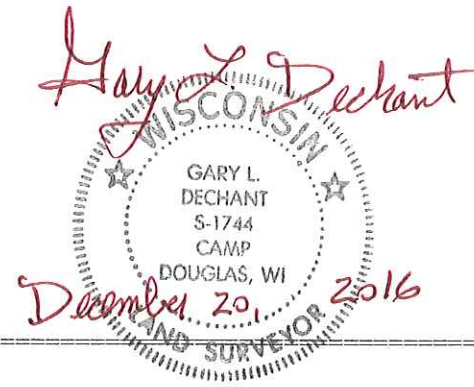
41801290000

<u>DATE</u>	<u>CREW</u>	<u>MONUMENT TYPE</u> -----
September 1, 2016	Zachariah P.Dechant Gary L. Dechant	Existing Harrison , down 1", east of Foxfire Road/Fountain Ave intersection

References:

	<u>Bearing</u>	<u>Distance</u>
1) Set 3/4"x24" round iron bar, down 8", 2' east of sign with concrete posts	N28E	35.84'
2) Set 3/4"x24" round iron bar, down 12"	S34E	56.49'
3) Set 3/4"x24" round iron bar , down 6", center of gate	S28W	39.03'
4) Set 3/4"x24" round iron bar, down 6", 11' west of Foxfire Road	N34W	59.30'

HARRISON & REFERENCE MARKERS SET
ON STRAIGHT LINES.



I, Lawrence A. Feddersen, do hereby certify that on the 5th day of December 1977, I found ~~(evidence)~~ (no evidence) of the Northeast corner of Section 32, T18 N, R1 E, Fourth Principal Meridian, and I re-established said corner according to the Wisconsin Statutes as shown and described hereon.

Dated this 5 day of DEC. 1977.

Lawrence A. Feddersen
Registered Land Surveyor
Title

History of original corner establishment:

In 1903 Fred Holden set a stone at this corner, but it was not found.

See Reverse Side For Maintenance

Description of corner evidence found:

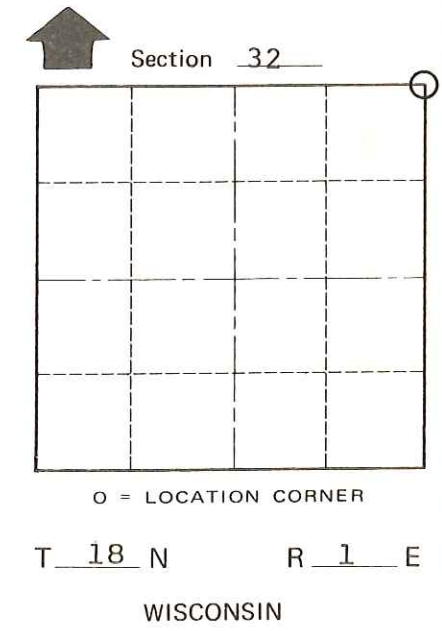
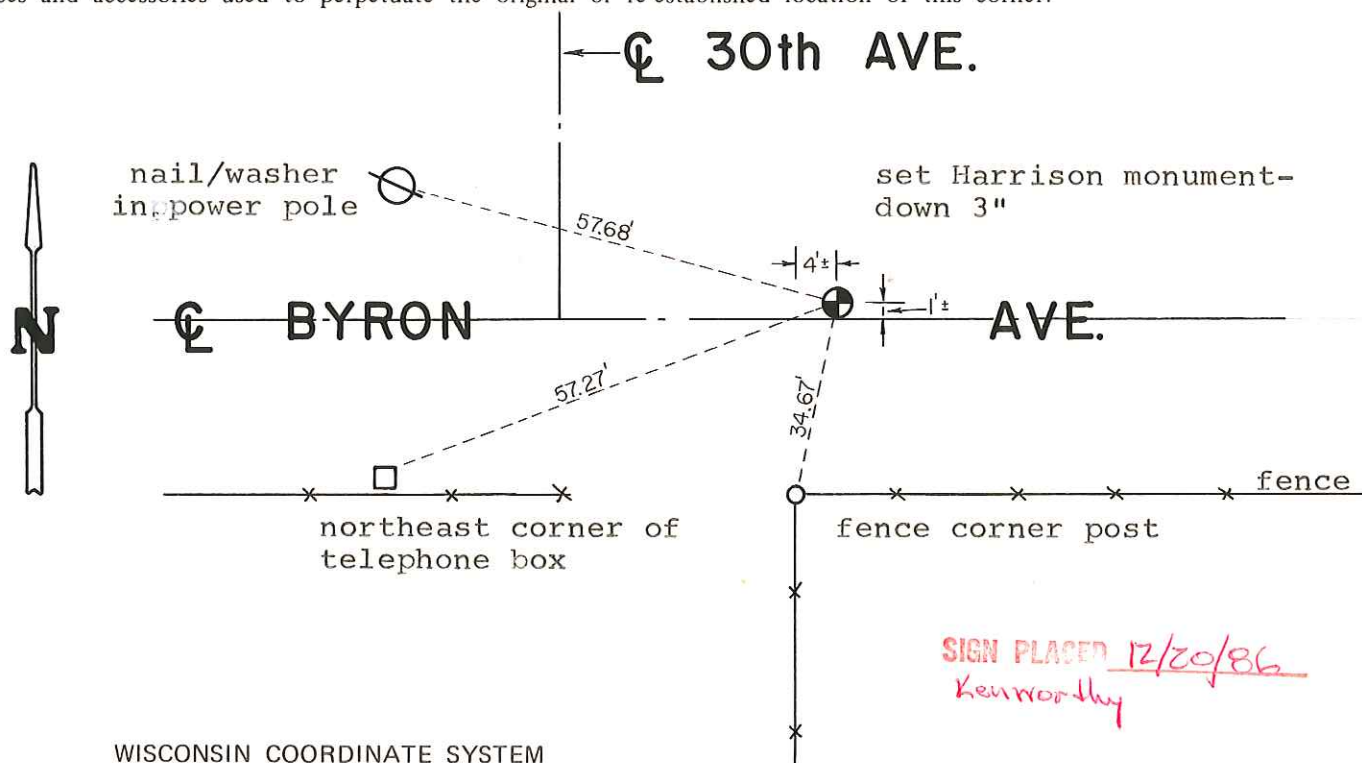
A Harrison monument was set at this corner on a straight line between the N $\frac{1}{4}$ corner of Sec. 32 and the N $\frac{1}{4}$ corner of Sec. 33 and at the same distance West from the N $\frac{1}{4}$ corner of Sec. 33 as was measured ^{BETWEEN} the N $\frac{1}{4}$ corner of Sec. 33 and the NE corner of Sec. 33. The total distance for the North line of Sec. 33 fits Holden's recorded distance within reason and the corner aligns well with an old fence to the South.

COUNTY SURVEYOR FORM NO. 1

Description of corner and witness monuments, references and accessories used to perpetuate the original or re-established location of this corner:

Witnesses to corner location:

Lawrence Feddersen
Mark Heidecke
Douglas Malliet



SURVEY CONTROL ORDER

Horizontal _____
Vertical _____

WISCONSIN COORDINATE SYSTEM

Corner	East (X)	North (Y)	Elevation (Z)	Zone
Control Sta. Name				

SIGN PLACED 12/20/86
Kenworthy

City, Village or Town of Byron
County of Monroe