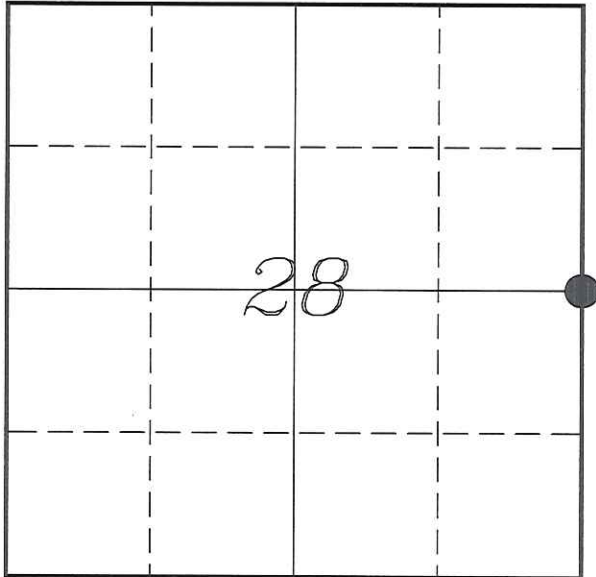


U. S. PUBLIC LAND SURVEY MONUMENT RECORD

SECTION 28, T18N, R1E, TOWN OF BYRON
MONROE COUNTY, WISCONSIN



LOCATION OF LANDMARK

MONROE COUNTY COORDINATE SYSTEM	
Northing	402288.023
Easting	741779.215
Datum	NAD 1983 (1991)
Elevation	
Datum	
TYPE OF LANDMARK:	
Set Harrison Monument	
BEARINGS ARE REFERENCED TO:	
Monroe County Coordinates	

Witnesses: Laurence E Johns III

Date: 4 January 2014

Describe any record evidence, monument evidence, testimonial evidence or any other material evidence you considered and whether the monument was found or restored through acceptance of an obliterated evidence location.

No bearing trees of record were located.

I found a partial 3-way fence corner. Very strong North & South and only a single strand to the West for only a few feet. Also a double post at the corner.

Computations indicate that Hefner's corner and Heidecke's corner are within a foot of each other. They also indicate that the Harrison shown on Hefner's survey would fit the fence corner that I found. No monument was located.

This location is about 9' West of the straight line between the NE & SE Corners.

The fence corner is within reason of government distance to the North but is about 100' feet long to the South.

This fence corner is a good occupational corner and it fits government distances to the North. It appears that Heidecke used this fence corner during his survey.

I accepted this fence corner as best evidence of the original government corner and placed a Harrison Monument.

Describe or show any material discrepancy between the location of the restored corner and that of the corner previously restored or re-established.

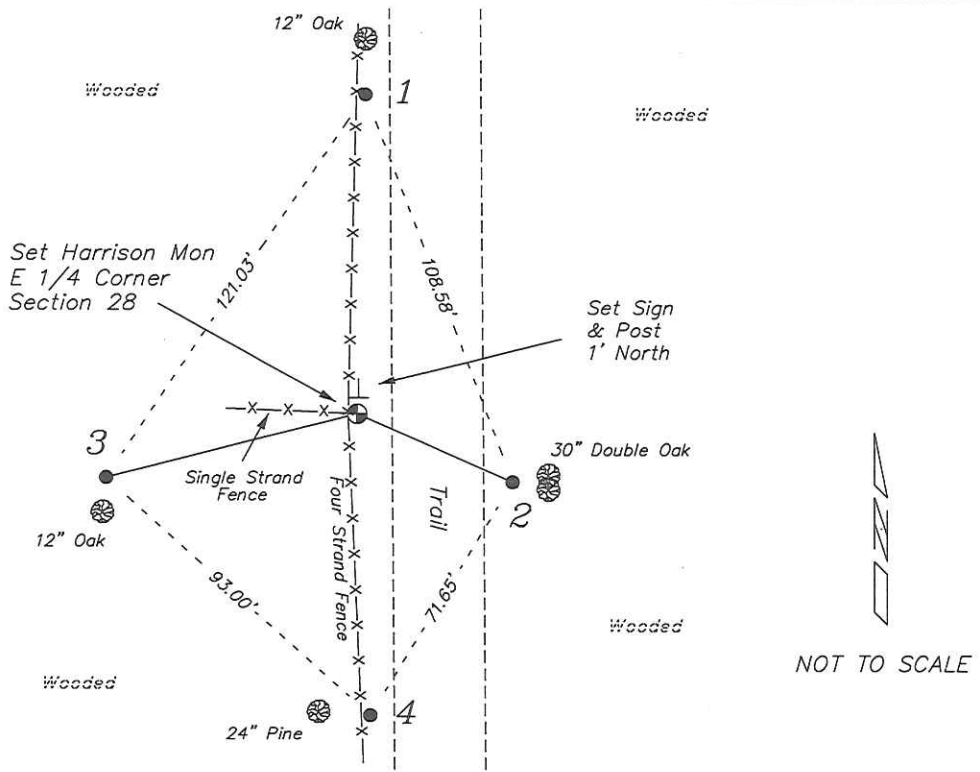
George Cole established this corner in November 1851.

Mark Heidecke shows this corner on a survey, in July 1979. He does not show a monument at this corner.

Dwayne Hefner was at this corner, in May 2007, during a survey in Section 28. He shows a found Harrison Monument at the corner.

RECORD OF DURABLE WITNESS MONUMENTS

NO	DESCRIPTION	BEARING	DISTANCE
1	Set 3/4" x 18" Iron Rod In Fence - 3' South of a 12" Oak	N 01°29'12" E	83.88'
2	Set 3/4" x 18" Iron Rod 2' West of a 30" Double Oak	S 66°22'22" E	44.23'
3	Set 3/4" x 18" Iron Rod In Fence - 4' East of a 24" Pine	S 02°26'32" E	79.06'
4	Set 3/4" x 18" Iron Rod 2' North of a 12" Oak	S 75°52'17" W	67.54'



PLAN VIEW DRAWING OF REFERENCE TIES

Map Showing Distance And Direction To Other Public Land Survey
Corners Used For Re-Establishing The Corner



I, Laurence E Johns III RLS 2804, Registered Land Surveyor, hereby certify that the corner location shown on this record was determined by me or under my direction and control, and that this U.S. Public Land Survey Monument Record is correct and complete to the best of my knowledge and belief.

Laurence E. Johns III
Laurence E Johns III / RLS 2804
Eagle Ridge Surveying, LLC
PO Box 213
Wilton, Wisconsin
5 January 2014

