

108

**U.S. PUBLIC LAND CORNER
MAINTENANCE**

Corner ID : S1/4 Sec. 28 T18N-R1E

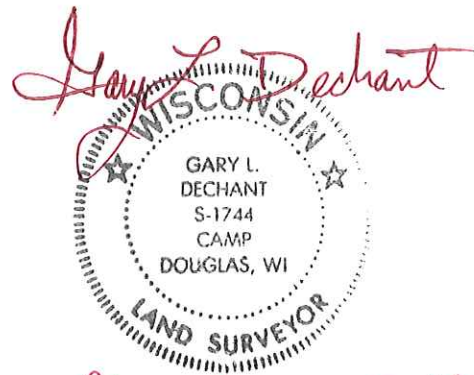
41801280020

<u>DATE</u>	<u>CREW</u>	<u>MONUMENT TYPE -----</u>
August 31, 2016	Zachariah P.Dechant Gary L. Dechant	Existing Harrison, top broke off. Down 8". 1.5' south & 22' east of Franklin Road/Fountain Ave intersection

References:

	<u>Bearing</u>	<u>Distance</u>
1) Set 3/4"x24" round iron bar, down 6", between Pines	N34E	59.14'
2) Set 3/4"x24 round iron bar, down 6", 7' NW of 26" White Oak (BT)	S30E	91.29'
3)Set 3/4"x24" round iron bar, down 6", 3' NE of weight limit sign 15' west of Franklin Road	S34W	64.13'
4) Set 3/4"x24" round iron bar, down 6", 6' NW of 22" Black Oak 9' west of shallow ditch	N30W	83.02'

Harrison & reference markers set on straight lines.



November 29, 2016

I, Lawrence A. Feddersen, do hereby certify that on the 1 day of December 1977, I found (evidence) ~~no evidence~~ of the N $\frac{1}{4}$ corner of Section 33, T 18 N, R 1 E, Fourth Principal Meridian, and I re-established said corner according to the Wisconsin Statutes as shown and described hereon.

Dated this 1 day of DEC 1977.

Lawrence A. Feddersen

Registered Land Surveyor
Title

History of original corner establishment:

Fred Holden had set a stone at this corner, but it was not found. Previous Certified Survey Maps refer to an iron pipe at this corner.

Description of corner evidence found:

A 7/8" iron pipe was found at this corner which had been used in previous Certified Surveys. This pipe was accepted and replaced with a Harrison monument.

See Reverse Side For Maintenance

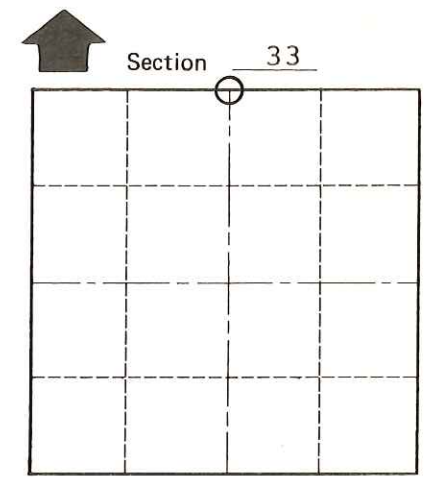
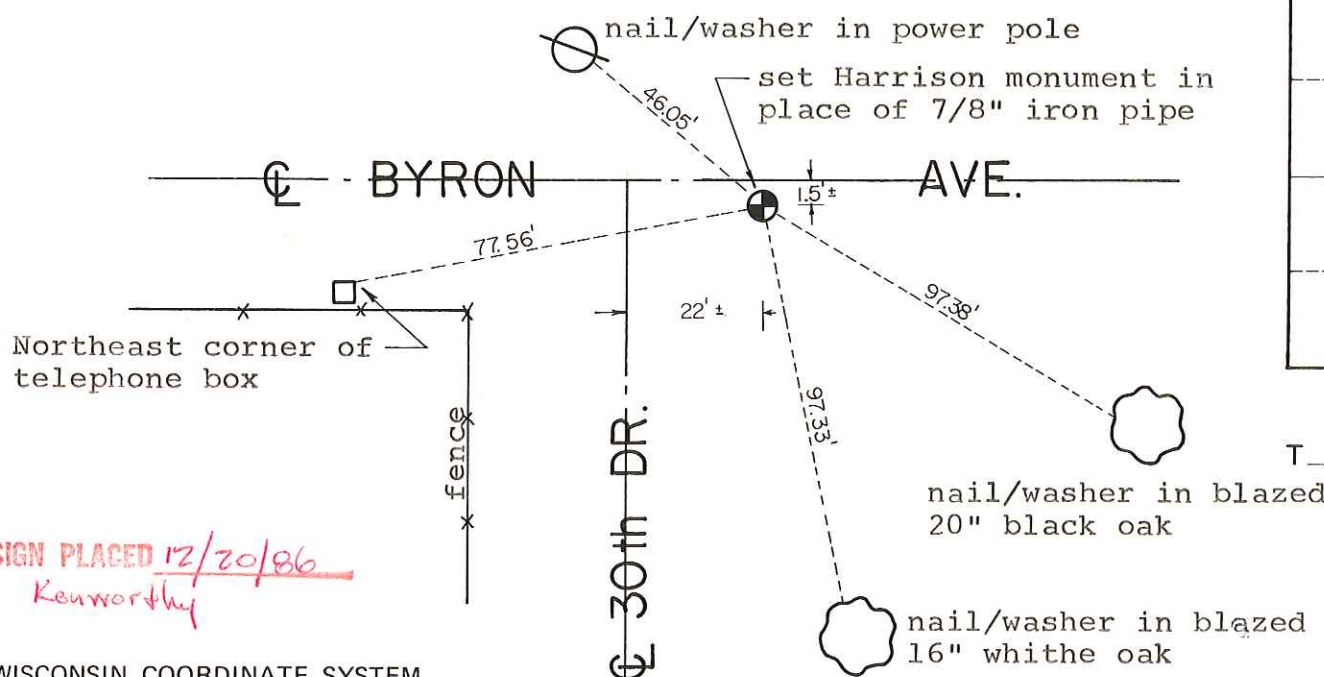
Description of corner and witness monuments, references and accessories used to perpetuate the original or re-established location of this corner:

Witnesses to corner location:

Lawrence Feddersen

Mark Heidecke

Douglas Malliet



T 18 N R 1 E
WISCONSIN

SURVEY CONTROL ORDER

Horizontal _____
Vertical _____

Corner	East (X)	North (Y)	Elevation (Z)	Zone
Control Sta. Name				

City, Village or Town of Byron
County of Monroe

COUNTY SURVEYOR FORM NO. 1