

U.S. LAND CORNER MAINTENANCE

Corner ID : E1/4 Sec. 27, T18N-R1E
41801272000

DATE	CREW	MONUMENT TYPE -----
August 27, 2013	Zachariah P. Dechant Gary L. Dechant	Existing Railroad spike over Harrison 2' east traveled centerline "PP"

Highway construction is currently taking place. Milling of the old pavement is to be part of the reconstruction.

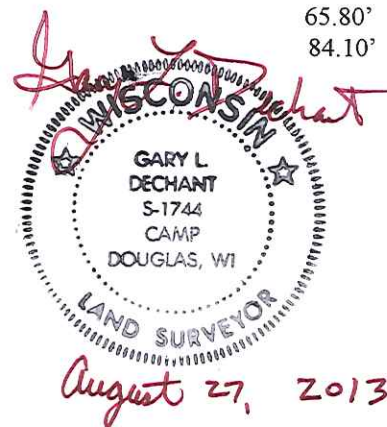
References:

Set 1/2"x24" iron pipe down 6" at intersection of cranberry dikes
 Set 1/2"x24" iron pipe down 6" at corner of cranberry dike
 Set 1/2"x24" iron pipe down 8" 44' east of centerline "PP"
 Set 1/2"x24" iron pipe, down 6", 3' west of north end of gate of driveway

Bearing
 N10W
 N61W
 N41E
 S41W

Distance
 193.38'
 53.45'
 65.80'
 84.10'

Harrison and Iron pipes N41E and S41W are set on a straight line.



41801272000

I, Bryan H. Meyer, do hereby certify that on the 25th day of March 19 86, I found (evidence) ~~XXXXXXXXXX~~ of the West 1/4 corner of Section 26, T 18 N, R 1 E Fourth Principal Meridian, and I re-established said corner according to the Wisconsin Statutes as shown and described hereon.

Dated this 29th day of Dec. 1986.

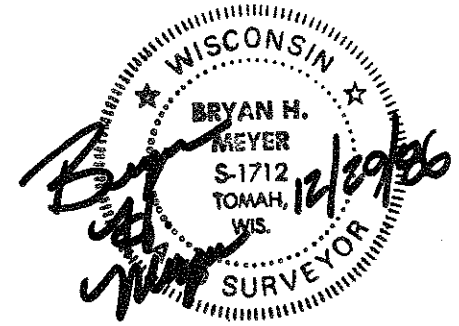
Bryan H. Meyer
Deputy County Surveyor

History of corner establishment since Original Government Survey

This corner was re-established by the County Surveyor's Office in May of 1982. (See page 1)

Description of corner evidence found:

George Baker (Monroe County Highway Commissioner) contacted the County Surveyors Office and informed us that he was planning to resurface C.T.H. "PP". During the fall of 1985, two additional ties were taken and the existing ties checked. Using the above mentioned ties, a railroad spike was set over the top of the Harrison.



COUNTY SURVEYOR FORM NO. 1

Description of corner and witness monuments, references and accessories used to perpetuate the original or re-established location of this corner:

Crew: Meyer, Wilhite
Date: March 25, 1986

Witnesses to corner location:

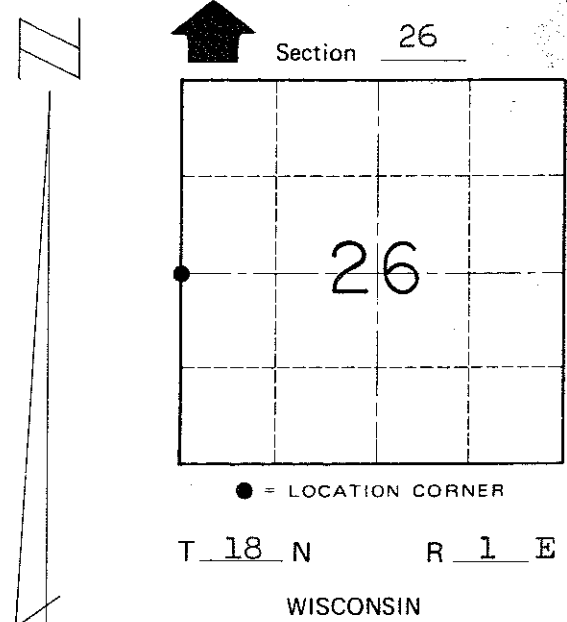
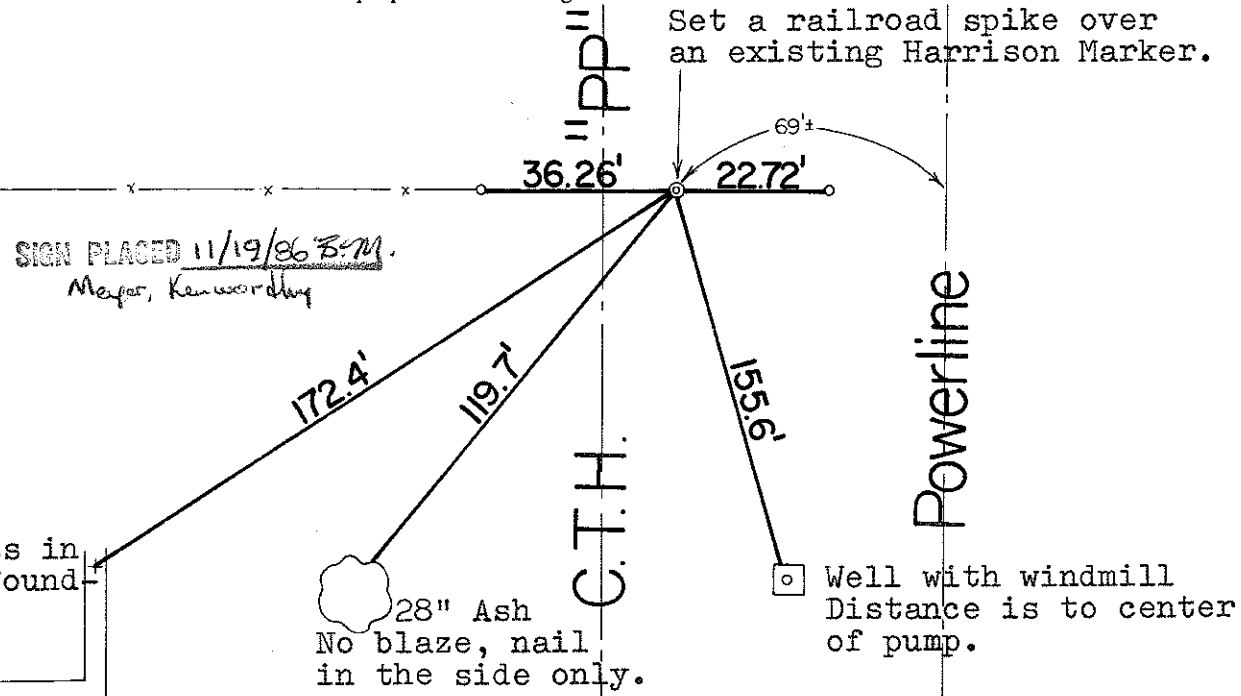
Dallas Wilhite

Bryan Meyer

Set a railroad spike over an existing Harrison Marker.

SIGN PLACED 11/19/86 B.M.
Meyer, Kenward Hwy

Chiselled cross in old building foundation.



SURVEY CONTROL ORDER

Horizontal	_____
Vertical	_____

WISCONSIN COORDINATE SYSTEM

Corner	East (X)	North (Y)	Elevation (Z)	Zone
Control Sta. Name				

o = Set 3/4"x24" iron bars

~~City/Village/Town~~ of Byron
County of Monroe

I, Harley A. Sime, do hereby certify that on the twentieth day of May 19 82, I found (No. evidence) ~~no evidence~~ of the West 1/4 corner of Section 26, T 18 N, R 1 E Fourth Principal Meridian, and I re-established said corner according to the Wisconsin Statutes as shown and described hereon.

History of corner establishment since Original Government Survey
 No known history since the Original Government Survey.

Description of corner evidence found:

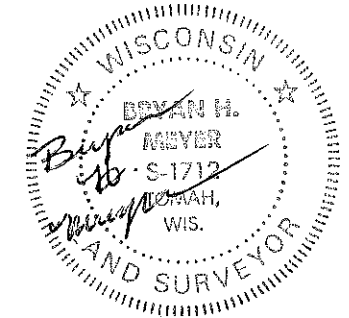
Set corner on line and equidistant between the Northwest and Southwest corners of Section 26. This point fits the fence to the West very well.

Dated this 27th day of May 19 82.

Harley A. Sime - R. L. S. 355

County Surveyor, Monroe County

Approved: **HARLEY A. SIME**
MONROE CO. SURVEYOR



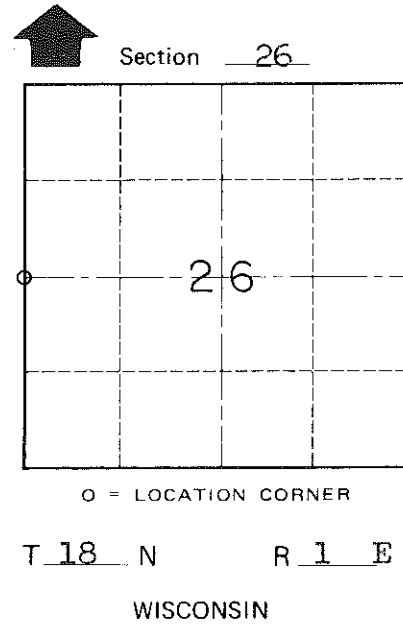
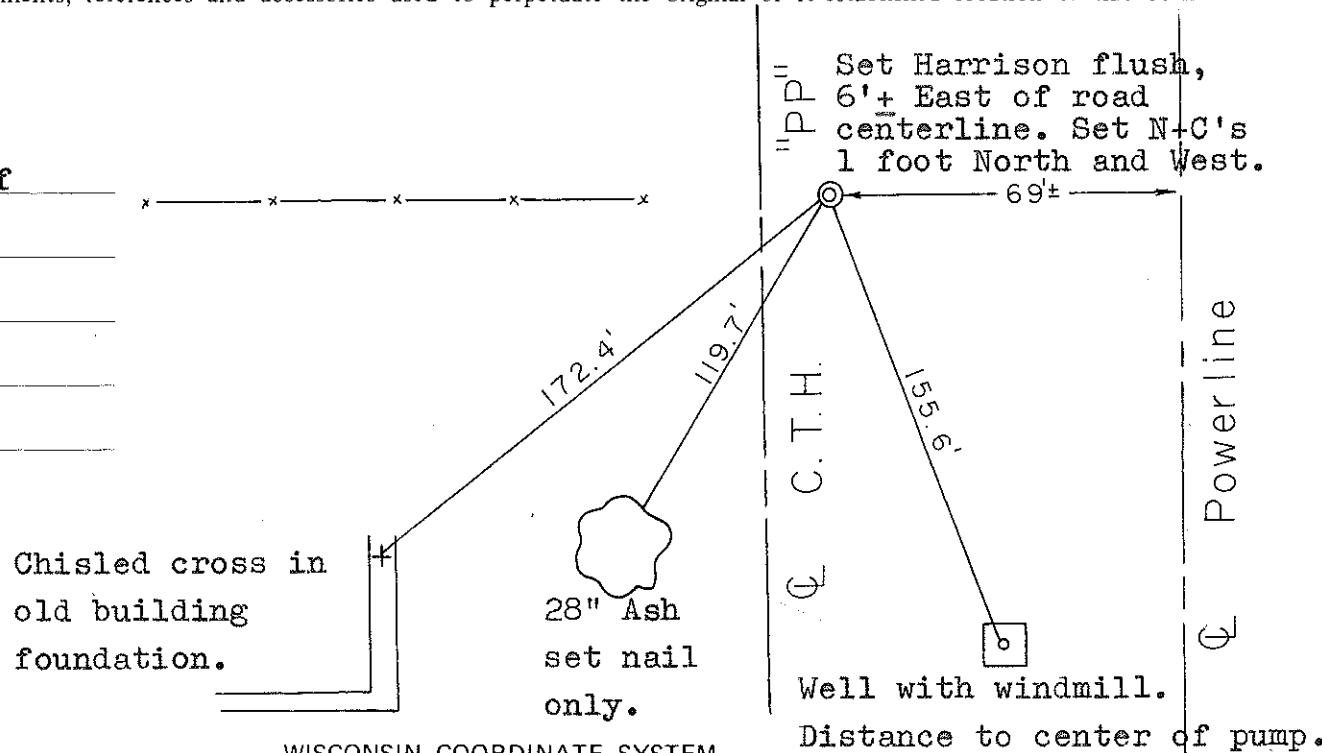
COUNTY SURVEYOR FORM NO. 1

Description of corner and witness monuments, references and accessories used to perpetuate the original or re-established location of this corner:

Witnesses to corner location:

Bryan Meyer - Crew Chief

Gary Dechant



SURVEY CONTROL ORDER

Horizontal	_____
Vertical	_____

WISCONSIN COORDINATE SYSTEM

Corner	East (X)	North (Y)	Elevation (Z)	Zone
Control Sta. Name				

~~City, Village or~~ Town of Byron

County of Monroe